



Varndean  
College Brighton & Hove

**TRANSFORMING LIVES**  
**THROUGH EXCEPTIONAL EDUCATION**

A photograph of four students walking outdoors on a school campus. From left to right: a young woman with long dark hair wearing a brown leather jacket and light-colored pants; a young woman with long dark hair wearing a white cable-knit cardigan over a dark top; a young man with short dark hair wearing a black puffer vest over a yellow long-sleeved shirt and olive green pants; and a young woman with long blonde hair wearing a black leather jacket over a dark top and blue jeans. They are all smiling and looking towards the right.

# CONTENTS

WELCOME FROM THE PRINCIPAL	4
OUR ACADEMIC EXCELLENCE	5
INTERNATIONAL STUDENTS	7
COURSE LEVELS EXPLAINED	8
ENTRY REQUIREMENTS	9
CHOOSING YOUR STUDY PROGRAMME	10
YOUR TIMETABLE	11
THE APPLICATION PROCESS	12
STRETCH & CHALLENGE	14
STEM AT VARNDEAN	16
SUSTAINABILITY AT VARNDEAN	17
<b>COURSES</b>	
ADVANCED (LEVEL 3) COURSES	18
PRE-ADVANCED (LEVEL 2) COURSES	88
GCSE COURSES	90
OTHER COURSES	92
ENRICHMENT AT VARNDEAN	95
STUDENT UNION	97
STUDENT SUPPORT & WELLBEING	100
FINANCIAL MATTERS & WELFARE	101
CAREERS & PROGRESSION	102
WHERE ARE THEY NOW?	104
GETTING TO VARNDEAN	106
A-Z COURSES INDEX	109



# COME ALONG AND MEET US AT ONE OF OUR OPEN EVENTS

**OPEN DAY**  
SATURDAY 30  
SEPTEMBER 2023  
11AM - 2PM

**OPEN EVENINGS**  
WEDNESDAY 1 &  
THURSDAY 2  
NOVEMBER 2023  
5PM - 8PM

**INTERNATIONAL  
BACCALAUREATE  
PRESENTATION**  
TUESDAY 10  
OCTOBER 2023  
DOORS 6PM,  
TALK 6.30PM - 7.45PM

## VISIT US TO:

- find out more about our excellent academic track record and the outstanding student support we provide
- find out more about the extensive range of courses we offer
- talk to staff and current students about what it is like to study at Varndean
- find out more about college life and becoming part of the 'Varndean community'
- look around our beautiful and unique campus

**FOR FURTHER DETAILS, GO TO  
[WWW.VARNDEAN.AC.UK/EVENTS](http://WWW.VARNDEAN.AC.UK/EVENTS)**

WE  
CURRENTLY  
OFFER

**34**

A LEVELS

**22**

LEVEL 3  
VOCATIONAL  
COURSES

**12**

LEVEL 2  
COURSES



**89**

INTERNATIONAL  
STUDENTS DUE TO  
START IN SEPT 2023



FROM THE  
PRINCIPAL,  
DONNA-MARIE  
JANSON



“WE INSPIRE ACADEMIC  
EXCELLENCE, HIGH  
EXPECTATIONS AND A  
THIRST FOR KNOWLEDGE,  
DEVELOPING A CURIOSITY  
AND PASSION FOR  
LIFELONG LEARNING

# WELCOME TO VARNDEAN

WELCOME

"I am delighted to welcome you to Varndean College, a community where students become academically accomplished and flourish as a part of a welcoming, inspirational and close-knit family. We inspire academic excellence, high expectations and a thirst for knowledge, developing a curiosity and passion for lifelong learning.

Varndean College is a wonderful place to study and to work in, it is a college with a difference. Unique in that we are set on a lovely spacious green campus with stunning views of Brighton and the sea, offering over 30 traditional A Levels, a wide range of vocational courses, a small but significant number of GCSEs, as well as the popular and internationally recognised International Baccalaureate Diploma.

Varndean is truly exceptional; we have an outstanding academic track record, as well as a real community ethos where students thrive and where we put student happiness at the heart of everything we do. We have a dynamic culture which engages staff and students, celebrates achievement, encourages innovation, and strives for continual improvement. Each and every student is valued as an individual and those who visit the College comment on how they are overwhelmed by the warmth, energy and atmosphere which makes Varndean so special.

We are proud of our impressive environment where our students experience a stimulating and enriching education characterised by academic excellence, outstanding teaching, learning and support, as well as extensive opportunities for personal development and growth. Our aim here at Varndean College is to develop our students into well-rounded, confident and free-thinking individuals, who are excited and ready to move on to the next stage of their lives. This is demonstrated in our excellent record of results and our ALPS value added score which places us in the top 10% of 16-19 providers in England.

Students say that one of the greatest things about studying at Varndean College is that you feel part of a community. Students and staff communicate on a first-name basis, everyone is treated like an adult and we provide an excellent transition between school and university or employment. Students tell us they choose to study here because of the welcoming, supportive atmosphere, as well as of course our academic distinction and the ability to bring out the best in everyone. Our staff are passionate about the subjects they teach, dedicated to ensuring students reach their full potential and help them every step of the way; whether it be on to university, further training or employment. We are tireless in our belief that

a happy student is a successful student and in ensuring that all students make excellent progress here.

Over recent years, it has been our desire to improve and expand upon the facilities we offer to students and this can be seen in our latest development, the wonderful new STEM Centre created to inspire our next generation of engineers, mathematicians and scientists. We have recently been awarded a substantial sum of funding to develop our quads, extend our social space for students, as well as create additional classrooms and office space. Planning permission has also been approved for a seven-year masterplan to enhance the campus, including new high quality teaching space, a new entrance building, student café and communal space, as well as a new sports hall.

I know that the students who come to Varndean are happy; and happy students make successful students. Wherever you choose to go, it is important to select somewhere that feels right for you. I would encourage you to come along to our College Open Events to meet our subject tutors and current students to hear first-hand about just how inspiring it is to study here. I hope that in doing so you will feel that Varndean College is the place for you and we will have the opportunity to welcome you here next September.



DISCOVER WHAT OUR PAST  
AND PRESENT STUDENTS  
SAY ABOUT VARNDEAN

# YOUR FUTURE STARTS HERE

**“At Varndean, academic achievement is valued and recognised, but so is personal growth and achievement. Varndean stood out because the teachers and staff are so passionate about what they teach and ensure the best for their students.”**

Grace Backshall, formerly of Chailey School

**“Varndean College is able to acknowledge what a short time we have here and makes it the most fulfilling experience it can be.”**

Pheobe Cheshire, formerly of Varndean School

**“VARNDEAN HELPED ME BY ENCOURAGING INDEPENDENCE AND TAKING RESPONSIBILITY FOR MY LEARNING WHICH IS VITAL FOR UNIVERSITY.”**

Charlotte Leppard-Padula, Veterinary Medicine, University of Surrey

**“I enjoyed the passion the teachers have for their subjects. They also really care about your wellbeing and are always approachable.”**

Tim Hawksley, formerly of Holy Trinity School

**“I REALLY LOVE THE DIVERSITY THAT VARNDEAN OFFERS.”**

Tegan Schafer, formerly of King’s School

**“Varndean encouraged me to come out of my comfort zone and try new things. Because of this I am forever grateful to them for igniting this spark and allowing me to embark on journey I never knew I would love so much.”**

Samantha Mazreku, LLB University of Sussex

**“I chose Varndean as the grade results were really good and I knew individuals who had been there who did exceptionally well.”**

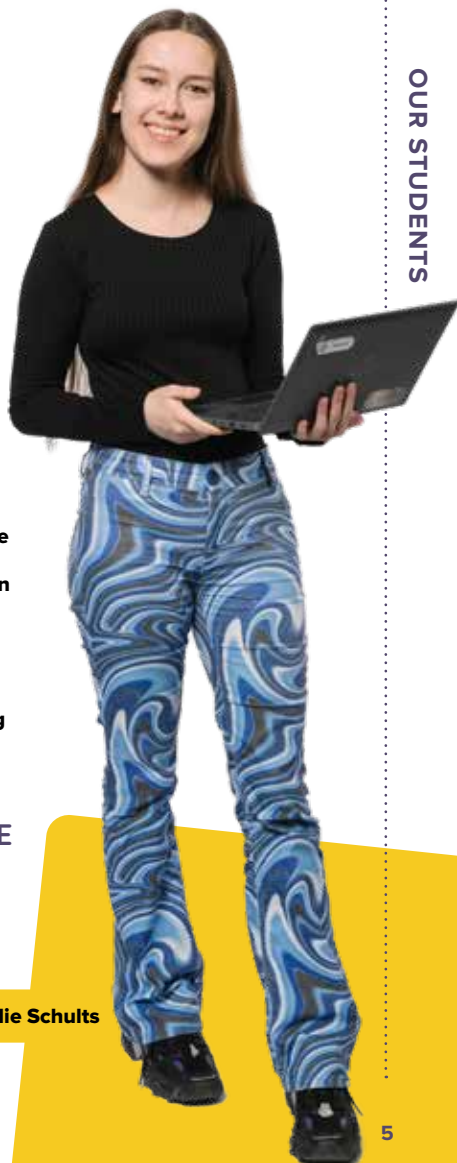
Olivia Muca, formerly of Blatchington Mill School

**“Varndean has an encouraging and ambitious atmosphere.”**

Darcy Fowler, formerly of Chailey School

**“TRULY THE BEST THE EDUCATION SYSTEM HAS TO OFFER.”**

Sebastian Le Huec, Literature & Creative Writing, University of Chichester



**Amelie Schults**

OUR STUDENTS



IN THE TOP  
**10%**  
OF UK  
PROVIDERS FOR  
VALUE-ADDED

## VALUE ADDED

Varndean College is proud of the fact that students who study here perform significantly better than would be expected of them based on the GCSE results they arrive with.

In the DofE's '16-19 Schools and Colleges Performance Table for Value Added', Varndean College is in the top 10% of UK schools and sixth form colleges.

'Value Added' scores are Government calculations which provide a measure as to how much more or less successful students have been, by declaring how much 'value' has been added to their results. We add outstanding value to the students who study here.

## OUR STUDENTS

**"YOU GET A FIRST-CLASS EDUCATION AND I DON'T THINK I WOULD BE WHERE I AM TODAY WITHOUT THE HELP AND SUPPORT FROM VARNDEAN."**

Megan Williamson, Psychology with counselling and psychotherapy, Manchester Metropolitan University

**"I knew that Varndean would be my choice from my first visit in Year 10 and I can honestly say I made the right decision. The support I received was invaluable, especially with my application to a very competitive degree. The staff genuinely want you to do well. I loved my time at Varndean and I must say, being at 'vet school' now is a little surreal. Without the support of my tutors, I would not be where I am today and for this, I will always be grateful."**

Jessica Duke, Veterinary Medicine, University of Surrey

**"Varndean is an extremely special memory for me, a place where I was able to grow as an individual."** Nadeen Alay, Biomedical Science, University of Brighton

**"Varndean always made me feel accepted and part of a community. I truly believe that my time at Varndean has been the best of my school life."** Jack

Pattison, Product & Furniture Design, University of Plymouth

**"Varndean College was a great experience including a trip to New York for Geography and performing at the amazing Brighton Fringe Festival for my Performing Arts final. This was a once in a lifetime opportunity and I highly recommend taking this course."**

Chantelle Denner, Employment as a School Special Needs Assistant

**"I ATTRIBUTE A LOT OF MY SUCCESS TO THE COLLEGE AND MY TEACHERS DURING MY TIME AT VARNDEAN."**

Fiji Sapara, Law, University of Surrey



Konstantinos Mytafidis



## INTERNATIONAL STUDENTS

### STUDENT PROFILE AVA KENNEDY

INTERNATIONAL

**Vardean College has a thriving International Department and welcomes students from across the world. We currently have students from twenty-four countries across four continents. They join us for short study courses and also for the full two-year A level or International Baccalaureate courses.**

#### **Eight great reasons to study with us as an international student:**

1. Our international students love it here! Consistent feedback is that the college is friendly, cares for you as an individual, is challenging and 'just great'!
2. Our international A-level students as a group achieved outstanding results, with 76% achieving A\*-C grades, and an overall pass rate of 94%. They were all successful in their university offers and several went to Russell Group universities to study a range of subjects, such as Law at Leeds, Film Studies in Manchester, Psychology and Neuroscience at Sussex and International Business at Bristol.
3. You can study with us for shorter periods of one term or one year as a study abroad experience, or you can study with us for the full two-year A-level or IB course, as a preparation for university. There are over fifty subjects to choose from.
4. You will receive specialist Academic English IELTS lessons and take an IELTS test at the end of the course. Even if you are an able speaker, we aim to help you achieve the highest score you can, which often helps with university entrance later on.
5. You work alongside UK students and are fully included in all activities in the college. The ratio of UK to International students is very high, so you will be studying with English speaking UK students.
6. Our campus is beautiful, set within acres of green fields, with views of the sea and the vibrant city of Brighton on the sunny south coast. We are also on the edge of the beautiful South Downs, an area of outstanding beauty.
7. You will live with a UK host family, and so have the opportunity to practise your English and learn about the UK culture.
8. You have a dedicated International Team who are available for all year round help, support and advice. Students say this helps them feel settled and welcome from the very beginning. The team also organise an exciting orientation programme, including induction to the college, and day trips out to Brighton, London, Oxford University and the Harry Potter Film studios; helping you make new friends and also see famous sites.

**"I chose Vardean because of its location in Brighton and how welcoming and academically focused it is. When I was first looking to study abroad, I meticulously looked through every college and city I possibly wanted to study in, and Vardean stood out the most because of its values and plethora of courses available.**

**Being at Vardean has given me the opportunities and skills to prepare for and apply to university, where I have received offers from all five of the universities to which I applied. I have also met people here that I consider friends for life, and never would've met them had I not come here.**

**Vardean College has allowed me to grow in my education, take control of my studies and I will be forever grateful for the two years I've spent here."**

To apply or for further information, please contact the international team at [international@vardean.ac.uk](mailto:international@vardean.ac.uk) or look at our website [www.vardean.ac.uk/international](http://www.vardean.ac.uk/international)



## COURSE LEVELS EXPLAINED

COURSE LEVELS EXPLAINED

### LEVEL 2 (PRE-ADVANCED)

A full-time one-year programme, which is equivalent to at least 3 or 4 GCSEs and which can be made up of GCSEs and/or vocational courses.

**This could be...**

**GCSEs**

**BTEC First Award**

**NCFE CACHE Certificate**

### LEVEL 3 (ADVANCED)

A full-time two-year programme which is equivalent to at least 3 A Levels and which can be made up of a combination of Level 3 courses. Please see Choosing Your Study Programme on page 10 for more details.

**This could be...**

**A Levels**

**International Baccalaureate Diploma**      Equivalent to 3 A Levels

**Vocational Courses**

**BTEC National Certificate\***      Equivalent to ½ A Level

**BTEC National Extended Certificate**      Equivalent to 1 A Level (known as the 'Single')

**BTEC Sub Diploma**      Equivalent to 1 A Level (known as the 'Single')

**BTEC Foundation Diploma**      Equivalent to 1.5 A Levels

**BTEC National Diploma**      Equivalent to 2 A Levels (known as the 'Double')

**T Levels**      Equivalent to 3 A Levels

\* Usually only available in your second year of study

All students are expected to be full-time and on an appropriate study programme of at least 16 hours per week

In addition to your course study time, your programme will consist of:-

- **Weekly Tutorial** (compulsory for all students) which monitors your progress throughout college and your progression on to the next stage of your career. Your weekly tutorial will be 90 minutes
- **Planned Study** your teachers will set you 4 hours of work per subject to complete in your study periods. You will have some time on your timetable to support you making a start on that during the college day.
- **Additional Learning Support** (if needed)
- **Careers, university or further education** advice and guidance
- Participation in our **Aspire Programme** for those progressing to competitive courses at **Oxbridge and Russell Group universities, or degrees in Medicine, Veterinary Science and Dentistry** (see pages 14-15)
- **Participation in Enrichment Activities** (compulsory for all Year 1 students), such as clubs, societies, visits, work experience and work-related activities. (see pages 95-9)





## ENTRY REQUIREMENTS



### LEVEL 2 (PRE-ADVANCED)

#### Entry Requirements

**At least 5 GCSEs at Grade 3, including English.**

**At least one GCSE should be at Grade 4 or above.**

English and Maths are compulsory and will be included in your programme if a Grade 4 has not already been achieved at GCSE. This may be a GCSE or, if less than a Grade 3 has already been achieved, a stepping-stone qualification or an ESOL qualification.

### LEVEL 3 (ADVANCED)

#### Entry Requirements

**IB Diploma or 4 A Levels**

A mixture of at least 7 GCSEs at Grades 9 - 6 including English, Maths and Science.

**3 A Levels**

A mixture of at least 6 GCSEs at Grades 9 - 4 including English.

**Level 3 vocational courses**

A mixture of at least 5 GCSEs at Grades 9 - 4 including English.

Some subjects have their own additional specific entry requirements. See the relevant course page for details. Where GCSE Maths or English at Grade 4 has not already been achieved, this will be included in your programme. This may be a GCSE or, if less than a Grade 3 has already been achieved, a stepping-stone qualification or an ESOL qualification.

#### **NB for Science A Levels**

For A Level Chemistry, it is expected that students choose 2 Science subjects, ie + Physics or Forensic Science or Engineering or Maths or Computer Science.

For A Level Biology, it is expected that students choose 2 Science subjects, ie + Chemistry, Physics or Forensic Science, or Maths or Psychology or Sport Science or Geography or Environmental Sustainability.

For A Level Physics, it is expected that students choose 2 Science subjects, ie + Chemistry or Engineering or Maths or Computer Science.



**Niousha Faramarzi**

ENTRY REQUIREMENTS



## CHOOSING YOUR STUDY PROGRAMME

CHOOSING YOUR STUDY PROGRAMME

This prospectus is aimed at helping you to decide which combination of subjects you would like to study at college. However, we fully recommend that you visit us at one of our Open Events during the Autumn term to see for yourself the diverse range of subjects on offer at Varndean, what each course entails, talk to the subject tutors, as well as get to meet our current students.

There are a number of factors you need to consider when choosing your courses and at Varndean College you will be helped in making these choices throughout the entire application process.

- What are the entry requirements? Will the GCSEs I'm taking allow me to take the courses I have chosen?
- What do I enjoy? What am I good at?
- Do I prefer coursework or exams?
- Do I know what career I would like to pursue? If so, do I require any specific A Levels for entry onto a university degree? You can research the entry requirements for university at [www.ucas.com/undergraduate](http://www.ucas.com/undergraduate)
- Do I want a course that will lead to an apprenticeship or straight into employment?

Please do not worry if you do not know at this stage which career path you wish to pursue. A large percentage of students who come to study with us do not know at the outset what they wish to do following college. They find their niche once they have started their studies here.

### Level 3 Advanced Programme

Students studying a Level 3 Advanced programme may choose to study a combination of subjects; for example, 3 A Levels, 3 Advanced vocational courses or you can combine a vocational course(s) with A Levels. The following are some examples of different Study Programmes:

SUBJECT 1	SUBJECT 2	SUBJECT 3
<b>International Baccalaureate Diploma</b>		
A Level	A Level	A Level
A Level	A Level	1 Single BTEC
A Level	1 Single BTEC	1 Single BTEC
A Level	1 Double BTEC	
1 Single BTEC	1 Single BTEC	1 Single BTEC
1 Single BTEC	1 Double BTEC	
	1 T Level	

### Level 2 Pre-Advanced Programme

For those students who do not meet the entry requirements of a Level 3 Advanced programme, we can offer a one-year Level 2 Pre-Advanced programme instead. This can comprise of a mix of GCSEs and Level 2 vocational courses.

## TIPS FROM SOME PAST STUDENTS

**“I was drawn to the breadth, complexity and international nature of the IB. I had always felt torn between Humanities and Sciences, and knew I didn’t want to give up subjects like History. The IB allowed me to continue with all these subjects.”**

Anna Zhang, IB student, 2021-23

**“Pick subjects you like. Studying is so much more enjoyable when you are truly interested in what you are learning about.”**

Esme Mason; Sociology, European Studies at University of Amsterdam

**“Make the most out of the two years you’re here – I cannot stress that enough! Make connections, talk to people around you, go out of your comfort zone, explore and try out new things – you’re at a great point in your youth.”**

Daniel Duffill; Biomedical Engineering, Imperial College London

**“I continued with subjects at college that I was passionate about in secondary school. After coming to a taster day, it reaffirmed that they were the correct choices.”**

Maya Seth; Design, Goldsmiths University London

**“I would recommend picking subjects that complement one another. More importantly, though, pursue what you really enjoy and find interesting.”**

Leo Rogers; PPE, University of Oxford

**“Studying the IB was one of the best choices I’ve made. It is quite a demanding programme but the teachers were excellent and so enthusiastic. I am constantly drawing on the things that I learnt, even after leaving university.”**

Caroline Banerjee; English, University of Cambridge

## YOUR TIMETABLE



The college day runs from 8.40am - 4.10pm.

In addition, there are a small number of courses which take place between 4.20pm - 5.05pm on Mondays and Wednesdays. Each student has their own individual timetable and does not attend lessons in all sessions. The following examples give an idea of what two different timetables might look like.

Your only obligation is to be in college for timetabled lessons, weekly tutorial (90 mins), planned study time (90 mins) and enrichment (compulsory for Year 1 only). During non-contact time, students may choose to study off-site, but many students find it more productive to spend their non-contact periods in college, using this time for independent study in our library, open IT suite, or one of our outdoor quads in the summer. The college offers free Wi-Fi and students can bring in their own laptops or tablets.

### YEAR ONE STUDENT STUDYING 3 A LEVELS

	MONDAY	TUESDAY	WEDNESDAY	THURSDAY	FRIDAY
08.40 - 9.25	PSYCHOLOGY		BUSINESS STUDIES	TUTORIAL	
09.25 - 10.10	PSYCHOLOGY		BUSINESS STUDIES	TUTORIAL	
BREAK					
10.30 - 11.15	BUSINESS STUDIES			ECONOMICS	
11.15 - 12.00	BUSINESS STUDIES			ECONOMICS	
MOVEMENT TIME					
12.05 - 12.50	LUNCH	LUNCH	PLANNED STUDY	LUNCH	LUNCH
12.50 - 13.35		ECONOMICS	PLANNED STUDY	PSYCHOLOGY	
13.35 - 14.20		ECONOMICS		PSYCHOLOGY	
BREAK			LUNCH	BREAK	
14.40 - 15.25		PSYCHOLOGY	ENRICHMENT	BUSINESS STUDIES	ECONOMICS
15.25 - 16.10		PSYCHOLOGY		BUSINESS STUDIES	ECONOMICS
BREAK					
16.20 - 17.05					

### YEAR ONE STUDENT STUDYING A COMBINATION OF 2 A LEVELS & A VOCATIONAL COURSE

	MONDAY	TUESDAY	WEDNESDAY	THURSDAY	FRIDAY
08.40 - 9.25		3D DESIGN		ENGINEERING	PHYSICS
09.25 - 10.10		3D DESIGN		ENGINEERING	PHYSICS
BREAK					
10.30 - 11.15		ENGINEERING	PHYSICS	PLANNED STUDY	3D DESIGN
11.15 - 12.00		ENGINEERING	PHYSICS	PLANNED STUDY	3D DESIGN
MOVEMENT TIME					
12.05 - 12.50	LUNCH	LUNCH	3D DESIGN	LUNCH	LUNCH
12.50 - 13.35	PHYSICS		3D DESIGN		ENGINEERING
13.35 - 14.20	PHYSICS				ENGINEERING
BREAK			LUNCH	BREAK	
14.40 - 15.25	TUTORIAL		ENRICHMENT		
15.25 - 16.10	TUTORIAL				
BREAK					
16.20 - 17.05					

NB This timetable structure may be subject to change



## A GUIDE TO THE APPLICATION PROCESS

### A GUIDE TO THE APPLICATION PROCESS

Varndean College, BHASVIC and Brighton MET together form the Accord Colleges in Brighton and Hove. The three colleges have a coordinated application process for students seeking to study at any of the Accord Colleges. Under the Accord, you will not be able to make an application to both Varndean College and BHASVIC. This is so that these two sixth form colleges can effectively plan curriculum provision to cater for as many students wishing to study in one of these colleges as possible. You are, however, welcome to make an application to one of these two colleges plus Brighton MET. You are also entirely free to apply to any other educational institution – it is only in the case of Varndean College and BHASVIC that you are not able to apply to both. An Accord College is likely to ask you, at interview, about any other applications you have made or offers you hold from other educational institutions, employer or training provider.

#### VISIT

We always recommend that you visit as many further education providers as you can, in order to make a choice which is the best for you. Do come along and visit us at one of our Open Events, which take place on:

##### OPEN DAY

**Saturday 30 September 2023**  
11am – 2pm

##### OPEN EVENINGS

**Wednesday 1 November 2023**  
**Thursday 2 November 2023**  
5pm – 8pm

These give you the opportunity to look around our beautiful and unique campus, find out about our superb academic track record and the outstanding support we provide, meet our staff and students to talk about specific subjects, as well as attend any presentations taking place.

In addition, for those students wishing to find out more about the International Baccalaureate Diploma, there is an:

**INTERNATIONAL BACCALAUREATE PRESENTATION EVENING**  
**Tuesday 10 October 2023**  
6.30pm – 7.45pm

#### DECIDE

Having visited as many sixth form colleges as you can, choose the one which you believe is right for you.

- Consider which courses are available.
- Consider the size of the college and how many students attend.
- Did you like the 'feel' of the college at open days?
- Did you like the tutors when you met them at open days?
- Talk to current students about their experience at the college
- Consider the location and your daily journey.
- Look at the college's academic success.
- Consider any Additional Support you may require.
- Choose where you want to go, rather than where your friends are going.

#### APPLY

To apply to Varndean College, you will need to create an account and complete the online application form via our website [www.varndean.ac.uk](http://www.varndean.ac.uk). The priority deadline for applications is Friday 1 December 2023. We do accept applications after this, but priority is given to those received by this date.

STUDENTS CURRENTLY ATTENDING VARNDEAN COME FROM OVER

**51**

DIFFERENT SCHOOLS



**Attend an Open Day  
and/or Open Evening**

Open Day  
Sat 30 Sept 2023  
IB Eve  
Tues 10 Oct 2023  
Open Evenings  
Wed 1 & Thurs 2 Nov 2023

**Applications open**

Apply using the online application system on [www.varndean.ac.uk](http://www.varndean.ac.uk)

**Priority deadline:**  
Friday 1 Dec 2023

You will be invited to attend an **Admissions Interview**

SEPTEMBER - NOVEMBER 2023

LATE SEPTEMBER 2023

JANUARY - FEBRUARY 2024

## APPLICATION TIMELINE

SEPTEMBER 2024

Attend an **Induction Day** and begin your journey as a Varndean College student!

LATE AUGUST 2024

Following your GCSE results, you will be invited to attend an **Enrolment Interview**.

JUNE 2024

If you have accepted an offer of a place here, you will be invited to attend our **New Students' Day** in late June.

### ADMISSION INTERVIEW

You will be invited to attend an Admissions Interview, which is likely to be in late January or February. At the interview we will discuss your course choices with you, and providing we can offer you an appropriate course and you are supported by your school, you will be offered a conditional place based upon the entry criteria set out in our Admissions Policy. Please note that late in the application cycle, this may be a 'waiting list offer'.

### NEW STUDENTS' DAY

If you have accepted your place, you will be invited to attend our New Students' Day in late June. This is when you will experience some time with us as a sixth form student, meet subject tutors, and learn more about coming to Varndean College from September.

### ENROLMENT INTERVIEW

Following your GCSE results, you will be invited in for a second Enrolment Interview in late August. This is when we can discuss your results and finalise your course. Do not worry if you haven't met the requirements for a specific course, we will discuss this with you and help find an alternative course that suits you.



A GUIDE TO THE APPLICATION PROCESS

Fab Tarling

758

YEAR 1 STUDENTS

716

YEAR 2 STUDENTS



# STRETCH & CHALLENGE

STRETCH & CHALLENGE

**Vardean College provides an extensive range of support and opportunities for high-achieving students to enable them to make successful applications to the most competitive and prestigious universities. At their interview, students will have the opportunity to discuss the additional programmes and support available to them throughout their journey with us.**

## APPLYING FOR OXBRIDGE OR A RUSSELL GROUP UNIVERSITY, JOIN OUR 'ASPIRE PROGRAMME'

Vardean is an excellent choice for students aspiring to study at Oxford, Cambridge or a Russell Group university. We offer a structured programme supporting our most able students to progress to top universities. Our specialist team gives students bespoke one-to-one and group support, from the beginning of their Vardean journey through to their first day at university. Recent HESA (Higher Education Statistics Agency) statistics show that in 2022, 94.8% of our students studying at Russell Group universities graduated with a First or Upper Second-Class honours degree, higher than those students from the independent sector.

To ensure that students are in the very best position with your university application, we offer:

- Early identification during enrolment and Year One.
- Supporting super-curricular learning: encouraging you to take your subject knowledge above and beyond the exam syllabus by applying for summer schools, tasters and masterclasses, competitions and essay prizes.
- Individual support throughout the application process including writing your personal statement, preparing for pre-admissions assessments and getting ready for interview.
- Specialist tutors for Oxbridge and Medical/Veterinary Science/Dental applications.
- Information talks by the admissions teams from both Oxford, Cambridge and Brighton & Sussex Medical School.

## HERE ARE JUST SOME OF OUR PAST STUDENT SUCCESS

- Ushika Kidd (2020-2022)**  
Human Sciences, Oxford
- Alice Brooker (2020-2022)**  
History & English, Oxford
- Willem Jump (2020-2022)**  
Maths, Oxford
- Esme Hubert (2020-2022)**  
German & Linguistics, Oxford
- Bo-Min Ryu (2019-2021)**  
Classical Archaeology & Ancient History, Oxford
- Nell Breckenridge (2019-2021)**  
History & Politics, Cambridge
- Lillian Lafan (2019-2021)**  
Philosophy, Cambridge
- Seowon Jung (2019-2021)**  
Natural Sciences, Cambridge
- Jess Macrae (2018-2021)**  
Biology, Oxford
- Francesca Fairhead (2018-2020)**  
English, Cambridge
- Jo Goad (2017-2019)**  
Geography, Cambridge
- Kate Granlund (2017-2019)**  
English, Cambridge
- Leo Rogers (2016-2018)**  
Philosophy, Politics & Economics, Oxford
- Bruno Buckley (2016-2018)**  
History, Cambridge
- Portia Smith (2016-2018)**  
Medicine, Cambridge



Bo-Min Ryu

Alice Brooker



## APPLYING FOR MEDICINE, VETERINARY SCIENCE OR DENTISTRY (MED/VET/DENT)

The College runs a programme of activities and support for students interested in progressing in the highly competitive fields of medicine, veterinary science or dentistry. These include:

- Practice interviews with the admissions team from Brighton and Sussex Medical School.
- Talks from ex-Varndean medical, veterinary and dental students about their experience of the application process, life as an undergraduate and their career paths.
- Talks from external speakers on current medical, veterinary and dental issues.
- Participation at conferences and workshops.
- Support with arranging work experience/volunteering to add weight to any application and provide evidence of a genuine commitment.
- Support with writing personal statements for university applications.
- Advice on how to keep up to date with current medical/veterinary/dental ethics issues.
- Advice about extension activities to support your application and help prepare you for your interview; such as the EPQ and competitions including the Cambridge Chemistry Challenge, RSC's Chemistry Olympiad, RSC's Annual Analyst Competition and STEM Gold CREST Awards.

## HERE ARE JUST SOME OF THE STUDENTS WHO HAVE PROGRESSED ON TO STUDY MEDICINE, VETERINARY SCIENCE OR DENTISTRY

**Isobel Denslow (2020-2022)**  
Medicine, University of Belfast

**Katie O'Rourke (2019-2021)**  
Medicine, St George's, University of London

**Anthea Gabot (2019-2021)**  
Medicine, University College London

**Imogen Grosvenor (2019-2021)**  
Veterinary Medicine, University of Nottingham

**Fiyinfoluwa Oalipo (2018-2020)**  
Medicine, Imperial College London

**Anya-Niamh Tidey (2017-2019)**  
Medicine, St. George's, University of London. Anya also won 'UK Young Scientist of the Year' award in 2019

**Anya Rehman-Wood (2017-2019)**  
Medicine, University College London

**Louie Garnett (2017-2019),**  
Medicine, University of Leeds

**Jessica Duke (2016-2018)**  
Veterinary Medicine & Science, University of Surrey

**Sam Segal (2016-2018)** Medicine, University of Sheffield

**Portia Smith (2016-2018)**  
Medicine, University of Cambridge

**Labib Syed (2013-2015)** Medicine, Bartholomews & the London School of Medicine & Dentistry

**Natasha Wilcock (2013-2015)**  
Medicine, University College London

**David Cobbett (2012-2014)**  
Dentistry, University of Newcastle. In 2019 named as UK's top undergraduate dentist for clinical skills by Royal College of Surgeons of Edinburgh.

STRETCH & CHALLENGE

Isobel Denslow

Louie Garnett





# STEM AT VARNDEAN

INSPIRING THE NEXT GENERATION OF SCIENTISTS, TECHNOLOGISTS, ENGINEERS AND MATHEMATICIANS

STEM AT VARNDEAN

With the opening of its new £2.9m STEM Centre, Varndean College is at the forefront to offer those students wishing to pursue a career in the field of science, maths and engineering the finest opportunity of progressing on to the next stage of their careers.

The STEM Centre enables students and teaching staff to benefit from this expansive two-storey building, housing four huge impressive science labs, six teaching rooms, generously sized prep rooms, a

fabulous central foyer and atrium, as well as accessible facilities for students with disabilities.

Varndean College offers an extensive range of STEM subjects for students to follow; including traditional A Levels such as Biology, Chemistry, Physics, Computer Science, Maths and Further Maths, as well as vocational courses such as Applied Human Biology, Engineering, and Forensic Science and Criminal Investigation. The College has been awarded a Certificate for Outstanding Progress in A Level courses, including all STEM subjects.

Studying STEM subjects can enable students to follow degrees and careers which are much sought after owing to their high demand in commerce and industry. The challenging, rigorous academic framework, combined with the requisite technical and practical skills developed throughout the course, make them ideal choices for developing skills which keep pace with the advances being made in technology and science. Our students take part in a wide range of extra-curricular activities and competitions, with many students leaving each year to progress onto higher education courses in STEM.

## STEM AT VARNDEAN REASONS TO CHOOSE US

- A strong team take part in the RSC's annual Chemistry Olympiad each year and always finish with an impressive list of gold, silver and bronze awards.
- Chemistry students also take part in the RSC's Annual Analytical Competition, reaching the National Final in three out of the last six years, and in 2022 were runners up in the SE Regional Division.
- Year One Chemistry students undertake the Cambridge C3L6 Chemistry Challenge every June. In 2022, 17 students won an impressive array of awards; 2 gold, 11 silver and 4 copper, with one student only four marks off of being invited to the University of Cambridge
- Students have reached the finals in the University of Oxford's Practical Ethics and Responsibility competition, as well as the University of Reading's 'Heroines in Science' competition.
- All Chemistry students attend the annual Varndean College Chemistry Conference at the University of Brighton. Presentations range from talks on drugs to medical advances to energetics and the enigmatic 2nd Law of Thermodynamics.
- Last year, six Year One and Year Two Chemistry students achieved success in the University of Cambridge's annual Chemistry Race.
- A Year Two Biology student was awarded Silver in the Annual British Biology Olympiad, with only 10% of competitors receiving such an award.
- Year Two Biology students have won Gold CREST Awards and this year, one IB student won a STEM Smart Silver Award.
- Maths students take part in the "UK Senior Maths Challenge" each year.



# A LEADING COLLEGE FOR CLIMATE ACTION



Varndean College has committed itself to be a leading college for climate action, ensuring that we put the planet and environmental sustainability at the heart of all we do.

We are unique in that we have pledged our commitment to this nationally and are working collaboratively with all the other FE Colleges in Brighton and Hove to take co-ordinated action.

The Principals of each college commented "Climate change is without doubt the single biggest issue that our students consistently raise and care passionately about. There is now a moral imperative for every organisation to take steps to quickly and drastically address their own sustainability. As leaders of institutions that account for over 90% of places for educating 16-19 year olds in the city, we need to show our students that we are acting now, acting quickly and acting together".

We are one of the first colleges in the country to be part of a scheme offering the Carbon Literacy Qualification to all of our students. This is a short course of around 10 hours which students can take alongside their studies. See page 92 for further details.

In February 2021, Varndean College formed the Climate and Environment Action Group (CEAG) with its mission statement being:

To improve the environmental profile of the College by guiding us along the Climate Action Road Map, enhancing our campus environment and promoting awareness through learning and enrichment programmes.

## Here are just some of the actions CEAG has already undertaken:

- offering and delivering carbon-literacy training to all our learners following the successful implementation of a city-wide pilot scheme as part of our FE Sussex collaboration with other local colleges
- introduced a reuse and upcycling scheme as part of our continued commitment to sustainability
- we have planted over 400 trees on the campus and are actively involved in other biodiversity projects, some with our neighbouring colleges as part of our Surrenden Campus collaboration as part of our commitment to improve the College's environmental profile
- invited numerous industry specialists from the Green Skills Sector for events that coincide with the nationwide Green Careers Week and the Big Green Week to showcase career opportunities in sustainability
- we have banned all single use plastics in our canteen and have switched to a sustainable food supplier
- to research and raise awareness of the impact of climate change by embedding carbon literacy into our curriculum courses as part of our education for sustainable development

## We are also committed to other environmental and sustainability priorities including:

- the implementation of a plan for upskilling on measuring emissions and carbon footprint for the college

- the implementation of strategies to reduce energy use and setting targets for achieving net zero by 2030

- a plan to reduce waste on campus by 50-75%

We are blessed with a beautiful campus and have invested in the bio-diversity of the college grounds for a number of years. Developing and planting an area of bio-diversity means we have some rare and important species unique to our site and you will have the opportunity to not only enjoy the various bio-diversity areas, but to also contribute to these and be part of their maintenance.

In 2019 we also partnered with Brighton & Hove Energy Services Cooperative and installed 180 solar roof panels which generate 51,660 kwh of electricity annually. This significantly reduces the College's environmental footprint. Over a 20-year lifetime these panels will reduce carbon emissions by 271 tonnes – that's the equivalent of planting 4,481 trees!

Carbon Literate Organisation  
Bronze



2022/23  
BEACON AWARDEE  
WINNER

In September 2022, Varndean College was officially awarded the Bronze status as a carbon literate organisation by the Carbon Literacy Project which also oversees the accreditation of the Carbon Literacy Qualification (see page 92).



# 3D DESIGN



**Looking at the world in a questioning and inquisitive way and then responding to it through recording, model making, material experiments and final three-dimensional outcomes is the basis of the 3D Design course.**

You produce practical work in both product design and architectural design in the first year and then specialise by the second year. There is a written 1000 –3000 word study which is completed at the start of the second year.

Ideas are further developed and refined through looking at the work of other designers and architects. This can happen through study visits to museums and galleries, as well as through liaison with local companies on specific projects. For the last 5 years our architecture briefs have been set by an Architect from 'RH partnership in Brighton' and all briefs have a 'real' context within which to work.

It is a creative rather than technology-based course and students must be willing to explore a wide variety of approaches to recording their ideas ranging from computer aided design to observational drawing. There is an emphasis upon developing sophisticated concepts through material experimentation and model making. Design tutors at Varndean are all practising artists/designers.

## YEAR 1

- Product design – ie lighting, jewellery, vessels, flat pack furniture, display
- Architecture – ie outdoor pavilions, bridges, skyscrapers, temporary structures
- Model making – using a wide range of materials
- Material and process experiments – using all the workshop machinery
- Critical research – analysing and getting inspiration from designers' work
- Diverse recording skills and methods – a wide variety of approaches

## YEAR 2

- Adding depth to your knowledge, understanding and skills
- A written critical and contextual study
- Individually negotiated product or architecture project
- Ambitious final pieces of practical work
- A 15-hour practical exam following from a period of development

"I studied 3D Design because I wanted to study architecture. I wanted to learn how to create and build models, but also how to consider the building environment. I've really enjoyed the independence given to me, the ability to experiment and explore with different techniques and materials." **Bonnie Irvine, studying Architecture at University College London**

## COURSE ESSENTIALS

### COURSE AVAILABLE

A Level

### ENTRY REQUIREMENTS

Standard advanced entry requirements

#### Plus

Grade 5 in GCSE Art or Design Technology (resistant materials, product design, graphic products)

#### Or

Merit or above in BTEC Level 2 First Diploma

#### Or

If GCSE Art or Design Technology have not been taken, suitably qualified students with a good portfolio of work will be considered.

### HOW THE COURSE IS ASSESSED

60% coursework, 40% exam

### OTHER INFORMATION

Regular visits are made to design museums and exhibitions in London and the South East.

# ART



Coursework projects allow you to explore your ideas in real depth. You will learn new skills, experiment with materials, develop creatively and investigate the work of other artists in well-equipped specialist studios guided by experienced and supportive tutors who are also practising artists. Students work within broad topics to find their own areas of interest and are encouraged to be inquisitive and passionate.

As you develop, individual subjects of study are negotiated between student and tutor. In the second half of Year Two, an externally set assignment allows you to demonstrate your ability to record observations, respond to the work of other artists, develop ideas and produce your own work at a high level.

## YEAR 1

- Investigating a range of approaches to drawing
- Experimenting with a range of materials
- Learning from other artists
- Painting in oil or acrylics on a range of surfaces and sizes
- Printmaking and mixed media
- Life Drawing unit
- Visit to London Galleries

## YEAR 2

- Extending your drawing skills, including working from life
- In-depth practical and written critical research on a selected artist, movement or theme
- Individually negotiated practical projects
- Ambitious creative outcomes in two or three dimensions on a range of scales
- Show your work in an exhibition in Year 2

“I chose art because it’s what I truly love and what I would like to do as my future career. I’ve really enjoyed the freedom and the new skills the teachers have taught me. For the first time I got to do etching which I really enjoyed. I’ve learned so much from taking this course and it’s helped me grow in confidence too. The art room is absolutely amazing and inspires me when I’m working.”

**Sophie Hogton, Home Educated**

## COURSE ESSENTIALS

### COURSE AVAILABLE

A Level

### ENTRY REQUIREMENTS

Standard advanced entry requirements

#### Plus

Grade 5 in GCSE Art or Textiles

#### Or

Merit or above in BTEC Level 2 First Certificate in Art and Design

#### Or

If GCSE Art or Technology has not been taken, suitably qualified students with a good portfolio of work will be considered.

### HOW THE COURSE IS ASSESSED

60% coursework, 40% externally set assignment

### OTHER INFORMATION

You will have access to a wide range of processes, including drawing and painting in oils or acrylics on a range of scales. You can also work in three dimensions in a variety of construction materials.



# BIOLOGY



If you are fascinated by life and living processes and want to learn more about topics such as Genetics & DNA, Molecular Biology, Physiology and Ecology, then Biology is an obvious choice for you. It will help you to develop a much more detailed scientific knowledge and understanding of the subject.

As well as gaining a sound understanding of biological principles, you will become aware of advances in technology relevant to Biology and recognise the value and responsible use of Biology in society.

The AQA specification is an exciting way to learn Biology. It is taught in a way that enables you to put the biological principles and processes into context, making them seem more relevant. Biology is also a required, or at least desirable, subject for a large number of career pathways.

## TOPICS COVERED

- Biological molecules
- Cells
- Organisms exchange substances with their environment
- Genetic information, variation and relationships between organisms
- Energy transfers in and between organisms
- Organisms respond to changes in their internal and external environments
- Genetics, populations, evolution and ecosystems
- The control of gene expression

“I have learnt so many interesting things in Biology and feel that my problem-solving skills, my ability to remain calm under pressure and my communication skills have all improved due to taking this course. I truly recommend taking Biology at Varndean! Studying here has truly been the highlight of my education so far and I will always treasure my time spent here.” **Rhianon Potter, ex Longhill High School**



## COURSE ESSENTIALS

### COURSE AVAILABLE

A Level

### ENTRY REQUIREMENTS

Standard advanced entry requirements

#### Plus

Grade 6 in GCSE Biology and another Science GCSE

#### Or

2 x Grade 6 in GCSE Combined Science

#### Plus

Grade 5 in GCSE Maths

Note: Biology should be taken with a facilitating subject, these are Chemistry, Physics, Mathematics, Psychology, PE or Geography

### HOW THE COURSE IS ASSESSED

100% exam

### OTHER INFORMATION

Biology goes well with Chemistry and Maths and supports subjects such as PE and Psychology. Many of our students successfully mix Biology with Humanities, such as History, Foreign Languages and English. It should be taken with a facilitating subject.

# OUR STUDENTS

## REBECCA STANLEY

**STUDIED:**

Health & Social Care, Applied Biology, Geography

**PREVIOUS SCHOOL:**

Chailey School

**WHAT NEXT?**

Paramedic Science, Oxford Brookes University

"I chose Varndean College due to its superb location and diverse range of subjects. Through its enrichment programme, the college has broadened my horizons by introducing me to new activities such as Theatre Club, which I may not have had access to otherwise. I feel that choosing Varndean College has given me greater opportunities to explore my interests and pursue my academic goals.

In the future I am interested in working in healthcare and studying Health and Social Care has equipped me with the necessary knowledge and understanding of the laws and procedures that need to be upheld while working with a holistic approach for appropriate care among multi-agency and multi-disciplinary teams.

Applied Human Biology has provided me with a comprehensive understanding of the physical body, and I have particularly enjoyed learning about different illnesses and how they can be treated, as well as microorganisms and antibiotics.

I chose Geography because of my fascination with the physical aspects of the world, such as coasts and rivers.

As a member of the Theatre Club, I had the opportunity to explore stage management and learn about lighting and sound techniques. This has been beneficial to my passion for working behind-the-scenes in amateur theatre.

In my free time I volunteer for St John's Ambulance and contribute to the local community in many ways. I am humbled to have recently won an award for providing care to an elderly lady with a head injury whilst I was off duty. As a cadet I have now worked my way up through to the highest of ranks 'lead cadet'.

At Varndean, the tutors' passion for their respective subjects is contagious, making me more eager to learn and improve my education. I now wish to study paramedic science at university and wish to become a HART team member of an air ambulance paramedic in the future."

**"At Varndean, the tutors' passion for their respective subjects is contagious, making me more eager to learn and improve my education"**



# BIOLOGY

(APPLIED HUMAN BIOLOGY)



If you enjoyed Biology at school and want to increase your specialist knowledge and understanding in a practical context that closely tracks the science that professionals use in the workplace, then this is the course for you.

Applied Human Biology is a two-year course equivalent to one A Level, but the approach is different to A Level. There is a greater emphasis on practical work and work-related simulations and you will produce structured assignments as well as two external examinations.

#### TOPICS COVERED

- Biological Principles
- Microorganisms and Infectious Diseases
- Biomedical Science
- Genetics
- Health, Disease, Treatments and Therapies
- Physiology
- Research Skills

“Applied Human Biology has been my most enjoyable subject. Having the opportunity to learn about the incredible processes that take place within us is something I’d encourage everyone to take part in. The teachers really support you through all your coursework and exam preparation and the practicals are super interesting. I recommend this course to anyone.”

**Abigail Moore, ex Longhill High School**



#### COURSE ESSENTIALS

#### COURSE AVAILABLE

Single BTEC Level 3 (equivalent to 1 A Level)

#### ENTRY REQUIREMENTS

Standard advanced entry requirements

#### Plus

Grade 5 or above in GCSE Biology and Grade 4 another Science GCSE

#### Or

Grade 5/4 in GCSE Combined Science

#### Plus

Grade 4 in GCSE Maths

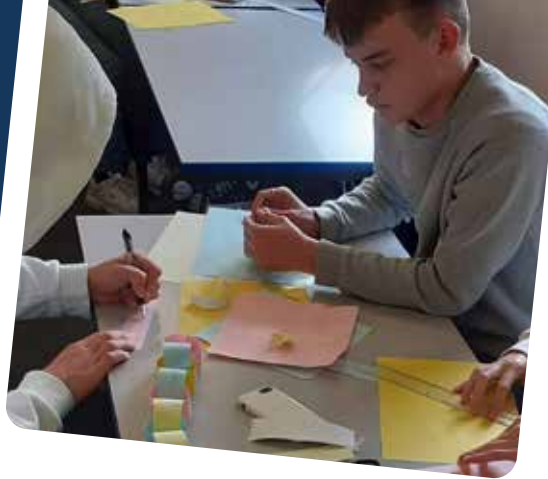
#### HOW THE COURSE IS ASSESSED

Coursework and examination

#### OTHER INFORMATION

Applied Human Biology goes well with Sport, Health & Social Care and Psychology.

# BUSINESS STUDIES



**If you are interested in running your own business or understanding how businesses work, a business course could be right for you.**

You will study business in a variety of forms (example large/small, UK focused/global, service/manufacturing) and consider such topics as the nature of business and the importance of the context it operates within. You will study and research the internal and external influences that shape the important strategic decisions that all businesses have to make – these might include zero inflation and low interest rates, the slowing down of growth in China and the potential conflict between the market's demand for competitive prices and shareholder's desire for profits.

Assessment on the course will require your development of good quantitative and analytical skills that will be used in case study scenarios drawn largely from real business situations.

The course is geared towards the contemporary business world and students will have to engage with the reported business news, you will be encouraged to keep a case book of current business issues.

## TOPICS COVERED

- What is business?
- Managers, leadership and decision making
- Decision making to improve marketing performance
- Decision making to improve operational performance
- Decision making to improve financial performance
- Decision making to improve human resource performance
- Analysing the strategic position of a business
- Choosing strategic direction
- Strategic methods: how to pursue strategies
- Managing strategic change

## COURSE ESSENTIALS

### COURSE AVAILABLE

A Level

### ENTRY REQUIREMENTS

Standard advanced entry requirements

### Plus

Grade 4 in GCSE Maths

### HOW THE COURSE IS ASSESSED

100% exam (3 x 2hr exams)

“Studying this course has benefitted my understanding of the business world, both within the college and outside. I have really grown as a person in responsibility and attitude.”

**Michael Carter, ex  
Peacehaven Community  
School**





# BUSINESS VOCATIONAL



If you want a foothold in this community then then a vocational course could well be a first step. Whatever your chosen career path, a business course will help you on your way: directly into employment or to higher level study. We choose topics and assignments based on real organisations or situations which reflect the opportunities that the city has to offer. You will develop the range of skills required in business through the varied ways that portfolio evidence is collected: individual research and report, presentations and simulated and real business activities.

The new suite of BTEC Nationals were designed in association with leading Universities and Employers with academic and career progression in mind. All Business students at Varndean have the opportunity to compete to be accepted onto the prestigious 'Paths 2 Success' mentoring programme which offers work internships and individual Business Mentors to the winning candidates.

## TOPICS COVERED

### BTEC SINGLE

(4 units: 3 mandatory, plus 1 optional)

- Exploring Business
- Developing a Marketing Campaign
- Personal and Business Finance
- Recruitment and Selection Process

“My teacher shows such amazing enthusiasm and has provided me with all the support I have needed, always ready to answer my questions and provided helpful resources. Their great teaching style has encouraged me to study international business at university.”

**Marina Farag, ex Cardinal Newman School**



## COURSE ESSENTIALS

### COURSE AVAILABLE

Single BTEC Level 3 (equivalent to 1 A Level)

### ENTRY REQUIREMENTS

Standard advanced entry requirements

### HOW THE COURSE IS ASSESSED

Year 1 - 50% Coursework, 50% exam  
Year 2 - 33% coursework, 67% exam  
Total - 42% coursework, 33% exam, 25% controlled external assessment

### OTHER INFORMATION

Brighton & Hove has approximately 9,500 VAT registered business and six major employers with more than 1,000 employees. It also has the highest rate of self-employed workers in the southeast. (Brighton and Hove Economic Strategy 2008 – 2016).

## OUR STUDENTS

# ANNA ZHANG

### STUDIED:

International Baccalaureate Diploma

### PREVIOUS SCHOOL

Varndean School

### WHAT NEXT?

Medicine, University College London

“I chose to study at Varndean because I was drawn to the breadth, complexity and international nature of the IB. I had always felt torn between Humanities and Sciences, and knew I didn’t want to give up subjects like History at advanced level. I also loved the smaller scale, both within the IB community and the college as a whole. I felt I would be more noticed as a student, and that the support and connections I made with teachers would be more tailored to my own needs.

I absolutely love the combination of subjects I chose. Doing History, Chemistry and Biology at HL has allowed me to further my interest in the overlap between science and people, which I explored in my Extended Essay on vaccine hesitancy in Hong Kong. Studying the sciences at this level and learning from deeply enthusiastic tutors has made my experience at Varndean invaluable, and I have loved learning about the intricate mechanisms and theories as to why things happen in the way they do. However, my HL History lesson will always be my favourite of the week because of the historical perspectives we explore in complicated subjects like the French Revolution and Imperial Russia.

Due to my aspiration to study medicine, I attend the MedVetDent Society where we discuss the application process, explore work experience opportunities and find out about any medicine-related talks that we can attend.

I led a team to the final of the Oxford University Practical Ethics and Responsibility competition where we created a video on the ethics of organ donation and the opt out system. I also competed in the Royal Society of Chemistry Analytical Competition where our team came first in the college category, as well as the Cambridge Chemistry Challenge in which I received a silver award.

Studying the IB has meant I’ve met people with a huge mixture of interests, and I am so grateful that I’ve been able to grow as a person surrounded by interesting perspectives and ideas. I have also made strong connections with tutors who have influenced how I learn, challenge myself and support my mental health. Without them, I would be a completely different person.”

“I was drawn to the breadth, complexity and international nature of the IB”



# CHEMISTRY



## Why you would study Chemistry? Chemistry has worldwide impact.

As a fundamental physical science it has a lasting effect on our planet and will be needed to help tackle the challenges society faces in changes to environment, food security and energy supply. Almost every new technological change and important discovery has its foundations in Chemistry.

Chemistry is the key to life and making the world a better place in which to live. It provides the basis for medicine, agriculture, food technology, environmental science, forensic science and many other fields.

Having a chemistry qualification is like having an open flight ticket to any destination in the world!

### YEAR 1

- Atomic structure
- Bonding
- Periodic table
- Mole theory
- Organic chemistry
- Energy and resources
- Physical chemistry

### YEAR 2

- Further organic chemistry
- Polymers
- Analysis
- Equilibria
- Rates (kinetics)
- Energetics
- Further mole theory

“I chose Chemistry in order to follow a career in medicine and loved how challenging it was at secondary school. Every lesson has been interesting and different. The practicals have been on a whole new level and I am inspired to just learn more when I leave the classroom.”

**Anna Zhang, ex Vardean School**



## COURSE ESSENTIALS

### COURSE AVAILABLE

A Level

### ENTRY REQUIREMENTS

Standard advanced entry requirements

#### Plus

Grade 6 in GCSE Chemistry and another Science GCSE

#### Or

2 x Grade 6 in GCSE Combined Science

#### Plus

Grade 6 in GCSE Maths

Students may also need to attend additional Maths support class, as required

### HOW THE COURSE IS ASSESSED

You will take three written exams at the end of two years of study for A Level. Practical work is reported separately.

### OTHER INFORMATION

Opportunities exist to undertake project work at both local universities and to take part in the Chemistry Olympiad, C3L6 and the Analytical competitions. There are trips to conferences and lectures.

# CLASSICAL CIVILISATION



## ADVANCED LEVEL COURSES

**Classical Civilisation develops the skills needed for A-level, undergraduate and postgraduate study.**

Students study a variety of subjects from literature and law, to politics, history and economics, in addition to mythology and philosophy. Rather than as separate subjects, they will develop an understanding of how these disciplines inter-relate in order to build an understanding regarding the culture of 8th – 4th century BCE Greece and 2nd century CE Roman Republic and Empire. The aim is for students to develop a better standard of critical judgement to prepare themselves for higher education and progression after college.

### YEAR 1

- Greek Drama: we explore Greek theatre by reading two tragedies and a slapstick comedy. The playwrights use myths to explore important issues concerning relationships between men and women, family and society, the ruler and his people, human beings and the gods. This unit also involves the study of visual/material culture.
- World of the Hero: we read Homer's epic poem 'The Iliad', considering issues of love and revenge, honour and shame, heroism and suffering during the epic siege of Troy. As Achilles and the other humans count the cost, the immortal gods look down carefree from Mount Olympus.

### YEAR 2

- Love, conflict, sex, and relations in Greece and Rome: here, we explore the power of emotions with Plato, Seneca, Sappho and Ovid through their approaches to the pain and joy of desire.
- We also read Virgil's epic poem 'The Aeneid', to explore what it was to be a hero in the Roman world, including the moral values implicit in the text, such as duty to gods, state and family; the importance of fate and destiny.

"I chose this subject because I found that classics is the hidden source of how so many ideologies we live with today were conceived; from the wild cult representation of women driven to madness to the Gods. I have enjoyed being able to trace back modern day propaganda to Greek and Roman rhetoric and how the ideologies of people have moulded our social political climate." **Billie Allen, ex Brighton Girls**

### COURSE ESSENTIALS

#### COURSE AVAILABLE

A Level

#### ENTRY REQUIREMENTS

Standard advanced entry requirements

#### HOW THE COURSE IS ASSESSED

100% exam

#### OTHER INFORMATION

Each year there is a trip to Rome or Athens. There are also opportunities for visits to plays, workshops and talks.



# OUR STUDENTS

## BO-MIN RYU

**STUDIED:**

Philosophy, Classical Civilisation, Modern History (2019-21)

**PREVIOUS SCHOOL**

Blatchington Mill

**WHAT NEXT?**

Classical Archaeology & Ancient History, University of Oxford

"I chose Vardean because I was drawn by its one-of-a-kind environment, not just to learn, but to truly grow and to be seen during a crucial transitional period of life.

This is embodied in the remarkable mentality displayed across the entire faculty and staff. One which champions every student as an individual to be nurtured and celebrated. This, alongside an unwillingness to ever compromise for academic success at the cost of emotional wellbeing, creates the incredible learning atmosphere that spearheads Vardean's competitive edge. Combined with the stunning views and space offered by its location, the college was impossible to resist.

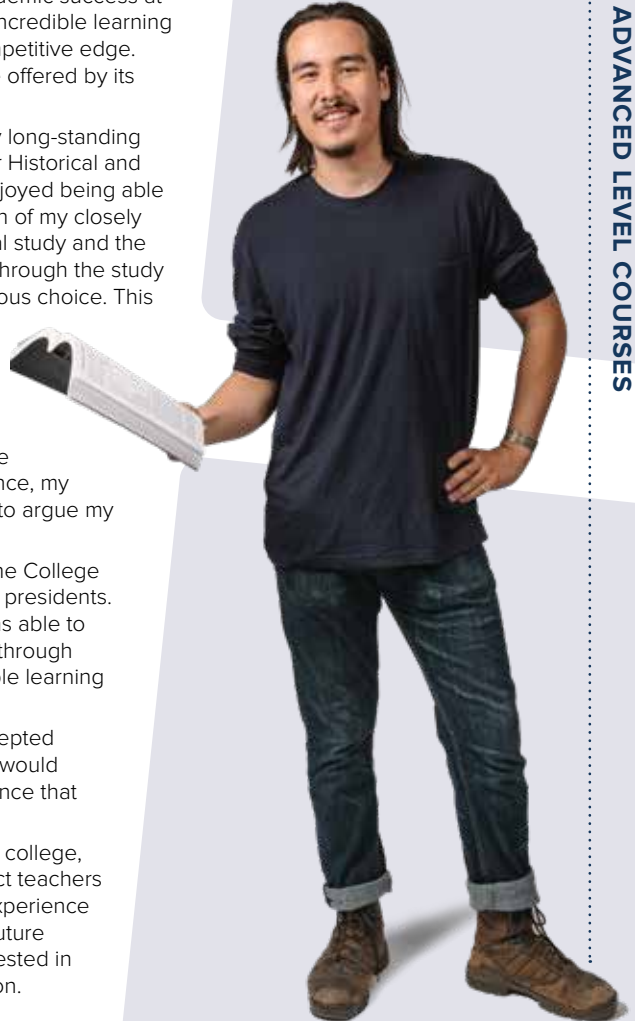
The subjects I chose to study aligned with my long-standing passion for Humanities and my aspirations for Historical and Philosophical academia. I have thoroughly enjoyed being able to blend my knowledge and skills across each of my closely aligned subjects. An avid passion for historical study and the importance of contextualizing global politics through the study of communism made Modern History an obvious choice. This was a similar case with Classical Civilisation; a fascination with ancient history coupled with the opportunity to explore history through literature, made it very attractive alongside the critical exploration of evidence in Philosophy. All these subjects instilled in me a deep confidence in my academic competence, my ability to conduct investigations and my right to argue my interpretations.

I was also involved in the student politics of the College and was elected as one of the Student Union presidents. I worked on the governing committee and was able to see first-hand the way in which ideas moved through the college to create the unique and invaluable learning environment that distinguishes Vardean.

My biggest achievement has been being accepted at Oxford University, something I am certain I would not have been able to do without the confidence that Vardean gave me.

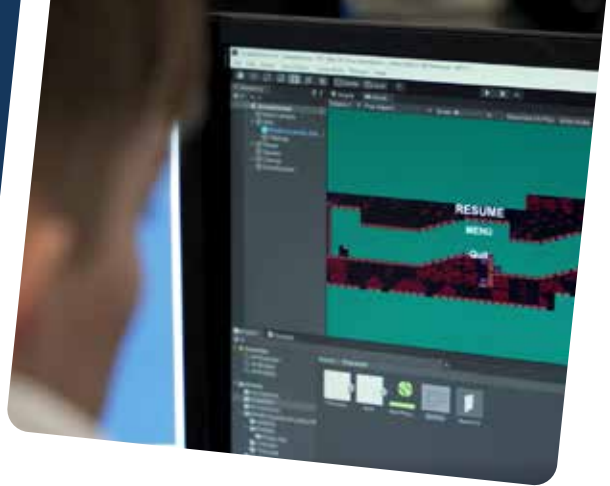
The quality of care I received from across the college, be it student support, the library, or the subject teachers themselves, has resulted in an educational experience I feel privileged to have had and excited for future students to enjoy. I felt engaged with and invested in since day one and that leaves a big impression.

**"My biggest achievement has been being accepted by Oxford University, something I am certain I would not have been able to do without the confidence Vardean gave me."**



ADVANCED LEVEL COURSES

# COMPUTER GAMES DESIGN



## ADVANCED LEVEL COURSES

### Are you keen to pursue an interest in designing and developing computer games?

Through practical projects, you will design and produce digital games by exploring the parts that make up a completed game. Sessions are workshop based so you will have hands-on experience of using industry-standard software and workflow techniques. You will produce 3D and 2D game levels, game code, game design documents, concept art and user interface elements. Visiting speakers and visits will give you an insight into working in the industry. You will develop skills in Unity, Blender, Construct3, Adobe Photoshop and Visual Studio.

#### TOPICS COVERED

##### 2D AND 3D GAME DESIGN

- Explore the underlying principles of game design and how they relate to genre and audience expectations.
- Generate your own game design ideas, prepare documentation and a game demo, and pitch to a prospective client.

##### DIGITAL CONCEPT ART

- Develop skills in digital imaging software to produce concept images for 3D objects and environments.
- Explore the importance of visual storytelling in digital games.

##### 3D ENVIRONMENT PRODUCTION

- Use Blender and Unity to 3D model and implement your own 3D game worlds.
- Explore and implement game engine functionality to enhance 3D space, such as particles, animation, post processing etc.

##### GAME ENGINE SCRIPTING

- Use Unity and Visual Studio to bring your game to life. Students can develop their scripting and coding skills further to add interactivity to their 3D or 2D game.

##### USER INTERFACE PRODUCTION

- Explore how information needs to be presented to help players make decisions.
- Create engaging and stylised user interface elements to guide player experience.

“Game Design is an unequivocal and radiant expression of freedom, allowing the delights and purity of individual students’ imagination to take centre stage. The privileges offered in this subject allow pupils to finalise their dreams, subsequently constructing their ideas with excellent support from an uplifting team of tutors.” **Current Student**

### COURSE ESSENTIALS

#### COURSE AVAILABLE

Single RSL Level 3 Extended Certificate in Creative Digital Media (Game Design) (equivalent to 1 A-Level)

Single RSL Level 3 Certificate in Creative Digital Media (Game Design) (equivalent to 1 AS-Level)

#### ENTRY REQUIREMENTS

Standard advanced entry requirements

Game, art or programming portfolios are welcomed but not essential.

#### HOW THE COURSE IS ASSESSED

The course is assessed internally, with no external exams. Learners will complete six coursework-focused units over two years of study.

#### OTHER INFORMATION

You will have individual access to a computer during lessons. Students will be expected to spend time out of lessons working on their portfolios. Although it is not essential to have a computer with internet connectivity at home, students who do not have this facility must be prepared to make full use of the College’s open access facilities.

# OUR STUDENTS

## LEO BOARD

**STUDIED:**

Computer Games Development, Computer Science, Economics

**PREVIOUS SCHOOL**

Longhill High School

**WHAT NEXT?**

Computer Games Development, University of Staffordshire

“Varndean College’s course selection was the determining factor for my decision to attend here. Additionally, there were a wide array of transport links which made travelling very simple and gave me practice on catching buses, something that I’d not done before!

I picked Computer Games Development because that is my main interest and it has been my career aspiration for a long time. I also chose Computer Science due to its crossover elements with Games Development, especially programming and coding. Economics complemented these by teaching me about companies, finance and business, alongside topics that I thought were beneficial for future employment.

Games Development taught me how to build game prototypes with specialist software and learn to be creative in my approach. The programming and coding elements I was taught in Computer Science were incredibly useful and I was able to apply these techniques to my work in Games Development.

‘Varndean Creative’ helped me develop my creative skills further, such as creating the logo with a graphic design student and working with others to draft a short film for the Dance course. In the summer of 2022, I also volunteered as a conference associate for Develop:Brighton, which gave me lots of experience which I am planning to repeat in 2023.

The learning environment at Varndean is phenomenal, and allows students to thrive. Teachers provide reliable, helpful, and honest feedback, with students being at the centre of all that they do. I am aiming to work in the video games development industry as a programmer after graduating from university.”

“The learning environment at Varndean College is phenomenal and allows students to thrive.”



# COMPUTER SCIENCE



## Computer Science is a subject that spans theory and practice.

You will become a confident programmer using different languages to solve problems. We will apply Computational Thinking to decompose larger problems into smaller ones and use a range of techniques to solve them.

In A Level Computer Science, you will learn about many interesting theory topics such as how encryption allows the safe transfer of private data over public networks. You will learn about security issues such as hacking and how viruses are spread. Programming is a key part of the course. You will be taught programming concepts in a range of languages and complete weekly challenges.

You will choose your own engaging project idea and develop your own program for a client or for fun, such as a 3D game using Unity. This project will form 20% of your final A-level grade.

For extra support we run a lunchtime Code n Cake club, come along for help with homework from a Teacher, or from one of your peers. Some students use this space to collaborate on fun projects - a great way to stand out in your UCAS application.

### YEAR 1

- Introduction to Programming
- Further Programming Techniques
- Structure of the Processor
- Types of Processor
- Software Development
- Compression, Encryption, Hashing
- Networks
- Web Technologies
- Data Types
- Data Structures
- Boolean Algebra
- Legislation and Ethical issues

### YEAR 2

- Computational Thinking
- Problem Solving and Programming
- Further Algorithms
- Types of Programming Language
- Systems Software
- Applications Generation
- Databases
- Further Boolean Algebra
- Practical Project

"I chose to study Computer Science because understanding it will play a huge part in all of our futures. Tim is a great tutor who is always happy to help out or to re-explain topics that are difficult to understand." **Jack Brown, studying Mechanical Engineering/Automotive, University of Southampton**

## COURSE ESSENTIALS

### COURSE AVAILABLE

A Level

### ENTRY REQUIREMENTS

Standard advanced entry requirements

### Plus

Grade 6 in GCSE Maths and Grade 4 in GCSE Computer Science or IT preferred

### HOW THE COURSE IS ASSESSED

Two written exams, one coursework project

### OTHER INFORMATION

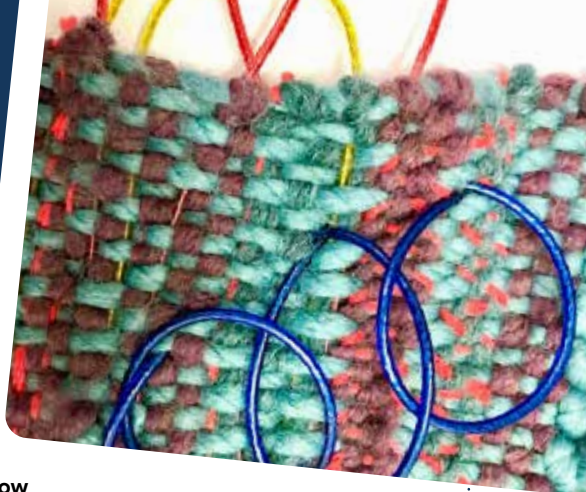
Alongside Computer Science, well-suited subjects are Mathematics or Physics. Other recommended subjects include IT, Business, Computer Games Development, Design and Music Technology.





# CRAFT & DESIGN

## (TEXTILES & FASHION MAKER)



**T Levels are new Advanced Level 3 courses, which follow GCSEs, and are equivalent to 3 A levels.**

T Levels are well suited to those with an idea of the career they aspire to. This technical and vocational qualification is created to provide the knowledge skills and experience to become a dressmaker/fashion design assistant/seamstress/tailor /wardrobe assistant.

These two-year courses have been developed in collaboration with employers and businesses so that the content meets the needs of industry and prepares students for work, further training or study.

We expect the total time for a T Level to be around 1,800 hours over the two years, including the industry placement. Every T Level includes an industry placement with an employer, focused on developing the practical and technical skills required for the occupation. These will last a minimum of 315 hours (approximately 45 days) but can last longer. Industry placements will make up around 20% of the course, with the student spending about 80% of their time in the classroom.

**STUDENTS WILL DEVELOP AN UNDERSTANDING OF A BROAD RANGE OF ISSUES RELEVANT TO THE ART & CRAFT SECTOR, INCLUDING:**

- the creative economy
- the individual in the creative industries
- cultural context and vocabulary
- audience and consumer needs
- legal and regulatory requirements
- professional standards and conduct in the workplace
- equality, diversity and inclusion requirements
- research skills
- project methodology and administration
- continued professional development

In addition to the core content, each student will also complete at least one module of occupation-specific content.

**OCCUPATIONAL SPECIALISM: TEXTILE AND FASHION MAKER**

This specialism covers the textiles, leather and sewn products, disciplines and associated techniques required, i.e. stitch, knit, weave and print. Students may make products for a range of contexts and settings. They will be required to work with more than one material and experiment with different processes, tools and techniques

**STRUCTURE OF A T LEVEL**

T Level courses include the following compulsory elements:

- a technical qualification, which includes:
- core theory, concepts and skills for an industry area
- specialist skills and knowledge for an occupation or career
- an industry placement with an employer

### COURSE ESSENTIALS

#### COURSE AVAILABLE

Level 3 T Level

#### ENTRY REQUIREMENTS

Standard advanced entry requirements

#### Plus

Grade 5 in GCSE Art or Textiles  
OR Merit or above in BTEC Level 2 Certificate in Art & Design. If GCSE Art or Technology have not been taken, suitable students with a good portfolio of work will be considered. GCSE Maths at Grade 5 also needed

#### HOW THE COURSE IS ASSESSED

Core knowledge and understanding are assessed through written exams and core skills through a practical employer-set project. Learners need to successfully complete the industry placement. Students will receive an overall grade of pass, merit, distinction or distinction\*. They will get a nationally recognised certificate showing their overall grade and a breakdown of what they have achieved. This will include:

- an overall grade shown as Pass, Merit, Distinction or Distinction\*
- a separate grade for the core component, using A\* to E
- a separate grade for each occupational specialism

It will also show that the student has:

- completed the industry placement
- met any additional mandatory requirements

# CREATIVE MEDIA PRODUCTION



**Creative Media Production is an exciting two-year course which provides the knowledge and hands on experience for students who have a keen interest in working in the creative media industries.**

This course would particularly suit you if you:

- have a fascination with all the many aspects of the Creative Media industry and how it works.
- want to know how to produce professional media artefacts and are keen to work following industry processes.
- prefer to work on a modular basis and your strength is in producing creative & technical practical work.
- demonstrate a strong personal interest and commitment to the subject area, as much of the production work will need to be completed outside of lesson hours.
- are considering a career in the Creative Media sector, as you will work on projects and create a full portfolio of work.

## TOPICS COVERED

- Filming and Editing Techniques - experimenting with different camera setups, alternative editing and post production techniques
- Working on a film set as a professional production crew shooting your own work on location
- Choose a career pathway and specialise - 'Professional (Marketing/Advertising), 'Craftsperson' (Technical/Behind the Camera) or 'Storyteller' (Directing/Writing)
- Pursuing a career in the Creative Media sector - how the industry is structured, creating a professional showreel, finding work as a media practitioner

This course should be studied in combination with other A Levels or BTECs. Students will need to commit to completing both years in order to achieve the qualification. Assessment is continuous throughout the year. You must be committed to regular attendance, working in groups and meeting strict deadlines. You will also be required to travel independently off site without supervision for filming or recording project work.

## COURSE ESSENTIALS

### COURSE AVAILABLE

Level 3 Introductory Diploma (equivalent to 1 A Level)

### ENTRY REQUIREMENTS

Standard advanced entry requirements

### HOW THE COURSE IS ASSESSED

You will be assessed in a variety of ways: tutor observation, portfolio work, research assignments, individual and group work, and through working on project briefs.

### OTHER INFORMATION

Students build a portfolio of quality work which will prove invaluable for university or employer interviews in the future.

"I chose this subject to develop my further understanding of film, and loved what the curriculum had to offer. The teachers show a genuine interest and care, in us as students and how to achieve your best work. I love the variety of opportunities it provides, including Music Video and Short Film."

**Sophia Amelia Bianciardi,**  
ex Peacehaven Community School

# CRIMINOLOGY



**Criminology is the study of criminality, what the causes are and how society deals with crime.**

There is reference to how it relates to social inequality, victimhood and the different influences such as the media, prisons and the courts on criminal justice. Lessons will be varied as per any A Level subject. You will be required to undertake independent research during lesson time and to present your findings to the class. PowerPoints, videos and case studies will often form the basis of stimulus material to illustrate key concepts. There will be a lot of reading and note-taking as well as class discussion.

The course could be studied alongside other Level 3 qualifications. However, as there is overlap between the material covered in Criminology and the material covered in Sociology, Psychology and Law, it is advised that a maximum of one of these three subjects is studied alongside.

There are four units that make up the Level 3 Diploma.

## YEAR 1

### UNIT 1: CHANGING AWARENESS OF CRIME

- You will develop an understanding of different types of crime, influences on perceptions of crime and why some crimes go unreported. You will also plan and design your own campaign for change.

### UNIT 2: CRIMINOLOGICAL THEORIES

- You will gain an understanding of theories behind why people commit crime and also the difference between criminal behaviour and deviance.

## YEAR 2

### UNIT 3: CRIME SCENE TO COURTROOM

- You will gain an understanding of the criminal justice system from the moment a crime has been identified through to the verdict.

### UNIT 4: CRIME AND PUNISHMENT

- You will examine the effectiveness of social control to deliver criminal justice policy.

"I chose this course because I find the study of criminal behaviour interesting. It seemed distinct from the other subjects on offer, I just knew I had to choose it. My favourite module was learning about the different theories behind why people commit crime. I'm also enjoying Crime and Punishment which has some overlap with A Level Law which I also study."

**Sasha Twigge-Molecey, ex Downlands Community School**

## COURSE ESSENTIALS

### COURSE AVAILABLE

Level 3 Diploma (equivalent to 1 A Level)

### ENTRY REQUIREMENTS

Standard advanced entry requirements

### HOW THE COURSE IS ASSESSED

100% exam and controlled assessment. No coursework. Units 1 and 3 assessed through computer-based controlled assessments lasting 8 hours in total for each unit. Units 2 and 4 assessed through written exams lasting 1½ hours for each unit. The controlled assessment and external exam marks are added together to give you an overall grade.

### OTHER INFORMATION

Tutors will use a variety of teaching techniques such as class discussions, group work and individual research. These are also supported with outside speakers and a variety of trips.

# DANCE



## ADVANCED LEVEL COURSES

The course will challenge you both physically and mentally and push you to become a thinking dancer whilst developing strong creative and technical dance skills. This course promotes both professionalism and artistry and is excellent preparation for those wishing to study and train in dance at higher level. At the same time it is also accessible to anyone with a genuine interest and passion for dance.

The course is an exciting and practical two-year programme of study that is assessed via practical internal and external assessment, coursework and vocational projects. There will be trips to see a diverse range of performances, as well as the chance to work with visiting dance companies and professional choreographers.

Students will have a number of performance opportunities throughout the year.

### YOU WILL:

- Study a range of work by cutting edge choreographers and learn and perform repertory from these works.
- Learn how to choreograph innovative and creative work for live performance.
- Experience a taste of the world of the working dancer through a range of classes and workshops.
- Learn how to experiment with movement and develop creativity.
- Work together as a professional company in a creative environment to produce a full-length piece of work that is performed in a professional theatre space, during the summer term.
- Form a dance company and learn how to market and promote your own performance event for Brighton Fringe Festival.
- Gain valuable work experience, assisting and stage managing at Let's Dance at The Dome, Brighton.

"I had a strong passion for dance and was extremely keen to push myself further and follow a course which would challenge me, as well as offer exciting performance opportunities. The Dance department really stood out to me and seeing videos of previous performances literally blew me away! My technique, choreography and performance skills improved massively." **Emma Staples, ex Peacehaven Community School**

### COURSE ESSENTIALS

#### COURSE AVAILABLE

BTEC Level 3 Foundation Diploma (equivalent to 1.5 A Levels)

#### ENTRY REQUIREMENTS

Standard advanced entry requirements, as well as proven successful dance experience.

#### HOW THE COURSE IS ASSESSED

Work is assessed continuously via vocational assignments.

#### OTHER INFORMATION

Due to the qualification pathway of this BTEC course, you cannot take BTEC Dance alongside BTEC Performing Arts. You must choose one or the other.



## OUR STUDENTS

# MILLY BAJPAL

### STUDIED:

Dance, Business Studies, Travel & Tourism

### PREVIOUS SCHOOL

Overseas

### WHAT NEXT?

Northern School of Contemporary Dance

"I moved from Cape Town, South Africa at the age of 17 to come and study at Varndean College. Despite starting Year 1 not knowing anyone, I can confidently say I have made friends for life and numerous memories. I chose to study Dance as I've always loved and appreciated movement, but always thought it would remain a hobby. I would never have imagined considering it as a future career.

The Dance course really enticed me, as it delves into both creative and performative elements. Both are important and beneficial, as these skills are needed to progress further professionally. I also really appreciated the variety of the course, enriching myself in different styles. There's a week of being part of staging and prepping for a large-scale show, which makes you so aware of the planning required for a show.

My dance teacher and mentor has widened my perception of dance and the lessons are both nurturing and textural. I was motivated to attend workshops and auditions. Everyone is inspiring, professional and mindful and the class brings a unique character that works so beautifully as a company."



# TILLI COTTON

### STUDIED:

Dance, Photography, Textiles

### PREVIOUS SCHOOL

Dorothy Stringer

### WHAT NEXT?

London Contemporary Dance School

"I chose Varndean College because of the inspirational atmosphere and chose my courses because I was really interested in taking these subjects beyond GCSE and finding my unique style.

In Dance we've had extensive performance experience which has expanded my love for dance and created so many amazing opportunities. In Textiles I have found inspiration through different artists and techniques and discovered my style through crochet and natural forms. In Photography I have enjoyed exploring different camera techniques and using the darkroom.

I have also attended the Dance enrichment course in which we prepared for company and university/conservatoire auditions, as well as learning how to take care of our mind and bodies as a full-time dancer.

My tutors over the past two years have inspired and supported me immensely. They are all incredibly supportive and caring of each and every student, you can see how much time they put into their subjects to create the best experience for us. I want to especially thank my dance tutor for helping me find my passion in dance and build my confidence, I wouldn't be pursuing dance as a career if it wasn't for her."



# DRAMA AND THEATRE STUDIES



This practical and busy course provides an excellent opportunity to study drama and theatre as part of our dynamic and thriving department.

You will extend your skills in the understanding of theatre and how plays are constructed, as well as the performance of drama. Varndean Drama students find this course engaging and challenging because it involves them in something that is both creative and academically rigorous. You will explore many styles of performance and attend exciting and diverse professional theatre productions throughout your studies, many of which are in London. In addition to performance skills, you will develop skills in critical analysis, observation, interpretation and communication.

## YEAR 1

- Acting induction
- Study plays (Set texts 1 & 2) - Design, direct, perform extracts
- Theatre visits

### Unit 1 : Performance Workshop (20%)

- Devising skills
- Practitioner workshops
- Adapt/create/perform original piece of theatre
- Creative log

## YEAR 2

### Unit 2 : Text in Action Project (40%)

- Working with stimulus
- Practitioner workshops
- Rehearse and perform scripted group piece
- Devise, refine and perform original theatre piece
- Written report
- Study play (Set text 3) - Design, direct, perform, extracts

### Unit 3 : Written exam - 3 x Set Texts (40%)

## COURSE ESSENTIALS

### COURSE AVAILABLE

A Level

### ENTRY REQUIREMENTS

Standard advanced entry requirements

#### Plus

Grade 5 in GCSE Drama (if taken) or a background of successful experience in productions

### HOW THE COURSE IS ASSESSED

60% practical coursework, 40% written exam

### OTHER INFORMATION:

You will be taught by Nicky and Sian, both classically trained performers, teachers and theatre practitioners with many years of experience in the industry.

You must be prepared to commit to practical acting workshops, researching cultural contexts, writing essays and workbooks, attending rehearsals and going on theatre visits. Expect to spend around £100 per year on visits.

## ADVANCED LEVEL COURSES

“The thing I have enjoyed most at Varndean is my time on the Drama course. The teachers have been phenomenal in educating and inspiring the class, which is full of talented and genuinely nice people. I would choose the course again in a heartbeat.”

**Reuben Giles, Worthing High School**



# ECONOMICS



**You only have to read a newspaper or watch TV to realise how the economic system affects our existence and future.**

In Economics, you will explore the issues of high prices for goods in Britain and low wages for students and look at broader macro-economic issues like unemployment, standards of living and management of the economy. On the international front, you will look at the realities behind the political slogans about Europe and how to improve the lives of people living in developing countries. Environmental economics recognises that our car journeys add up to congestion and pollution and then investigates remedies. There are some very significant issues facing us that, as economists, we can help to resolve, for example whether leaving the EU will benefit us or not, the impact of climate change and the levels of poverty in the UK. There are economic solutions to all of these problems.

## YEAR 1

- Measures of economic performance
- Management of the economy
- Conflicts in economics
- How markets work (supply & demand)
- Market failure
- Solutions to market failure (eg taxation & nationalisation)

## YEAR 2

- Further study on management
- International trade
- Exchange rate systems
- Growth & development
- The theory of the firm
- Labour markets
- In depth study of market failure
- Financial markets & monetary policy
- Commercial banks & investment banks
- Central banks & monetary policy
- Regulation of the financial system

“Throughout studying this course, I always remained fascinated by the subject which can be credited to my teachers as they used different techniques and activities to always make the learning so engaging.”

**Oscar Woodman-Ledger,**  
ex Varndean School



## COURSE ESSENTIALS

### COURSE AVAILABLE

A Level

### ENTRY REQUIREMENTS

Standard advanced entry requirements

### Plus

Grade 5 in GCSE Maths

Grade 4 in GCSE English Language

### HOW THE COURSE IS ASSESSED

100% exam

### OTHER INFORMATION

Trips are arranged, for example to the Bank of England, New York, Zambia, The Economist, City College London and car auctions.

# OUR STUDENTS

## SADIE BRENNAN

### STUDIED:

Childcare & Education

### PREVIOUS SCHOOL

Madras College, Scotland

### WHAT NEXT?

Outdoor Adventure Education, Plymouth Marjon University

I chose to come to Varndean because of the unique courses they offered and the support available for my Dyslexia. I chose to study Childcare and Education because I loved the idea of working with children. The hands-on experience that it provided was a huge plus, along with the wide variety of career options and transferable skills. Being the equivalent to taking 3 A levels meant that I could solely focus on studying the subject that I was interested in, and having two days per week placement also allowed me to apply what I had learned in class into practice and develop my skills further.

I enjoyed the practical aspects of childcare the most. The practical lessons were always fun and allowed me to understand the subject better. The placement gave me hands-on experience of working with children, helping me to become more knowledgeable and confident in myself.

The people, both tutors and students, are what I have enjoyed most about Varndean. Moving down from Scotland meant I was nervous about fitting in and making friends, but every member of staff has been friendly and helpful.

I have met the most amazing people in my class, I've made lifelong friends and now can't wait to move onto the next stage of my life studying Outdoor Adventure Education at Plymouth Marjon University. I hope to work in the outdoor sector afterwards.

**“I chose to come to Varndean because of the unique courses they offered and the support available for my Dyslexia.”**





# EDUCATION AND CHILDCARE (EARLY YEARS)



**This is a two-year technical course covering core educational themes from birth to nineteen years with specialist early years education and care content from birth to seven years.**

This course provides excellent opportunity for academic study alongside practical experience. Successful completion of the two years will enable students to enter the workplace as a qualified practitioner in roles such as nursery practitioner, teaching assistant, nanny, holiday rep, and other related employment. The academic skills you will develop will provide a strong basis for university study such as primary teaching, early childhood studies, special needs education and other related subjects.

## YEAR 1

- Core studies: In college you will develop knowledge and understanding of the concepts and theories of the education and childcare sector; including child development from 0-19 years, safeguarding, behaviour management, observation, assessment and planning, equality and diversity, additional needs and working with others.
- Employer Set Project: A project set by education and childcare specialists that requires you to apply your knowledge to a real-life problem in the industry.
- Work placement in either a school or nursery.

## YEAR 2

- Occupational Specialism in Early Years Education and Childcare, developing your knowledge and understanding about working with children age 0-7 years.
- Work placement in either a school or nursery.



## COURSE ESSENTIALS

### COURSE AVAILABLE

Level 3 T Level

### ENTRY REQUIREMENTS

Standard advanced entry requirements, including GCSE Grade 4 in English Language and Mathematics.

You will also need a completed DBS certificate.

A commitment to hard work and a real interest in working with children is essential.

### HOW THE COURSE IS ASSESSED

Written exams in both years, controlled assessments, projects carried out in placement and successful completion of 750 hours in placement.

### OTHER INFORMATION

Please note that this course is full time, and you cannot choose it alongside other A levels. The examining board is NCFE.

# ENGINEERING



## ADVANCED LEVEL COURSES

**Electrical, Electronic and Mechanical Engineers; Aerospace, Automotive and Nuclear Engineers; Civil Engineers and Environmental Engineers. What do they all have in common? They are all engineers!**

It is a modular course with a mixture of exams and project work and if you combine this with other suitable qualifications it will allow you to progress to your dream career in engineering.

### WHAT UNITS WILL I STUDY?

These are the six units that make up the Level 3 Extended Certificate:

#### UNIT 1 MATHEMATICS FOR ENGINEERING (EXAM)

Maths is used in all aspects of engineering; without it you would not be able to design or build anything. This unit covers all the mathematical techniques needed to solve engineering problems.

#### UNIT 2 SCIENCE FOR ENGINEERING (EXAM)

It is often said that Engineering is applied Physics. In this unit we focus on the physics that underpins engineering.

#### UNIT 3 PRINCIPLES OF MECHANICAL ENGINEERING (EXAM)

All machines and structures are designed and constructed safely using ideas from Unit 2. You will discover how to make structures that do not move (too much!) and machines that do.

#### UNIT 4 PRINCIPLES OF ELECTRONIC AND ELECTRICAL ENGINEERING (EXAM)

Electricity: how did we ever survive without it? It is the most versatile source of power that we have. Electronic engineering usually involves semiconductors and low currents. We'll be studying both analogue and digital electronics here.

#### UNIT 5 ELECTRICAL AND ELECTRONIC DESIGN (PORTFOLIO)

Here's where you will hone the knowledge and skills you learnt in Unit 4. You will complete assignments to put into practice your knowledge of Electrical & Electronic Engineering.

#### UNIT 6 COMPUTER-AIDED DESIGN—CAD (PORTFOLIO)

Here you will find out how computers can help engineers design and test their projects without having to build them first. If they don't work on the computer, then there's no point in building them. If they do, then they might work in the real world. You will learn to use CAD software to produce designs to British Standards and test them.

**To achieve the CTEC Level 3 Extended Certificate, which is equivalent to an A Level, you will need to pass all six units.**

### COURSE ESSENTIALS

#### COURSE AVAILABLE

Level 3 National Extended Certificate (equivalent to 1 A Level)

#### ENTRY REQUIREMENTS

Standard advanced entry requirements

#### Plus

Grade 5 or above in GCSE Maths  
Grade 5/5 or above in GCSE Combined Science or a 5 in Physics and a 5 in one other science

#### HOW THE COURSE IS ASSESSED

A mix of 'coursework' (33%) and externally assessed units (67%)  
Unit 1-4 are assessed through written examinations  
Units 5 and 6 are assessed internally through assignments (coursework)



## OUR STUDENTS

# ELLA TINGLEY

### STUDIED:

International Baccalaureate Diploma

### PREVIOUS SCHOOL

Oathall Community College

### WHAT NEXT?

Gap Year, then applying to Oxbridge

I chose to come to Varndean as I wanted to study the International Baccalaureate Diploma. I also really liked the campus and the staff I spoke to at my interviews were really enthusiastic. For my IB subjects I chose to study Maths, Chemistry, Physics, German, Psychology and World Literature.

I love the wide range of content we study in all of the subjects. There's always something new, one day I'm solving complex differential equations, the next I'm analysing Shakespeare, and the next I'm studying the fundamental forces and particles that make up the world, often all in one day too!

I also really like the amount of independence you get, especially in the coursework aspect of each subject. The IAs can be stressful, but I've enjoyed being able to delve into aspects of the subjects that I'm most interested in and carry out my own research.

Outside of lessons, I've been a member of the Climate and Environment Group, which has got me involved in some interesting projects to reduce the College's environmental impact. I've also taken part in a number of competitions, including the Chemistry Olympiad and the Cambridge Chemistry Challenge (C3L6), in which I achieved Gold awards, plus the Senior Maths Challenge in which I achieved a Silver award.

In 2021, just before I started at Varndean, I was also awarded the Arkwright Engineering Scholarship to help fund my studies at college and in future at university.

Varndean College is a superb academic environment in which to learn, where the staff are so helpful and supportive, and I am now looking forward to studying Civil Engineering at university in the future.

“Varndean College is a superb academic environment in which to learn, where the staff are so helpful and supportive.”



# ENGLISH LANGUAGE



## ADVANCED LEVEL COURSES

If you are interested in the English language itself – how we use language for different purposes, how speech differs from writing, and whether gender makes a difference to language-use, then this will be the right course for you.

Using a variety of spoken, written multi-modal forms, you will explore the ways in which our language-use adapts according to different contexts and analyse how a range of writers and speakers use English for their own specific purposes. From adverts, to social media exchanges to articles, we focus on how and why language cannot be separated from the society in which we live.

You will explore a diverse range of topics, including how we shape our identities according to our gender, dialects, ethnicity/diversity & power, occupation and class. As you do so, you will develop the skills of analysis, grammar and writing. Students also learn about how the English language has evolved over the last 450 years and the ways in which children acquire speech and literacy.

During the course, you will have the opportunity to produce a variety of creative writing coursework from opinion articles, reviews and memoirs, worth 20% of the final grade. In the second year of the course, you also collect your own data to undertake an Investigation unit, based on a specific linguistic area.

### UNIT 1: EXAM LANGUAGE VARIATION: 35%

- The language of identity
- Language change from 1550

### UNIT 2: EXAM CHILD LANGUAGE: 20%

- Speech or literacy development

### UNIT 3: EXAM INVESTIGATING LANGUAGE: 25%

- Research project on a key topic: Gender/ Power/ Journalism/ Dialect/ World Englishes

### UNIT 4: COURSEWORK CRAFTING LANGUAGE:

#### CREATIVE WRITING: 20%

- Two creative nonfiction texts & one commentary

"I chose English Language because I had an interest in the topics studied which I felt were explorations of areas we had not touched upon in school, eg child acquisition. I have particularly enjoyed looking at gender through language, as it allows you to question and evaluate the language surrounding you daily. I have also enjoyed our class discussions." **Phoebe Cheshire, ex Varndean School**

## COURSE ESSENTIALS

### COURSE AVAILABLE

A Level

### ENTRY REQUIREMENTS

Standard advanced entry requirements

### HOW THE COURSE IS ASSESSED

80% exam/ 20% coursework

### OTHER INFORMATION

Our popular Creative Writing enrichment class meets weekly and has produced prize-winning and published writers. It is open to anyone interested in creative work. Course trips have involved taster days at local universities and visits to the British Library and Dr Johnson's house for language change.



# ENGLISH LITERATURE



**If you enjoy reading, discussion and writing about interesting and challenging texts that are of cultural and literary significance and from a range of genres, this will be the course for you.**

Studying English Literature offers us the opportunity to study who we are and the ways we live. It examines past and present ideals of the society we live in, inviting us to engage with exciting, difficult and challenging aspects of the world we live in and the ways writers present such issues.

We read, analyse and discuss plays, novels and poetry from the past and the present. We study the ways in which writers use language, form and structure to convey meaning. We consider interpretations by different readers over time, as well as how culture and context influences readers and writers.

Texts currently studied include the poetry of John Donne, Thomas Hardy and T.S Eliot, plays such as Shakespeare's King Lear, Webster's The Duchess of Malfi and Williams' A Streetcar Named Desire. You will write an extended coursework essay comparing a pre-2000 novel, eg Kate Chopin's The Awakening with a contemporary one from a choice of three or four, examining ideas about power, identity and the importance of voice.

PLEASE NOTE: Studying English Literature at Advanced Level is an invitation to engage in and examine critical and theoretical discourse on challenging and sometimes difficult topics, all of which are dealt with intellectually and sensitively. You will also be expected to read at least two novels independently as preparation for study in class and for coursework.

"I chose this subject as I am passionately interested in literature and wished to carry on studying the subject at a higher level to improve my analytical and writing skills. Most of all, I have enjoyed the drama texts, A Streetcar Named Desire and Duchess of Malfi. I have loved looking into the deeper meanings and messages that the playwrights have tried to convey to the audience, as well as looking into the interesting historical contexts of the play."

**Poppy Dodd, ex Dorothy Stringer**



## COURSE ESSENTIALS

### COURSE AVAILABLE

A Level

### ENTRY REQUIREMENTS

Standard advanced entry requirements

The ability to read novels independently is essential as is a commitment to writing essays.

### HOW THE COURSE IS ASSESSED

80% exam, 20% coursework

### OTHER INFORMATION

You can also participate in workshops, trips to the theatre, conferences and university visits.

There are visits to the College by writers and speakers, enrichment in creative writing and the opportunity to become involved in public readings and producing anthologies.

# ENGLISH LANGUAGE AND LITERATURE



## ADVANCED LEVEL COURSES

**English Language and Literature is a dynamic and exciting course for students who feel they have enthusiasm and skill in both areas.**

It combines examining literary texts with using an understanding of how language works to create texts to suggest the speaker or writer's identity. As you work on both English Language and Literature, you will examine how spontaneous speech operates in real life and how dialogue can be represented in texts. This course enables you to study a wide range of text-types, including fiction such as novels, short stories, poetry and plays and nonfiction varieties including memoir, articles, online texts and conversational transcripts.

Lessons will mostly involve reading a wide variety of literary and linguistic texts; discussion of how language works in the texts we read; exploring how we analyse language-use in a wide range of written and spoken contexts; creating new fiction and nonfiction texts; working on writing-skills in order to be more creative, analytical and accurate. Sometimes there will be opportunities to create presentations, to watch performances of key texts on-screen or to visit theatre productions.

This is the right course for anyone who has enjoyed both English GCSEs and feels they have cross-curricular language skills and interest, which encompass the literary and linguistic. If you enjoy reading fiction and nonfiction, appreciate the creative and analytical aspects of English work and have a passion for the written and spoken word, this will be the right course for you.

### **THE COURSE CONSISTS OF:**

#### **TWO EXAMS:**

##### **Paper 1: [40%] Voices in Speech and Writing**

This focuses on exploring an anthology of text-types and one modern stage play.

##### **Paper 2: [40%] Varieties in Language and Literature**

This unit involves studying a wide range of non-fiction texts on a chosen theme, in preparation for responding to an unseen text on one theme, from the following list:

- Society and the Individual
- Love
- Loss
- Encounters
- Crossing Boundaries

We will also read and examine two literary texts on one of the above key themes.

Please note, studying English Lang/Lit at A Level is an invitation to engage in and examine texts which can sometimes include challenging and difficult topics

#### **COURSEWORK: [20%]**

Investigating and Creating Texts

- Assignment 1: students produce two pieces of original writing. I.e. one example of fiction and one of creative nonfiction writing
- Assignment 2: an analytical commentary reflecting on your studied texts and the texts you have produced

### COURSE ESSENTIALS

#### **COURSE AVAILABLE**

A Level

#### **ENTRY REQUIREMENTS**

Standard advanced entry requirements

#### **HOW THE COURSE IS ASSESSED**

80% exam, 20% coursework

#### **OTHER INFORMATION**

##### **Creative Writing**

The English Area at Varndean College offers a weekly class for writers run by published performance poet and writer, Rachel Shorer. It is an extracurricular activity open to all. In each session, she leads workshops on developing students' skills in different aspects of creative writing. Prose, poetry, drama and script writing are all covered.

##### **The English Literature Extension Class**

The English Literature Extension Class is an informal group, which meets every few weeks to discuss texts and ideas not on the course.

# OUR STUDENTS

## STANLEY COLLIS

### **STUDIED:**

English Language, Business Studies, Film Studies

### **PREVIOUS SCHOOL**

Dorothy Stringer

### **WHAT NEXT?**

Business Management & Marketing, University of West England

I chose Varndean College because when I went to the Open Day, all the courses on offer were exactly what I wanted to study, the teachers and student helpers answered all my questions fully and I was made to feel so welcome.

I chose English Literature due to it being my favourite subject at school and I wanted to learn more of the subject. I've really enjoyed reading and analysing a range of new literature, and the coursework on Jane Eyre was a great experience.

I chose Film Studies due to my enjoyment of film and media and hearing its similarities to English in its analysis also intrigued me. I have now studied and analysed lots of new films.

Business Studies I thought would be useful in life and for future job prospects. I have particularly enjoyed the marketing element of the course most of all. It's now what I'm planning to study at university.

Firstly however, I am taking a gap year and studying a Level 4 Fashion Retail and Marketing course at the Fashion Retail Academy in London. Then following that, hopefully Business Management and Marketing at the University of West England in Bristol.

**“All the teachers and student helpers answered all my questions fully and I was made to feel so welcome.”**



ADVANCED LEVEL COURSES

# ENVIRONMENTAL SCIENCE



**The word environment is used prolifically and features in many of the key debates within our society.**

This course will suit you if you want to understand what lies behind the terms used in the media so that you are able to make a knowledgeable contribution to debates or pursue a career in environmental / earth sciences. Students who enjoy a multi-disciplinary approach to learning and have a keen interest in the sustainability of our planet will find this course engaging and thought provoking.

You will gain an understanding of the physical and biological environment, as well as exploring topics such as pollution, climate change and energy. You will also learn field research techniques and using environmental data to make decisions or reinforce arguments.

This course mixes well with Geography or Biology and may also appeal to you if you are taking Politics, Business or Social Science, or want to develop your understanding of environmental issues.

## COURSE ESSENTIALS

### COURSE AVAILABLE

A Level

### ENTRY REQUIREMENTS

Standard advance entry requirements

#### Plus:

Grade 4 in two GCSE Science subjects and GCSE Maths  
GCSE Geography is useful

### HOW THE COURSE IS ASSESSED

100% written examination

### OTHER INFORMATION

The course has links with the sciences, but the material is accessible to students from the humanities or social sciences. Students undertake compulsory local fieldwork and evening lectures, as well as optional residential trips. The teaching team are actively engaged in conservation work and environmental research.

## ADVANCED LEVEL COURSES





# FILM STUDIES



If you are enthusiastic about cinema and would like to develop greater understanding and appreciation of films and acquire practical skills, then this course is for you.

You will study a wide range of films, both mainstream and independent, American and British, as well as non-English language films. You will learn about a variety of film forms including silent films, short films and experimental films. There is also practical coursework with students able to either make a film or write a screenplay and create a storyboard.

You will study and be assessed on the following three components over a two-year period:

## COMPONENT 1

**Varieties of film and filmmaking (Hollywood 1930-1990; Contemporary Mainstream and Independent US film; British film)**

- (35% of qualification) This component assesses your knowledge and understanding of six films including *La La Land* and *This is England*. Specialist topics include film spectatorship and looking at films from different ideological perspectives.

## COMPONENT 2

**Global filmmaking perspectives (Global Film; Documentary Film; Silent cinema; Experimental Film)**

- (35% of qualification) This component assesses your knowledge and understanding of five films including *Daisies* and *Mustang*. Specialist topics include experimental approaches to narrative and the importance of digital technologies in making documentaries.

## COMPONENT 3

**Production Coursework**

- (30% of qualification) In this component students will apply their knowledge and understanding of how films are constructed to their own film or screenwriting.

### Production

- Either a short film or a screenplay for a short film plus a digitally photographed storyboard of a key section from the screenplay.

### Evaluative Analysis

- An evaluative analysis of the production in comparison with other professionally produced short films or short film screenplays.

## COURSE ESSENTIALS

### COURSE AVAILABLE

A Level

### ENTRY REQUIREMENTS

Standard advanced entry requirements.

### HOW THE COURSE IS ASSESSED

70% exam, 30% coursework

### OTHER INFORMATION

There are guest speakers leading sessions on scriptwriting and Study Days at Depot Cinema in Lewes where film experts guide you through some of the set films. Students are also eligible to apply to become Young Programmers at Depot where they can learn about cinema programming and film marketing.

## ADVANCED LEVEL COURSES

"If you are genuinely passionate about film, then this is the perfect subject for you. I want to be a filmmaker and it is important to become familiar with the theoretical side of filmmaking as well as the practical side. The resources that Varndean have provided me with have aided me in expressing my creative visions." **Finley Cooper, Priory School**

# FORENSIC SCIENCE AND CRIMINAL INVESTIGATION



If you enjoy science at school and are interested in pursuing a career in science, forensic investigation and/or criminology, this is the course for you!

In Year 1 you will study Chemistry, Physics and Biology; you will complete a number of assignments and many practical investigations, gaining a wide range of skills. In Year 2 you collect and analyse forensic evidence from a mock crime scene and prepare a witness statement to present in a mock court scenario. You will also study forensic genetics and the use of DNA in investigations, criminology and criminal investigation in practice.

## TOPICS COVERED

- Principles and Applications of Science
- Practical Scientific Procedures and Techniques
- Science Investigation Skills
- Forensic Investigation Procedures in Practice
- Applications of Criminology
- Criminal Investigation Procedures in Practice
- Physiology of Human Body Systems
- Forensic Genetics

"I chose Forensic Science as I wanted to follow my aspirations of being a forensic scientist. The teachers and students are all so enthusiastic, and the content taught is very detailed and easy to follow. The lessons are inspiring and the people you will meet are amazing. The community this college has built is so positive."

**Steven Rowlands, ex The Turing School, Eastbourne**

## COURSE ESSENTIALS

### COURSE AVAILABLE

Double BTEC Level 3 National Diploma (equivalent to 2 A Levels)

### ENTRY REQUIREMENTS

Standard advanced course requirements

### Plus

Grade 5 in GCSE Maths  
Grade 5 in GCSE Core Science and  
Grade 5 in Additional Science  
or Grade 5/5 in GCSE Combined  
Science

### HOW THE COURSE IS ASSESSED

A mixture of internal (assignments) and external assessment (exam)



# FRENCH



**French is a beautiful, rich, melodious language and learning to speak and use it fluently is invaluable and enjoyable.**

You will gain a highly respected qualification and at the same time develop the skill of communicating fluently in a language that is spoken all over the world, not just in France. Studying grammar enables you to understand how the language really works so that you can express your opinions spontaneously, rather than by learning phrases by heart, and studying the cultures and topical issues of the French-speaking world will help you understand the similarities and differences between the English and French languages and their peoples. Research shows that this subject develops your confidence and personal communication skills as well as your problem solving, creative and critical thinking skills, all of which give you an edge in the job market.

## YEAR 1

- Social issues and trends

### Theme 1: Changes in French society

- Changes in family structures
- Education
- The world of work

### Theme 2: The political and artistic cultures in French-Speaking countries

- Music
- Media
- Festivals and traditions

## YEAR 2

### Theme 3: Immigration and French multicultural society

- The positive impact of immigration on French Society
- Challenges of immigration and integration in France
- The far right

### Theme 4: Occupation and Resistance

- Occupied France
- The Vichy regime
- The French Resistance

## COURSE ESSENTIALS

### COURSE AVAILABLE

A Level

### ENTRY REQUIREMENTS

Standard advanced entry requirements

### plus

Grade 6 in GCSE French

### HOW THE COURSE IS ASSESSED

100% exam

### OTHER INFORMATION

GCSE French is also offered as part of the Adult Education programme, subject to recruitment.

ADVANCED LEVEL COURSES



# GEOGRAPHY



**A brief look at the topics listed below will show you that as a Geography student you will study some of the most important and challenging issues facing the world.**

Through your studies you will develop the skills and knowledge needed by those in the public, voluntary and business sectors to make informed decisions on which the future of our planet depends. The skills learned are transferable and will open the door to many career options.

We expect you to take an active part in lessons, to ask questions and draw your own reasoned conclusions about key issues based on your research.

## YEAR 1

- The Water Cycle and Rivers
- Globalisation
- Regenerating Places
- The Carbon Cycle and Energy
- Coursework - which must involve fieldwork
- Four days fieldwork (may be taken partly in Year 2)

## YEAR 2

- Coursework – which must involve fieldwork
- Coastal Landscapes or Glaciation
- Tectonics Processes and Hazards
- Migration, identity and sovereignty
- Super powers and Geo Politics
- Synoptic study of human and physical geography in places

“I chose to study this subject due to the huge amount of job prospects this subject can offer. Renewable energy and environmental conservation are needed more than ever at the moment, which is one of the main reasons I chose Geography. So far I have enjoyed learning about renewable energy and also tectonics.”

**Angus Harvey-Whitehead, ex Varndean School**



## COURSE ESSENTIALS

### COURSE AVAILABLE

A Level

### ENTRY REQUIREMENTS

Standard advanced entry requirements

### Plus

Grade 4 or above in GCSE Maths and Science and Grade 4 or above in Geography (if taken)

### HOW THE COURSE IS ASSESSED

80% exam and 20% coursework

### OTHER INFORMATION

There are four days fieldwork for which there will be costs of around £100 plus opportunities for optional overseas trips.

# GERMAN



**German classes are varied and dynamic, including lots of conversation practice, role plays and grammar exercises to help you become a fluent speaker.**

You will use a wide range of resources, develop your language skills and broaden your knowledge of German culture. You will have the opportunity to participate in a trip abroad, for example, Berlin or Vienna. There are weekly conversation sessions in small groups or in pairs with the language assistant.

National statistics prove that if you have a language qualification you have a significantly greater chance of being employed and of landing the best jobs and yet only one in ten people continue with a language after GCSE. So, if you speak German, you will be in demand in just about every field of employment. Make sure you are one of the people who have that advantage!

## YEAR 1

### Theme 1: Social development in Germany

- Nature and the environment
- Education
- The world of work

### Theme 2: Political and artistic culture in the German-speaking world.

- Music
- Media
- The role of traditions and festivals

## YEAR 2

### Theme 3: Immigration and German multi-cultural society

- The positive impact of immigration
- The challenges of immigration and integration
- The reaction to Immigration in society and Government

### Theme 4: The Reunification of Germany

- Society in the GDR before the Reunification
- Events leading up to the Reunification
- Germany post-1989

## COURSE ESSENTIALS

### COURSE AVAILABLE

A Level

### ENTRY REQUIREMENTS

Standard advanced entry requirements

### Plus

Grade 6 in GCSE German

### HOW THE COURSE IS ASSESSED

100% exam

ADVANCED LEVEL COURSES



# GRAPHIC DESIGN



## ADVANCED LEVEL COURSES

**Graphic designers communicate ideas and information in a visual way using a combination of text and images.**

Our graphics course will allow you the opportunity to develop a wide range of graphic design skills using both handmade and digital materials, techniques and processes. You will explore type, image, colour and layout through a series of fun practical tasks developing your confidence and creativity. Graphic design projects lead to a variety of different outcomes including type design, illustration, magazine layout, packaging, poster design and even motion graphics.

In the first year, you will learn how to use Adobe Photoshop through tutorials and workshops. You will also explore the work of other artists and designers, critically evaluating and responding to various design styles and movements in order to develop your own creative ways of working.

In the second year, you will develop your own project theme in an area that personally interests you. This can include exploring the local environment, cultural identity, promoting health and wellbeing and / or investigating social and political issues as well as many other personal themes.

### YEAR 1

- Introduction to Adobe Photoshop
- Drawing / illustrating from photographs and direct observation
- Image making with photographs, collage and printmaking
- Visual identity / branding project for a local museum
- Collaborative project working to a live design brief

### YEAR 2

- More advanced Adobe Photoshop and Illustrator skills
- Develop a personal coursework project on a theme of your own choice
- Critical essay on a designer linked to your coursework project
- Externally set assignment under exam conditions
- Mount and present your final design work for exhibition

“I chose to study Graphic Design because it allowed me to experiment with photography, digital processes and print making techniques. I was drawn to the huge range of creativity and messages you could convey.” **Martha Willis, now studying Graphic Design, University of Loughborough**

## COURSE ESSENTIALS

### COURSE AVAILABLE

A Level

### ENTRY REQUIREMENTS

Standard advanced entry requirements

#### Plus

Grade 5 in GCSE Art, Design or Technology based subject

#### Or

Merit or above in BTEC Level 2 First Diploma

#### Or

If GCSE Art, Design or Technology have not been taken, suitably qualified students with a good portfolio of work demonstrating your skills will be considered. You can submit a combination of drawings, photographs, collages, sketches for logos and/or digital design work to demonstrate your creativity, imagination and technical ability.

### HOW THE COURSE IS ASSESSED

60% coursework, 40% external assignment

### OTHER INFORMATION

You do not need any prior knowledge of Photoshop or Illustrator to enrol onto this course.

# HEALTH & SOCIAL CARE



If you are interested in a career in the health sector, social care sector or teaching, you will find these courses of particular benefit. They provide an insight into health and social care professions with varied and exciting links to all aspects of health and social care. The course includes visits to local services and guest speakers.

## BTEC LEVEL 3 - SINGLE

The course consists of four units; two of these are externally examined and two are internally assessed coursework. This programme will be delivered over two years.

### YEAR 1

- Human Lifespan Development
- Meeting Individual Care and Support Needs

### YEAR 2

- Working in Health & Social Care
- Supporting Individuals with Additional Needs

## BTEC LEVEL 3 - DOUBLE

The course allows the student to complete 100 hours of professional practice (over two years) working in the local community. Students will also be able to evidence their practice to support health care applications for work or university.

The course consists of 8 units, a mixture of external and internal assessment. This qualification has been designed to account for two thirds of a two-year, full-time study programme for learners who are intending to go onto further study or work in a related sector.

### YEAR 1

- Human Lifespan Development
- Working in Health & Social Care
- Meeting Individual Care & Support Needs
- Supporting Individuals with Additional Needs

### YEAR 2

- Enquiries into Current Research in Health & Social Care
- Work Experience in Health & Social Care
- Safe Practice in Health & Social Care
- Promoting Public Health

"I knew before I started at college that I was considering a career in midwifery so I researched all university options and picked the appropriate courses to enable me to follow that career path. Health & Social Care gave me a good insight into working in the caring profession, as well as good opportunities to listen to a range of speakers." **Phoebe MacLeod, now studing Midwifery, University of Surrey**

## COURSE ESSENTIALS

### COURSES AVAILABLE

- Single BTEC Level 3 (equivalent to 1 A Level)
- Double BTEC Level 3 (equivalent to 2 A Levels)

### ENTRY REQUIREMENTS

Standard advanced entry requirements

### HOW THE COURSES ARE ASSESSED

These courses will be assessed internally through course work and externally through exams and research project. Professional practice of 100 hours must be completed for the National Diploma.

ADVANCED LEVEL COURSES



# HISTORY - EARLY MODERN



**Taking Early Modern History enables you to investigate some of the most dramatic events, issues and personalities from European and British history. The course focuses on the 16th and 17th centuries – a period of great change and conflict.**

In Year 1 we will develop a detailed understanding of the 17th Century revolution in Britain by focusing on Charles 1st and the origins and course of the Civil Wars, as well as perhaps the most controversial period in our history – our period as a republic under Oliver Cromwell and the restoration of the monarchy under Charles 2nd. You will also trace the theme of revolution through to 18th Century France.

In the second year you will investigate the phenomenon of the witch hunts in Europe and North America. To what extent was this the result of religious changes during the Reformation and why were the majority of victims women, and why did the hunts come to an end?

## YEAR 1

- The causes of the Civil Wars and the character of Charles 1st
- The growth of political and social radicalism e.g. the levellers
- From Cromwell and the Republic to the Restoration
- How transformative was the French revolution?
- Why did a new French constitution emerge?

## YEAR 2

- The theological causes of the witch craze - why did people believe, and stop believing, in witches?
- The variation in witch persecution between different countries
- Five witch craze depth studies including Berwick & Salem
- Coursework: You choose either a question derived from one of the exam topics (Modern or Early Modern) or choose a completely new topic on the Renaissance or causes of the American Civil War. The choice is yours.

## COURSE ESSENTIALS

### COURSE AVAILABLE

A Level

### ENTRY REQUIREMENTS

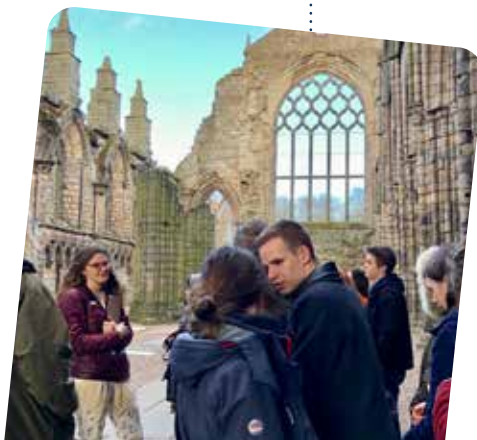
Standard advanced entry requirements

### HOW THE COURSE IS ASSESSED

80% exam, 20% coursework

### OTHER INFORMATION

In recent years we have visited New York, Washington and Edinburgh in collaboration with the Politics department. We also run a research skills trip to The Keep, Sussex University's unique archive, as part of the Historical Investigation. This is particularly useful for students aiming to study History at university





# HISTORY – MODERN



## Investigating the recent past can help us understand the lives we live today.

As a Modern History student you will have the opportunity to study and debate some of the great controversies of the 19th and 20th centuries. Was Stalin simply a 'Red Tsar'? Was Mao a dictatorial tyrant or a great reformer? In Britain, why did it take working women and men so long to get the vote? You will be encouraged to reach your own conclusions about the past and develop a range of historical skills over the two years of the course.

Studying Modern History may also give you the chance to experience the past first-hand, through visits to places such as Russia, land of the Tsars and birthplace of the famous communist revolution. Or explore your course work theme in Italy or America.

### YEAR 1

- Russia 1917–91 from Lenin to Yeltsin
- How did communism change up to 1985?
- Why did the USSR collapse in 1991?
- Mao's China 1949–1976
- How did the party establish control?
- What were the origins of the Cultural Revolution?

### YEAR 2

- Protest, agitation and Parliamentary reform in Britain 1780–1928
- Why was the vote increased & what influence did protest movements have?
- What was the role of the Suffragettes in achieving the vote for women?
- Coursework: You choose either a question derived from one of the exam topics (Modern or Early Modern) or choose a completely new topic on the Renaissance or causes of the American Civil War. The choice is yours.

### COURSE ESSENTIALS

#### COURSE AVAILABLE

A Level

#### ENTRY REQUIREMENTS

Standard advanced entry requirements

#### HOW THE COURSE IS ASSESSED

80% exam, 20% coursework

#### OTHER INFORMATION

In recent years we have visited New York, Washington and Edinburgh in collaboration with the Politics department. We also run a research skills trip to The Keep, Sussex University's unique archive, as part of the Historical Investigation. This is particularly useful for students aiming to study History at university.

ADVANCED LEVEL COURSES



# HISTORY OF ART



The study of art gives students valuable knowledge of world civilisations and helps them develop analytical skills that can be applied to understand how paintings, sculpture and architecture work to shape our social identities. This course allows students to develop particular interests and students will be encouraged to research and investigate art through first-hand experience.

## TOPICS INCLUDED

### YEAR 1

You will study painting, sculpture and architecture and focus on two themes from a choice of:

- Nature in art and architecture
- Identities in art and architecture
- War in art and architecture

### YEAR 2

You will study two periods from:

- Invention and illusion: the Renaissance in Italy (1420-1520)
- Power and persuasion: the Baroque in Catholic Europe (1597-1685)
- Rebellion and revival: the British and French Avant-Garde (1848-99)
- Brave new world: Modernism in Europe (1900-39)
- Pop life: British and American contemporary art and architecture (1960-2015)

## COURSE ESSENTIALS

### COURSE AVAILABLE

A Level

### ENTRY REQUIREMENTS

Standard advanced entry requirements

### Plus

Grade 4 in GCSE English Literature or History

### HOW THE COURSE IS ASSESSED

Two exams



# INFORMATION TECHNOLOGY



IT skills are highly valued in all aspects of business and society and there is a demand for people who have the skills to refine and apply new developments to the real world. This exciting course will enable you to develop your understanding of the latest technologies and to become a competent IT user and successful in the workplace. You will develop your technical skills in a wide range of industry-standard software packages.

## YEAR 1

### USING SOCIAL MEDIA IN BUSINESS

You will learn how social media is used to promote products and services and will undertake a practical project to develop and implement a social media plan for a business. This unit is internally assessed.

### CREATING SYSTEMS TO MANAGE INFORMATION

From the smallest in-house systems to stock control systems for large online retailers, databases are a significant part of organisational operating requirements. You will study the design, creation, testing and evaluation of a relational database system to manage information. This unit is externally assessed.

## YEAR 2

### INFORMATION TECHNOLOGY SYSTEMS

You will learn about many IT topics, from storage devices and solutions to network protocols and cyber security. There is a focus on business, and you will investigate the impact that a new IT system might have on a business, do the advantages of an upgrade always outweigh any potential issues? This unit is externally assessed.

### WEBSITE DEVELOPMENT

You will learn practical skills in web design, such as using html, css and javascript. We will investigate features that make a successful website and compare different websites. Finally, we will create a website to a client brief and upload it to the internet. This unit is internally assessed.

“I chose IT because it provides you with valuable skills that apply in the world of technology. I have particularly enjoyed the unit on social media and there is a really nice community feel in the classroom. The teacher is so supportive and friendly.” **Michael Head, ex Patcham High School**

## COURSE ESSENTIALS

### COURSES AVAILABLE

Single BTEC Level 3 (equivalent to 1 A-Level)

### ENTRY REQUIREMENTS

Standard advanced entry requirements

#### Plus

Grade 4 in GCSE Maths

Grade 4 in GCSE IT or equivalent (desirable)

### HOW THE COURSE IS ASSESSED

Exam and substantial coursework component in both first and second year.

60 % Exam, 40% Coursework

### OTHER INFORMATION

You will have individual access to a computer during lessons. Coursework requires time in addition to normal teaching. It is essential that students can manage their time effectively and be willing to work outside timetabled lessons. Open access facilities are available for this.

# INTERNATIONAL BACCALAUREATE DIPLOMA



**The International Baccalaureate Diploma is an exciting and popular alternative to A Levels.**

Varndean College has been an IB World School since 2008. We chose the IB because we think it offers something exciting and different: a broad, academically rigorous education for the whole person. The IB Diploma is taught world-wide and is internationally recognised and understood by universities and employers as excellent preparation for further study or employment.

Here at Varndean we like the IB Diploma because it challenges, encourages and inspires internationally-minded students to become caring, critical thinkers, ready for university study and a globally focused career and we are currently the only state funded provider of the IB Diploma in the county of Sussex.

The IB Diploma differs from A Levels in its breadth as well as its integration as a complete programme of study. All students are required to study English literature, a MFL, humanities subject, natural science and maths. However, students have lots of options and opportunities to customise their Diploma to suit their needs, interests and career aspirations.

Students choose one course from each of the six subject areas, three at Higher Level and three at Standard Level. The content of Standard Level courses is smaller than that of Higher Level and they are usually a little less demanding academically meaning they are also taught over fewer hours. It's important to point out that if you choose the IB Diploma you are not studying towards 6 A-levels but you will have a few more lessons during the week than your peers studying A Levels!

You should consider it seriously if you:

- are a well-organised student who enjoys a wide range of subjects and activities and who is keen not to narrow your education too early
- want a course that will extend and challenge you personally and intellectually
- want a course that will encourage you to think independently and to speak and write well in more than one language
- want to keep all your university and career options open at 16 plus
- want an international qualification, which is recognised all over the world for your future career

Please note; students wishing to study at university abroad should check country-specific requirements and the entry requirements of individual universities on the IBO website.

## COURSE ESSENTIALS

### COURSES AVAILABLE

International Baccalaureate Diploma

### ENTRY REQUIREMENTS

A mixture of at least 7 GCSEs at Grade 6 or above, including English, Maths and Science.

In addition, certain subjects at both Standard and Higher Level have particular subject requirements. For further information please refer to our separate IB Prospectus.

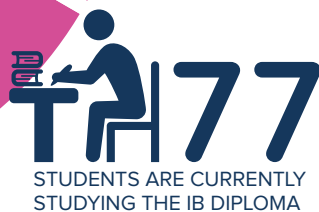
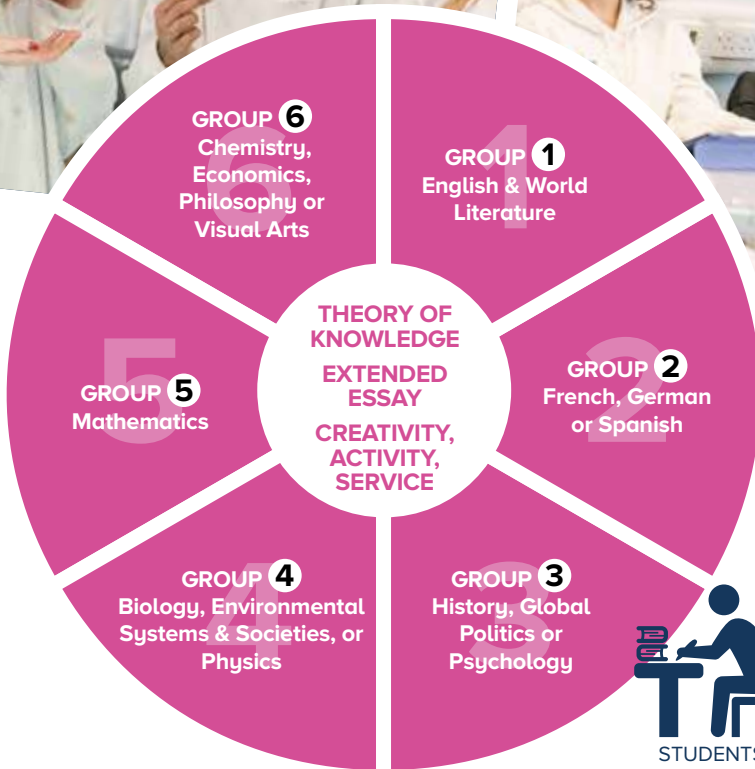
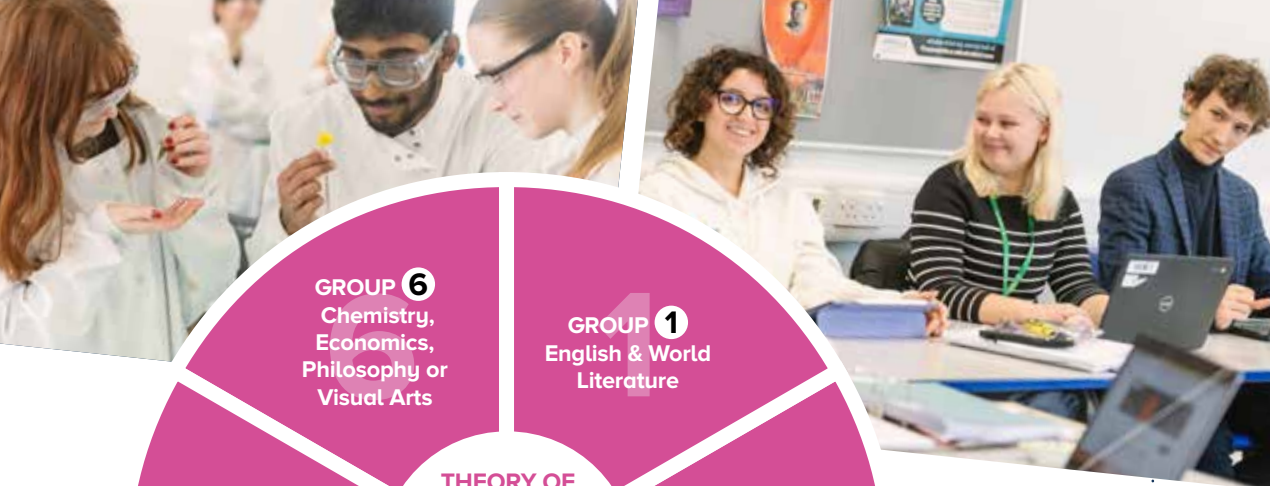
### HOW THE COURSE IS ASSESSED

The maximum possible score is 45. In order to pass the Diploma you need 24 points. There are no external examinations at the end of Year 1. All written exams take place in May of Year 2 and the results are published in July. In many subjects there is a substantial amount of coursework and assessed oral presentation. Both the Extended Essay, and Theory of Knowledge are assessed by an externally-marked coursework essay.

If you would like to find out more about the IB Diploma, come along to our

**IB Presentation on Tuesday  
10 October 2023 from  
6.30pm-7.45pm.**

Full details on our website.



## WHAT SUBJECTS ARE ON OFFER?

GROUP	SUBJECT	STANDARD LEVEL	HIGHER LEVEL
<b>1 ENGLISH &amp; WORLD LITERATURE</b>	English & World Literature	✓	✓
<b>2 SECOND LANGUAGE</b>	French	✓	✓
	German	✓	✓
	Spanish	✓	✓
	French for beginners ("ab initio")	✓	
<b>3 INDIVIDUALS AND SOCIETIES</b>	History	✓	✓
	Global Politics	✓	✓
	Psychology	✓	✓
<b>4 ENVIRONMENTAL SCIENCES</b>	Biology		✓
	Environmental Systems & Societies (ES&S)	✓	
	Physics	✓	✓
<b>5 MATHEMATICS</b>	Analysis and Approaches	✓	✓
	Applications and Interpretations	✓	
<b>6 ADDITIONAL SUBJECTS</b>	Chemistry		✓
	Economics	✓	✓
	Philosophy	✓	✓
	Visual Arts	✓	✓

## OUR STUDENTS

# AMELIA MACLEOD

### STUDIED:

International Baccalaureate Diploma

### PREVIOUS SCHOOL

Davison CE School

### WHAT NEXT?

Law, New College, University of Oxford

"I was pretty unsure on what A Levels to take because I loved so many different subjects, so when I discovered the IB I thought it was an amazing opportunity. As I enjoyed both STEM and Humanities subjects, the IB was a good fit for me with its diversity of subject material. The international focus within the curriculum allows for a better understanding of each subject and appreciation of perspective.

Aside from the academics, I also enjoyed being part of the Album Society. It was always something to look forward to which allowed us to debate and discover new styles and ideas. Created by current IB students, it was wonderful to be part of a college that allowed you to create societies about anything we were passionate about. Additional achievements which formed part of my CAS activity on the IB was competing at the South Coast Championships with my local coastal rowing club. It was immensely enjoyable being part of a crew, working hard, but also appreciating the joys of the experience without pressure, and ending up in third place.

I also participated in the College's Aspire Programme designed to support Oxbridge applicants. This was such an invaluable opportunity and has helped me to achieve an offer to study Law at the University of Oxford from September.

Vardean College is a friendly place to study where teachers are supportive and where I was stretched outside of my current skills to develop a critical way of thinking. The diversity of the International Baccalaureate has been something I've cherished."

**"The diversity of the IB has been something which I've cherished. The international focus within the curriculum allows for a better understanding of each subject and appreciation of perspective."**



# LAW



**Law is dynamic and ever changing; it regulates us in every aspect of our lives. Through studying law, you can learn to understand how and why the law affects you.**

You will learn about law through a mixture of discussion, mock trials, debate and through visits to legal institutions. Regular speakers include a local barrister, solicitor and magistrates. The course aims to develop your ability to analyse and apply legal principles, construct legal arguments and draw appropriate conclusions. Throughout, critical evaluation of current legal issues will be high on the agenda. All of these skills are highly regarded by employers and make you more employable.

## YEAR 1

- Murder, manslaughter – what's the difference?
- Non-fatal offences against the person
- Theft, robbery and burglary
- Defences: intoxication, insanity, self-defence consent
- Civil and Criminal courts
- Work and training of solicitors and barristers
- Role of jurors and magistrates
- Parliamentary law making
- Judges making the law

## YEAR 2

- Human Rights Law
- History of the Human Rights Act
- Impact of the Human Rights Act in the UK
- How are Human Rights enforced?
- The law of Tort
- What's the law in personal injury cases?
- What's the law on keeping your home safe for visitors?
- What is justice?
- Should judges make law?
- What's the difference between law and morality?



## COURSE ESSENTIALS

### COURSE AVAILABLE

A Level

### ENTRY REQUIREMENTS

Standard advanced entry requirements

### Plus

Grade 5 in GCSE English  
Grade 4 in GCSE Maths

### HOW THE COURSE IS ASSESSED

100% exam – 3 papers, 2 hours each

### OTHER INFORMATION

Students also regularly visit courts, including the Supreme Court and High Court in London. Field trips also really help develop understanding and last year students were involved in a Human Rights Symposium in London and worked with the Lawyer portal to develop understanding of the profession. In previous years there have been opportunities to consider Human Rights in Amsterdam and The Hague and explore the UN in New York. As well as taking part in national competitions, last year, two students reached the national Legal Apprenticeship finals out of 1000's of entries.

# LAW (APPLIED)



## ADVANCED LEVEL COURSES

If you excel at coursework and practical tasks, then this could be the legal course for you. The BTEC course follows a similar programme as an A level but allows you to explore the law in the real world. You will have opportunities to visit local courts, meet magistrates, solicitors and barristers and have a working knowledge of where clients can obtain advice and funding for court. Lessons will involve research activities, creating legal information films, writing reports and legal letters and debating current issues. Topics for debate will include whether community sentences are too lenient? Should life mean life for murderers? Is the compensation culture out of control?

This course has direct links with business and public services courses and will allow you to personalise your learning/interests to the area of law/business you may eventually work in.

### YEAR 1

- Unit 1: Dispute Solving in the Legal System- exploring civil law and negligence
- Unit 2: Understanding Law Making – where do our laws come from?

### YEAR 2

- Unit 3: Applying the Law - murder, voluntary manslaughter, involuntary manslaughter; property offences; police powers and general defences
- Unit 6: Contract Law

## COURSE ESSENTIALS

### COURSES AVAILABLE

BTEC National Extended Certificate (equivalent to 1 A Level)

### ENTRY REQUIREMENTS

Standard advanced entry requirements

### HOW THE COURSE IS ASSESSED

Unit 1: Online exam (summer of Year 1) with pre-seen material 1.5 hours  
Unit 2 & 6: Coursework – internally assessed  
Unit 3: Written exam (summer of Year 2) with pre-seen material 2 hours

### OTHER INFORMATION

The course is ideal for students who want to focus on the practical aspects of Law and develop their research and presentation skills. It will also make you more employable in the world of business, banking and insurance, or you could move into local authorities and the police.





# MATHEMATICS



Mathematics is an essential tool for everyday life. It gives you an important key to understanding the world we live in as you develop your mathematical skills. The problem-solving skills you will develop studying advanced level Maths are highly valued in most careers and mathematical ability is very highly regarded by both universities and employers.

## A LEVEL MATHS

### Core

- Irrational Numbers
- Algebra
- Coordinate Geometry
- Calculus
- Trigonometry
- Sequences and Series
- Vectors
- Numerical methods

### Applied Topics

- Statistics
- Mechanics

## A LEVEL FURTHER MATHS

### A Level Maths core plus

- Complex Numbers
- Conic Sections
- Polar Co-ordinates
- Hyperbolic Functions
- Matrices

### Our Option modules

- Further Pure 1
- Further Mechanics 1
- Further Statistics 1

## COURSE ESSENTIALS

### COURSES AVAILABLE

Single Maths Course - this is the regular Maths A level, examined at the end of your 2nd year.  
Double Maths Course - this course teaches the regular Maths A level and Further Maths A level. You would complete your regular Maths A Level by the end of your 1st first year, including taking the exams. In your 2nd year, you would complete your Further Maths A Level.

### ENTRY REQUIREMENTS

Standard advanced entry requirements

#### Plus

Maths: Grade 6 in GCSE Maths  
Further Maths: Grade 7 in GCSE Maths

### HOW THE COURSE IS ASSESSED

100% Exam

### OTHER INFORMATION

Students have the opportunity to take part in the UK Maths Challenge and the Southampton Cipher Challenge. University preparation classes for STEP, AEA and Oxbridge Entrance Exams are also available.



# MEDIA STUDIES



## ADVANCED LEVEL COURSES

**Media Studies complements a variety of subjects and potential progression routes. As well as gaining an informed**

understanding of Media texts and their contexts, students will also develop practical skills using the edit suite. Case studies explored on the course include Beyonce's Formation video, Black Panther, Vogue magazine and the Assassins Creed franchise. You will study and be assessed on the following three components, over a two-year period:

### **COMPONENT 1: MEDIA PRODUCTS, INDUSTRIES AND AUDIENCES**

(30% of qualification)

- This exam consists of two sections: Section A: Analysing Media Language and Representation, Section B: Understanding Media Industries and Audiences.

### **COMPONENT 2: MEDIA FORMS & PRODUCTS**

(40% of qualification)

- This exam consists of three sections: Section A: Television in the Global Age, Section B: Magazines, Mainstream and Alternative Media, Section C: Media in the Online Age. Both exams assess media language, representation, media industries, audiences and media contexts.

### **COMPONENT 3: PRODUCTION COURSEWORK**

(30% of qualification)

- Students will create two media products from the following media forms: television, magazine and marketing for film and music. Students will apply their knowledge and understanding of how texts are constructed for specific meaning and audiences.

## COURSE ESSENTIALS

### **COURSE AVAILABLE**

A Level

### **ENTRY REQUIREMENTS**

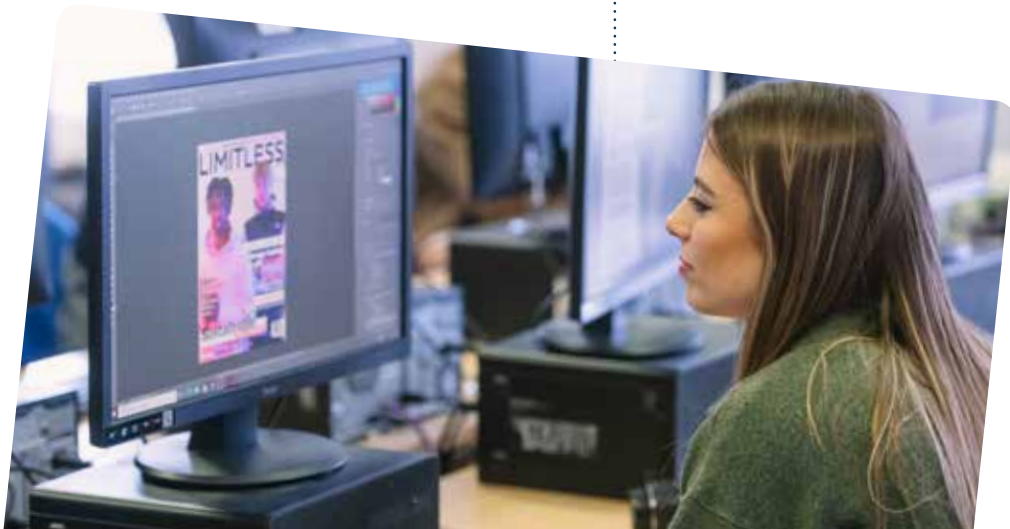
Standard advanced entry requirements

### **HOW THE COURSE IS ASSESSED**

70% exam and 30% coursework

### **OTHER INFORMATION**

There are practical workshops throughout the year on camera use, editing and digital design. All software used on this course is made available for you to work on at home. There are guest speakers leading sessions on media careers eg Frank Hopkins (BBC). Future plans include trips to The Depot for Study Days based on the set texts and industry context included in the exam.



# MUSIC TECHNOLOGY



**In a friendly and focused atmosphere, you can improve existing skills and develop new ones.**

With a focus on developing practical, listening and analytical techniques in a creative environment, the course will give you hands-on experience in both in-the-box and out-of-the-box music production contexts. We operate with industry-standard software, running Logic Pro on new M1 Apple Computers with supplementary professional grade plugins provided by our partnership with Acustica audio.

## YEAR 1

You will cover the principles and techniques of recording ranging throughout the 20th Century and present day, sequencing and mixing techniques along with a technology-focused understanding of popular music styles from 1910 to the present day, a portfolio of work including a multi-track recording, and a creative composition using synthesisers and sampling techniques will be achieved by the end of the year. You will also acquire technical skills for recording, working with industry-standard DAWs, and develop a fundamental understanding of production methods.

## YEAR 2

Developing individual skills and styles as music producers through the production of a coursework portfolio and an examined commentary. The final exam is a production task carried out under exam conditions. You will also undertake an aural analysis of unfamiliar popular songs testing your historical and production knowledge.

## COMPONENT 1

- Recording
- Non-examined assessment: externally assessed 20% of the qualification 60 marks

## COMPONENT 2

- Technology-based composition
- Non-examined assessment: externally assessed 20% of the qualification 60 marks

## COMPONENT 3

- Listening and analysing
- Written examination: 1 hour 30 minutes 25% of the qualification 75 marks

## COMPONENT 4

- Producing and analysing
- Written/practical examination: 2 hours 15 minutes - 35% of the qualification 105 marks.

## COURSE ESSENTIALS

### COURSE AVAILABLE

A Level

### ENTRY REQUIREMENTS

Standard advanced entry requirements

#### Plus

Some basic keyboard ability  
You should also be able to competently play a musical instrument or have a background in music production (a portfolio of previous productions to demonstrate your ability is preferable)  
An interest in popular music and technology  
Science GCSE at Grade 4 is also desirable

### HOW THE COURSE IS ASSESSED

60% exam at end of Year 2 and 40% coursework

### OTHER INFORMATION:

You can take part in a broad and engaging extra-curricular programme and frequent performance opportunities including Funk Band, as well as the opportunity to learn a new skill in the Introduction to DJing enrichment. Both of these are available to all students across the college.

# PERFORMING ARTS



**The BTEC Acting Diploma (540GLH = equivalent to one and a half A levels) is a two-year intensive programme structured around the development of personal acting skills and preparing to work in the performing arts industry.**

This course is 100% coursework, internally assessed over four units. This is a highly recommended course for those focused on progression to drama training and careers in the performing arts. You will take part in practical workshops throughout the course, to develop your skills and techniques as an actor and work as part of a collaborative performance company. The course is based on a drama school training model and prepares you for working with discipline and imagination on scripted and devised performance projects. Theatre visits are an integral part of the course and there are opportunities for involvement in Brighton's vibrant theatre scene with performances in local venues. On the course, you will:

- Look at planning a career in the Performing Arts Industry (types of employment, roles, self-promotion etc.)
- Explore performance styles (improvisation, naturalism, physical theatre, epic, storytelling, total theatre & devising) & create performance material for live performances.
- Create commission-based performance & take part in a major production project in the Brighton Fringe Festival.

"I have really enjoyed exploring all the different styles of theatre and how the course covers so many different elements of theatre and is practical based. I have loved the trips we have been on and found them really helpful for the course, as well as being a great opportunity to experience live theatre."

**Poppy Yorke-Williams, ex PACA**



## COURSE ESSENTIALS

### COURSE AVAILABLE

BTEC Level 3 Diploma Performing Arts Practice (Acting) (equivalent to 1.5 A Levels)

### ENTRY REQUIREMENTS

Standard advanced entry requirements

### Plus:

Grade 5 in GCSE Drama or Merit in L2 BTEC (if taken) or a background of successful experience in productions.

### HOW THE COURSES ARE ASSESSED:

The course is assessed through ongoing performance projects supported by coursework reports, which include research, documentation, analysis and evaluation. The course is 100% internally assessed on coursework and performance projects.

### OTHER INFORMATION

Due to the qualification pathway of this BTEC course, you cannot take BTEC Performing Arts alongside BTEC Dance. You must choose one or the other.

# PHILOSOPHY



**Philosophy comes from the Greek words meaning ‘love of wisdom’.**

It will involve you in thinking about thinking and learning to question basic beliefs, assumptions and ideas whilst searching for truth. Philosophy teaches you to think in a clear, logical and creative way that will help you in other subject areas and in most areas of life where critical and inventive thinking is valued. Students who study Philosophy find it challenging and exciting and many say that it changes their outlook in ways that they find useful and rewarding.

Enlightenment is not guaranteed, but studying Philosophy should make you and your life more interesting!

## YEAR 1

- Epistemology
- Ethics

## YEAR 2

- Metaphysics of God
- Metaphysics of Mind

“I chose to study Philosophy in order to improve my argument skills and learn more about my understanding of the world. I have really enjoyed being able to voice my opinions rationally. The support and faith I have received from all my tutors at Vardean and the new friends I have made in a new environment has been outstanding.”

**Rosie Corderoy Conway, ex Brighton Girls School**



## COURSE ESSENTIALS

### COURSE AVAILABLE

A Level

### ENTRY REQUIREMENTS

Standard advanced entry requirements

### HOW THE COURSE IS ASSESSED

100% exam

### OTHER INFORMATION

Philosophy combines well with all other subjects due to its emphasis on reasoning. In particular, the A Level combines well with Psychology, Sociology, Law, Politics and Classical Civilisation, Arts and Science.

# PHOTOGRAPHY



## ADVANCED LEVEL COURSES

You will be introduced to a variety of photographic media, techniques and processes. You will study traditional black and white darkroom printing as well as digital photography and learn practical skills and techniques. You will learn to research photographers' work in depth, and link these ideas with your own work.

You will be encouraged to explore ideas and push the boundaries of the medium, and develop your own individual creative concepts and approaches to photography. Understanding your SLR camera is key: using depth of field, movement, working with different films, lenses, filters and lighting. You will benefit from a wide range of facilities, including two darkrooms and will have the opportunity to work in a studio environment with our technician in a designated studio session each week. A3 logbooks are used to record your progress and research.

### YEAR 1

- Learn to use a 35mm SLR film and digital camera
- Develop and print black and white images
- Experiment with colour images both manually and digitally using Photoshop.
- Learn about the history and techniques of photography from the 19th century to contemporary images to extend your own photographic ideas
- Visit galleries in London to see photography exhibitions
- Attend lectures by visiting Photographers

### YEAR 2

- Develop your personal ideas on photography
- Practise finer techniques of black and white darkroom printing
- Experiment more widely with black and white and colour images, further exploring your camera techniques
- Continue to learn new Photoshop skills and print large colour images
- Extend use of digital SLR and a variety of lenses
- Study an aspect of photography you particularly enjoy and write an illustrated essay

"I chose to study Photography because I had always had a huge interest in it from a young age and heard Varndean College had a superb reputation. My tutors have given me great support, inspiration and kept me going in the right direction." **Zac Tenquist, ex Cardinal Newman School**

## COURSE ESSENTIALS

### COURSE AVAILABLE

A Level

### ENTRY REQUIREMENTS

Standard advanced entry requirements

#### Plus

Grade 5 in GCSE Photography (if taken)

#### Or

Merit or Distinction in BTEC Level 2 Award in Photography (if taken)

#### Or

Evidence of commitment to and aptitude for photography demonstrated through submission of work

### HOW THE COURSE IS ASSESSED

60% coursework, 40% externally set assignment

### OTHER INFORMATION

You must have your own 35mm Digital SLR camera and access to a 35mm SLR Film camera, and a tripod would be an advantage. Extra materials are available to buy in the College student shop. A3 paper and digital logbooks are used to record your progress and research.

# PHYSICAL EDUCATION



**In Physical Education A Level, learners will explore the academic aspects of physical education, sport and health, as well as reflecting on their own performance to critically analyse and evaluate practice.**

The course will examine a breadth of theoretical areas including the scientific, socio-cultural and practical aspects of physical education through which learners will develop their knowledge, understanding and skills. Students will learn through both classroom and practical settings and seek to develop their appreciation of human performance as it relates to the world of sport and fitness. The 30% non-exam assessment gives learners the opportunity to apply theory to their own sporting performance (as either a coach or athlete). It is advantageous for learners to regularly compete or coach in at least one sport at club level or above.

## **COURSE CONTENT**

- Applied anatomy and physiology
- Skill acquisition
- Sport and society
- Exercise physiology
- Biomechanical movement
- Sport psychology
- Contemporary issues in sport
- Practical performance in physical activity and sport & performance analysis

“I chose A Level PE as I am aiming for a career in sports physiotherapy or biomechanics. I really enjoy the physiology aspect and learning about why the body moves the way it does. Understanding the theory behind both the anatomical and psychological side of sport has allowed me to implement this knowledge into my own performance when competing and training.” **Grace Backshall, ex Chailey School**



## **COURSE ESSENTIALS**

### **COURSE AVAILABLE**

A Level

### **ENTRY REQUIREMENTS**

Standard advanced entry requirements

#### **Plus**

Grade 4 in GCSE Science or PE (preferred)

Performance at a competitive/club level in a sport of your choice

### **HOW THE COURSE IS ASSESSED**

70% External Theoretical Exam - Linear Assessment at end of Year 2

30% Practical Performance

Assessments and Coursework

# PHYSICS



**What is Physics? Basically, Physics tries to explain how the universe works as simply as possible, but no simpler. From Quarks to Quasars, Physics is all about understanding and predicting nature.**

Together we will look at how our world (and beyond) behaves and try to make sense of it. You will enjoy Physics if you want to find out about life, the universe and everything; develop models to explain how the world we live in works; sharpen your problem-solving skills and see how physics is used all around us. You will discover that our ideas of how things work have changed over the centuries; scientists are not always 'right'. A theory only lasts until an experiment proves it wrong! Then we need a new one. The course places great emphasis on the practical uses of the subject and is divided into themes. You still study all the Physics you would expect, it is just packaged differently and, we think, in a more exciting and enjoyable way. By the end you will see why Physics is so important to our world!

- Moving & keeping still, structures & sports: forces, motion & energy
- Why things don't break: material science
- Electricity: the most versatile form of energy
- Telescopes, LASERs & musical instruments: waves
- Atomic and quantum physics
- Particle physics
- Planets & satellites: circular motion & gravity
- Astrophysics: heat, gases & thermodynamics
- Astrophysics: radioactivity & nuclear physics
- Cosmology
- Electromagnetism: Electric & magnetic fields
- Earthquake-proof buildings: oscillations
- Environmental physics: sources of energy & their impact on the planet



## ADVANCED LEVEL COURSES

### COURSE ESSENTIALS

#### COURSE AVAILABLE

A Level

#### ENTRY REQUIREMENTS

Standard advanced entry requirements

#### Plus

Grade 6 in both GCSE Physics and another Science GCSE  
Or 2 x Grade 6 in GCSE Combined Science

#### Plus

Grade 6 in GCSE Maths  
Students may also need to attend additional Maths support class if not taking A Level maths, as required.

#### HOW THE COURSE IS ASSESSED

Three exams at the end of the course, one on each 'component'.

Practical work is assessed throughout the course and it earns you a 'Practical Endorsement' alongside your A Level.

#### OTHER INFORMATION

A Level students choosing NOT to study A level Maths will need to enrol for the essential Maths support course to cover the knowledge and skills needed beyond GCSE. You should be aware, however, that not studying Maths beyond GCSE will prevent you from applying to most Physics and Engineering degrees.



# OUR STUDENTS

## VERINA NAGUIB

### STUDIED:

Physics, Engineering, Maths

### PREVIOUS SCHOOL

King's School

### WHAT NEXT?

Civil Engineering, University of Bristol (or University of Cardiff - Insurance)

"I chose Varndean College because of its international environment, its academic achievements, self-development focus, together with the wide range of courses on offer. I think the environment is one of the most important things to consider when choosing a college and when I moved here from Italy, I was worried that I was going to struggle settling down and making new friendships. However, Varndean's environment has made it easy meeting new people and my entire college journey has been enjoyable, allowing me to grow, both culturally, socially and academically.

I have always been interested in STEM subjects and have always thought that engineering was going to be my future path, so having the opportunity to learn more about the different types of physics and engineering was one of the reasons I chose Varndean. The combination of my three subjects has given me complete preparation for my future, preparing me for either an apprenticeship or university.

I have loved how each subject is structured and have enjoyed the combination of the practical and theory. It has allowed me to expand my skills and learn in different ways. I have particularly liked studying Maths at A Level because not only does it improve your calculus skills, but also your way of thinking by the different approaches required to different aspects of Maths, ie Mechanics and Statistics. I have really enjoyed being academically challenged by my subjects and how the teachers have made each lesson so interesting.

For my enrichment activity, I studied and received the Carbon Literacy Qualification because I wanted to be aware of how our world is changing and how we can help it improve. I spent a week's work experience at a civil engineering company, helping me build a better understanding of what I would like my future to look like. I now hope to continue my studies at the University of Bristol, where I want to study Civil Engineering and in future become a qualified engineer."

"I chose Varndean College because of its international environment, its academic achievements, self-development focus, together with the wide range of courses on offer."



# POLITICS



**Politics is at the heart of everything we do. It is inspiring, exciting and relevant. It is never dull or predictable. You will learn to identify political arguments, weigh evidence against opinion and come to understand how your life is affected by political activity. You will soon find out that politics is not just about men in grey suits!**

At A Level, you will explore topics such as why people vote for particular parties – is it the media, the appeal of leaders or are there longer-term factors such as age or class? Turnout in General Elections in recent years has declined in the post-war period but was very high in the Scottish Referendum – what does that tell us about participation in politics? You will explore the impact of BREXIT, devolution and human rights legislation on the way the UK is governed.

The course could hardly be more relevant as you find out what the political parties stand for and their role in the political system and, as more citizens take to the streets, you will consider whether protest is effective and how pressure groups can influence policy. You will also examine the ‘nuts and bolts’ of our political system; the power of the Prime Minister, the role of Parliament and the limitations placed on their powers by the Supreme Court.

In the second year, you will study the politics and government of the United States and use this to complete a comparative study with the UK. You will also explore some of the main ideological traditions in politics and investigate important questions of political philosophy, such as, what makes a just and fair society?

## YEAR 1

- UK Politics
- Political ideas: Liberalism, Conservatism, Socialism
- UK Government

## YEAR 2

- Political ideas: Nationalism
- Comparative Politics, Government and Politics of the USA

“It’s a very interesting and important subject which affects so many factors of everyone’s life. I needed to understand how our political system works and key information about the people who run our country. Ideologies by far has been the most interesting topic due to the different views of society, people and the state.” **Tyreesa Cox, ex Vardean School**

## COURSE ESSENTIALS

### COURSE AVAILABLE

A Level

### ENTRY REQUIREMENTS

Standard advanced entry requirements

### HOW THE COURSE IS ASSESSED

100% exam

### OTHER INFORMATION

Vardean has a weekly Politics Society where you can hear a wide range of speakers, from MPs from all parties to pressure group activists. The department also has links to the two local universities and organises lectures from subject experts. Trips are also organised to the Houses of Parliament and party conferences, as well as residential trips to Edinburgh and the USA.



# PROTECTIVE SERVICES



**This BTEC Diploma is designed to support learners who are interested in learning about the Uniformed Protective Services sector.**

It gives them a broad basis of study, designed to support progression to higher education when taken as part of a programme of study that includes other appropriate BTEC Nationals or A Levels.

This course is particularly suitable if you are studying in preparation for employment in the Protective Services Sector, particularly in job roles where you will be expected to use physical fitness skills, research skills or carry out customer-facing operational roles. It offers skills for working in the public sector but also transferable skills for any type of employment. It is suitable if you are considering a police or military career, but also if you are interested in developing, maintaining and protecting our society. You will learn by providing evidence gathered from realistic workplace scenarios and activities. You will gain experience through a wide range of tasks, visiting speakers and visits.

The course investigates a range of Protective Services. The units we study are:

- Behaviour and Discipline in the Protective Services
- Skills for Outdoor Activities
- Team Leadership and Communication
- Professional Development in the Protective Services

“I had a keen interest in the emergency services and military and wanted to learn more about the mounted police and cavalry. Some of the most enjoyable moments of this course have been the practical lessons where we’ve tested our skills and abilities in situations we would face if working in public services. Another has been the team building exercises which have helped develop our communication and listening skills.”

**Jack Poulton, ex Dorothy Stringer**



## COURSE ESSENTIALS

### COURSES AVAILABLE

Single BTEC Level 3 (equivalent to 1 A Level)

### ENTRY REQUIREMENTS

Standard advanced entry requirements

### HOW THE COURSE IS ASSESSED

You will be continuously assessed with a series of assignments based on real organisations and projects. BTEC courses require an external assessment with an exam at the end of the first year for one mandatory unit.

# PSYCHOLOGY



## ADVANCED LEVEL COURSES

**Research Methods:** Knowledge and understanding of research methods, providing an opportunity to design and evaluate a novel piece of research.

**Psychological themes through Core Studies:** Focus on some of the central areas of investigation, looking at 'landmark' pieces of research that have helped to shape the course of

Psychology. The aim is to develop essential critical thinking and independent learning skills.

**Applied Psychology:** Exploration of themes and debates to draw students into the heart of psychology.

### UNIT 1

#### Research methods and techniques

- Data recording, analysis and presentation
- Report writing
- Science in psychology

### UNIT 2

- Attention
- Memory
- Regions of the brain
- Brain plasticity
- Understanding disorders
- Responses to people in need
- Responses to people in authority

### UNIT 3

#### Mental Health

- The biochemical explanation of mental illness
- The cognitive neuroscience explanation of mental illness

#### Criminal Psychology

- Physiological and non-physiological explanations of criminal behaviour.
- The use of forensic evidence and offender characteristics in crime scene analysis

#### Sport and Exercise

- How an audience can facilitate or inhibit sports performance
- Benefits of exercise on mental health

"Psychology is a fun, interesting subject that gives many perspectives of human behaviour and explains why people behave the way they do! It has opened many doors for my future. I've decided it's what I now want to study at university, with a wide range of courses that lead to a wide range of careers. The course has a great mix of practical elements, such as observation experiments, as well as written elements."

**Eve Neller, ex Warden Park Academy**

## COURSE ESSENTIALS

### COURSE AVAILABLE

A Level

### ENTRY REQUIREMENTS

Standard advanced entry requirements

### Plus

Grade 4 in GCSE Maths and Science

### HOW THE COURSE IS ASSESSED

100% exam

### OTHER INFORMATION

The entry requirement for studying Psychology at degree level at university is a Grade 5 in GCSE Maths and English, at some universities they may require a Grade 6. Scientific concepts and terminology are essential to this course. There will be a variety of trips and visits. These may include trips to the theatre to see relevant plays, observation of animal behaviour and conferences in London.

# PSYCHOLOGY (APPLIED)



## Psychology is the scientific study of the brain and behaviour.

An understanding of human behaviour is fundamental to many jobs in society and the study of psychology at degree level and beyond remains a very popular choice. Studying Applied Psychology will give you the opportunity to explore the theoretical, methodological and vocational context of Psychology.

This course is perfect if you prefer a combination of coursework and external exams with 58% examination, 42% coursework. Tutors use a variety of teaching techniques such as class discussions, group work and individual research to form the basis of each assignment. These are also supported with outside speakers and opportunities to attend conferences.

### YEAR 1

#### Unit 1 Psychological Approaches and Applications:

- Some basic ideas from different approaches in psychology will be introduced. Students will develop an understanding of how psychological research and concepts can explain gender identity, aggression and consumer behaviour.

#### Unit 2 Conducting Psychological Research

- In this unit, students will learn about the importance of research in psychological inquiry and about the types of research that take place. Students will gain an understanding of the research process and the key methods used extensively by researchers to test theories and provide information about the ways in which people think and behave. Students will learn how to plan and conduct their own investigation.

### YEAR 2

#### Unit 3 Health Psychology

- Students will learn about the psychological and behavioural processes in health, illness, and health care. This unit is concerned with understanding how psychological, behavioural, and cultural factors contribute to physical health and illness, including stress and addiction.

#### Unit 4: Criminal and Forensic Psychology

- Criminal and Forensic Psychology will be taught as the optional unit. Students will explore the different theories used to explain criminal behaviour and the application of criminal and forensic psychology in the criminal justice system.

“I really enjoy Applied Psychology, it has been my favourite subject at college. It is very fascinating because it gives an insight into the human mind and why people behave in the way that they do. You learn useful and interesting facts about the brain and human behaviour.”

**Jared Honan, ex Blatchington Mill**

## COURSE ESSENTIALS

### COURSE AVAILABLE

Single BTEC Level 3 (equivalent to 1 A Level)

### ENTRY REQUIREMENTS

Standard advanced entry requirements

### Plus

Grade 4 in GCSE Maths and Science

### HOW THE COURSE IS ASSESSED

All units are awarded either Pass, Merit or Distinction. The coursework and external exam marks are added together to give you your overall grade, e.g. a Merit overall is equivalent to a C at A Level. Four units are taught in total and two of these are externally assessed. External assessment is 58% of the course and 42% is coursework.

### OTHER INFORMATION

To study Psychology at degree level, a grade 5 in GCSE Maths and English is required. Scientific concepts and terminology are essential to this course.

# SOCIOLOGY



**Sociologists ask questions about the behaviour of individuals and groups in society.**

So, if you are interested in people or if you want to understand what is happening in the world, you should find it enjoyable and thought-provoking. You will investigate issues affecting your life such as crime and deviance, education, health, global development, and inequalities in terms of gender, social class and ethnicity. You will also learn about the research methods that Sociologists use to investigate society. We try to understand how society operates and why problems sometimes arise. You will not be told what to think, nor is it just a lot of facts to be learnt by heart. We encourage you to question things people take for granted and help you work out your own ideas based on evidence and theories from different sociological perspectives, such as Marxism, Functionalism, Feminism and Postmodernism.

## YEAR 1

- Health
- Education
- Research Methods

## YEAR 2

- Global Development
- Crime and Deviance
- Sociological Theory

“Sociology has changed my perspective on the world and the way in which I think. I have deepened my knowledge on many levels and have become more cultured, a more critical thinker and more socially conscious. The topics studied are all applicable to our contemporary society today. As an aspiring primary school teacher, I have especially enjoyed the unit on education.” **Amanda Burton, ex Hove Park School**

## COURSE ESSENTIALS

### COURSE AVAILABLE

A Level

### ENTRY REQUIREMENTS

Standard advanced entry requirements

### HOW THE COURSE IS ASSESSED

100% exam

Three, two-hour exams at the end of the course.

### OTHER INFORMATION

There are opportunities to attend student conferences at both local universities and in London, as well as attending talks at college by visiting speakers relevant to Sociology. You will be encouraged to attend the Sociology Society or join the Feminist or Politics Societies. Sociology goes well with many other subjects including Psychology, Politics, Economics, English, Media Studies, History, Law and Philosophy.



# OUR STUDENTS

## TAYLOR KALICK

### STUDIED:

Sociology, Politics, Law

### PREVIOUS SCHOOL

Patcham High School

### WHAT NEXT?

Human, Social and Political Sciences, University of Cambridge (or Politics & International Relations, University of Aberystwyth - Insurance)

“Having looked at a number of different options, Varndean seemed to be the college to offer the best content and resources in my area, both geographical and academic. Varndean also seemed to offer a very supportive environment whilst still being professional and driven academically.

The additional support offered by teachers was also something which drew me to Varndean, as it showed me that it was a place in which I could succeed even if I struggled with the transition from secondary school.

When choosing my subjects, there was a combination of personal career aspirations, love for my subjects and of course what the college offered. Studying Politics allowed me to gain a better understanding of the UK political system and the wider ideologies which drive social change. The Politics Department is filled with magnanimous people who find many different ways to teach a particular subject. Studying Sociology was something I previously had a love for, given that I studied it at GCSE, and lessons continued to be varied and interesting. I found the Law course engaging and we, as students, had plenty in common. For my enrichment I attended the Politics Society where we had a range of visits from local MPs.

What I enjoyed most about Varndean College was that my lessons were always so fun and this led to a sense of excitement prior to every class; unusual for students at many places, but it seems common practice here.”

“Varndean offered a very supportive environment whilst still being professional and driven academically.”



# SPANISH



**Spanish is spoken by 470 million people worldwide and it is growing in popularity all the time.**

If you enjoy being able to communicate in another language and if you are interested in the culture and society of the Spanish speaking world, then we have the course for you.

## YEAR 1

### Theme 1: The evolution of Spanish society

- Changes in family structures
- The world of work
- The impact of tourism on Spain

### Theme 2: The political and artistic cultures in Spanish-speaking countries

- Music
- Media
- Festivals and traditions

## YEAR 2

### Theme 3: Immigration and Spanish multicultural society

- The positive impact of immigration on Spanish society
- Challenges of immigration and integration in Spain
- Public and social reaction towards immigration in Spain

### Theme 4: The Franco years and the transition towards democracy

- The Spanish Civil war (1936–1939)
- The dictatorship of Franco
- The transition from dictatorship to democracy

## COURSE ESSENTIALS

### COURSE AVAILABLE

A Level

### ENTRY REQUIREMENTS

Standard advanced entry requirements,

#### Plus

Grade 6 in GCSE Spanish

### HOW THE COURSE IS ASSESSED

100% exam

### OTHER INFORMATION

GCSE Spanish is also offered as part of the Adult Education programme, subject to recruitment.





# SPORT OR SPORT & EXERCISE SCIENCE



The programmes encompass areas of study from physiology, psychology and social issues, to sports coaching, leadership, health & fitness, as well as practical performance analysis and development.

Sessions are a mixture of academic theory with applied vocational practice, aimed to develop your knowledge and performance skills as a great pathway to study at university or step into a career in the sports industry. Students can study different sizes of the Sports BTEC, running for two years alongside other A Levels or Vocational Qualifications.

## **BTEC SPORT - TOPICS COVERED** AVAILABLE AS A SINGLE (EQUIVALENT TO 1 A LEVEL) OR DOUBLE (EQUIVALENT TO 2 A LEVELS)

- Anatomy and Physiology in Sport (Examined Unit)
- Fitness Training and Programming (Examined Unit)
- Professional Development in Sport
- Sports Leadership
- Fitness Testing
- Sports Psychology
- Practical Sports Performance
- Coaching for Performance
- Sports Business (Examined Unit)
- Skill Acquisition

## **BTEC SPORT & EXERCISE SCIENCE – TOPICS COVERED** AVAILABLE AS A DOUBLE (EQUIVALENT TO 2 A LEVELS)

- Sport and Exercise Physiology (Examined Unit)
- Functional Anatomy (Examined Unit)
- Sport and Exercise Psychology (Examined Unit)
- Field and Laboratory-based Fitness Testing
- Coaching for Performance and Fitness
- Biomechanics in Sport and Exercise Science
- Specialised Fitness Training
- Applied Research Methods
- Research Project

“I chose Double BTEC Sport because it’s something I am really passionate about. I love to play football, as well as other sports, and liked that I could train and play matches with the RMA alongside my education. After college I am intending on studying football coaching and performance at the University of South Wales. **Ryan Heasman, ex Peacehaven Community School**

## COURSE ESSENTIALS

### **COURSES AVAILABLE**

Single BTEC Level 3 Sport (equivalent to 1 A Level)  
Double BTEC Level 3 Sport or Sport & Exercise Science (equivalent to 2 A Levels)

### **ENTRY REQUIREMENTS**

Standard advanced entry requirements,

#### **plus:**

Minimum Grade 4 in GCSE Science (if taking Sport & Exercise Science course)

### **HOW THE COURSES ARE ASSESSED**

The courses are assessed through a range of methods including external exams, internal coursework assignments and a range of practical assessments. These all contribute to students gaining an overall grade.

### **OTHER INFORMATION**

Students may also undertake additional vocational qualifications to support their Level 3 programme and diversify their CV. These include:

- Gym Instructing
- Sports Leadership
- Coaching Badges
- Duke of Edinburgh

Whether you are motivated by developing your sports performance or just interested in getting back into sport, these courses have something for you.

## OUR STUDENTS

# DAN LENTON

### STUDIED:

Patcham High School

### PREVIOUS SCHOOL

Sport & Exercise Science, Biology, Geography,  
HSLA

### WHAT NEXT?

Exercise and Sports Sciences, University of Exeter  
(or Sports, Therapy & Rehabilitation, University of  
Kent - Insurance)

"I chose to come to Varndean College for the Sport and Science facilities as they had recently built an incredible new STEM Centre which became immediately attractive to me.

I chose my subjects, not only because I have always had a huge interest in them, but also because I want a career in Physiotherapy or Sports Therapy. Additionally, they linked well with each other so I was able to apply my knowledge from one subject to the other.

I have always been passionate about sport from a young age and to develop my knowledge and understanding further, I knew Sport and Exercise Science was the right course. I chose Biology as I knew it would link well with Sport, and Geography because I excelled in it at GCSE and because I wanted to learn more about the world we live in. All three subjects had practical elements too which I enjoy. Alongside these courses, I also participated in the High Sports Leaders programme, for which I have received the Higher Sports Leaders Award.

What I've really enjoyed most about Varndean College is the superb community feel of the campus. The tutors are brilliant and treat you like an adult, and getting to college has also been easy with accessible transport links.

I am now hoping to go to the University of Exeter to study Exercise and Sports Science, with the ambition of becoming a sports therapist."

"What I have really enjoyed most is the superb community feel to the campus."



# SPORT ADDITIONAL COURSES



**We offer the opportunities for students to undertake industry led vocational qualifications to support their Level 3 programme. These can be studied as an additional course alongside their A Levels and BTECs to enhance their employability opportunities as well as their knowledge and skills in coaching and fitness.**

These courses qualify students to work independently within a professional environment such as any fitness and sports coaching organisation. In the past students have gained employment directly from studying these courses and have gained paid work at variety of organisations including, David Lloyd gym, Freedom Leisure, The Gym Group. They have also delivered their own sports coaching sessions for local school providers and coaching organisations, such as the RMA.

## CERTIFICATE IN GYM INSTRUCTING

Level 2 Certificate in Gym Instructing provides learners with the knowledge and skills that are needed to plan, deliver and supervise safe and effective exercise programmes within a gym or health club environment.

### TOPICS INCLUDE

Theoretical study on the human body in action, health and nutrition, training principles, fitness programming and working in the fitness industry. You will learn how to instruct fitness sessions in the gym, teaching different techniques and training methods to clients, as well as developing training programmes and reflective performance. This is an excellent course for those wishing to enter the health and fitness sector with a wealth of career opportunities.

This qualification is awarded by Active IQ and professionally recognised by The Register of Exercise Professionals (REPs) and the Chartered Institute for the Management of Sport & Physical Activity (CIMSPA), which allow you to work in the fitness industry.



### COURSE ESSENTIALS

#### COURSE AVAILABLE

Level 2 Certificate in Gym Instructing

#### ENTRY REQUIREMENTS

Standard pre-advanced course requirements, you will be required to complete an early assessment based on your capabilities within a fitness environment.

Experience of gym-based exercises, including resistance training methods and equipment.

The course requires physical exertion and individual participation; therefore a degree of physical fitness is essential.

#### ASSESSMENT

Professional competency through observation of practical instructing, coursework, multiple choice exam, portfolio of evidence.

#### OTHER INFORMATION

This course is aimed predominantly at second year students wishing to enter the fitness industry after college. However, first year students will be considered on an individual basis and can complete the Higher Sports Leadership Award in Year 2.

ADVANCED LEVEL COURSES

Active iQ

# SPORT ADDITIONAL COURSES



## ADVANCED LEVEL COURSES

### HIGHER SPORTS LEADERS

The Level 3 Certificate in Higher Sports Leaders course is aimed at any students wishing to develop their leadership and sports coaching skills to support the growing numbers of sports leaders who make sport such a vibrant part of community life today.

Students will learn how to plan and lead activity sessions and run sports events. They will work with children of different ages and abilities and support community sport activities. The course is a mixture of theory and practical activity that includes sports leading in the college environment, coaching in a range of local schools and volunteering at community clubs. This course links perfectly to voluntary work and participation in sport outside of college.

“I chose this as an add on to all my other subjects, as it was one lesson a week and really practical. The course helps you develop as a person and a coach, meet new people and use practical sessions to learn key skills. I have coached at a range of local primary schools, planned city wide sports events and also volunteered at school events like the district athletics finals at Witheadan and cross-country finals.”

**Lauren Bowtle, ex PACA**

### COURSE ESSENTIALS

#### COURSE AVAILABLE

Level 3 Certificate in Higher Sports Leaders

#### ENTRY REQUIREMENTS

Standard pre-advanced course requirements.  
Experience of leading or coaching in school or the community or a passion to enter this pathway is essential.

#### ASSESSMENT

Assessed practical sessions, voluntary leadership hours and written leadership logbook.

#### OTHER INFORMATION

This is a Level 3 course for students to add to their programme of study in Year 2. Students will be expected to undertake 30 hours of volunteering across the year in a range. The College can help in setting these placements up.



# TEXTILES



**In Textiles you will explore colour, texture and imagery using both traditional and unconventional materials.**

Our well-equipped specialist studio will allow you to explore and experiment with a wide range of techniques and materials. You will develop themes from your own personal experiences and observations, investigate ideas and research the work of other artists and designers. You will be taught by experienced and supportive tutors who have many years of experience in both teaching and creating.

From common starting points, you will progress in an individual direction. In the second half of Year Two, an externally set assignment gives you the opportunity to demonstrate all your creative abilities. Examples of project titles include 'Lost & Found', 'Transitions' and 'The Elements'

## YEAR 1

### Introduction to Textiles.

Projects covered will include:

- Texture and Surface
- Knit, Knot and Loop
- Plant and Print

## YEAR 2

### Personal Study and Personal Investigation

"Textiles was an area which really captivated me and which I wanted to learn more about. I have enjoyed being able to learn new techniques."

**Mia Rigg, ex Patcham High School**



## COURSE ESSENTIALS

### COURSE AVAILABLE

A Level

### ENTRY REQUIREMENTS

Standard advanced entry requirements

#### Plus

Grade 5 in GCSE Art or Textiles

#### Or

Merit or above in BTEC Level 2 First Certificate in Art and Design

#### Or

If GCSE Art, Textiles or Technology have not been taken, suitably qualified students with a good portfolio of work will be considered.

### HOW THE COURSE IS ASSESSED

60% coursework, 40% externally set assignment

### OTHER INFORMATION

Regular visits are made to galleries and museums in London, as well as trips to Barcelona, Venice, Florence, or Paris. Students have access to the Art Enrichment programme of visits and talks from practising artists.

# TRAVEL & TOURISM



If you are interested in becoming one of the professionals needed to plan and manage tourist attractions, work in holiday resorts, organise tours, run travel agencies and tour operators or work in passenger travel by land, sea and air, this course could be right for you.

The course is intensive and requires significant use of IT to conduct independent research. You will have opportunities to work in teams and individually. Our teaching staff have extensive experience of working within the travel industry and have numerous connections to individuals still working within the trade.

We also organise many trips and visits as well as inviting speakers from key industry organisations.

#### TOPICS INCLUDE:

- The United Kingdom Tourism Product (Exam)
- Worldwide Tourism Destinations (Controlled Assessment)
- The Dynamic Tourism Industry (Exam)
- Event and Itinerary Planning (Controlled Assessment)

"I chose Travel & Tourism because of my interest in research and travelling. What I have enjoyed most is learning about the different marketing and business elements of the tourism industry." **Tilly Gould, ex Downlands Community School**



#### COURSE ESSENTIALS

#### COURSES AVAILABLE

Single Level 3 Applied Diploma (equivalent to 1 A Level)

#### ENTRY REQUIREMENTS

Standard advanced entry requirements

#### HOW THE COURSES ARE ASSESSED

The course is assessed with: 50% external examinations, an exam in May in the first year and one in the second year.

50% controlled assessment. A series of timed tasks undertaken in the classroom during the two years of the course

#### OTHER INFORMATION

There are trips available as part of the course including occasional short European visits and longer stays in long haul destinations. We also offer the opportunity to attend a cabin crew day course run by a major international airline. There are some compulsory trips on which we base some research and students may need to make a payment of approximately £50 at the start of the course.



## LEVEL 2 COURSES



### CARING FOR CHILDREN

This course is taught in one year and if you are interested in working with children in the future, then this could be the course for you. The course covers: patterns of child development (0-5), promoting children's development through play and aspects of protecting children in a safe environment. An interest in children is essential. The course is all coursework based and is good preparation for those wishing to progress to a Level 3 course and apprenticeships.

**COURSE ESSENTIALS**

**COURSE AVAILABLE:**

NCFE CACHE Certificate 'Introducing Caring for Children and Young People' (Incorporating skills for working with young children and awareness of parenting skills, safeguarding and equalities and the importance of play).

**ENTRY REQUIREMENTS:**

Standard pre-advanced entry requirements

### CREATIVE MEDIA PRODUCTION

This course is ideal if you want to understand more about the Creative Media industry and how it works, whilst developing your own creative ideas, skills and abilities.

**WHAT WILL I STUDY?**

- Researching the TV & Film industry and how it is structured
- Developing ideas for moving image work
- Shooting and editing your own moving image work

This is a 100% coursework course and therefore assessment is continuous throughout the year. You must be committed to regular attendance, meeting strict coursework deadlines and working in groups. You will also be required to travel independently off-site without supervision for filming moving image work.

**COURSE ESSENTIALS**

**COURSE AVAILABLE:**

Level 2 Creative Media Production

**ENTRY REQUIREMENTS:**

Standard pre-advanced entry requirements

**plus:**

Prior successful experience of media or photography education OR a portfolio of still or moving images is essential.

### HEALTH AND SOCIAL CARE

This course is taught in one year and is equivalent to one GCSE. If you are interested in working within the health care sector in the future, then this is a stepping stone to a fulfilling career. The course covers a range of topics including: human lifespan development, equality in the health and social care sector, effective communication, food and nutrition. An interest in the care sector is essential. The course consists of one examined unit and three pieces of coursework.

**COURSE ESSENTIALS**

**COURSE AVAILABLE:**

BTEC First Award in Health and Social Care

**ENTRY REQUIREMENTS:**

Standard pre-advanced entry requirements







## PROTECTIVE SERVICES

Interested in a career in the Uniformed Protective Services? Study a range of organisations e.g. Police, Fire and Rescue, Ambulance, Army, Navy and others you may not have thought about. The course focuses on learning a wide range of skills important for Protective Service work including communication, teamwork, fitness and health, discipline and problem solving.

One unit is assessed in an exam. The other three are coursework using a range of reports, presentations, practical tasks and role plays. The course combines theory with active practical situations to give you experience and an insight into the work of the uniformed services with visits to and speakers from different organisations.

This course will enable you to market yourself well to employers or to continue onto a Level 3 Protective Services course.

Some of the units you will study include:

- Role and Work of Public Services
- Working Skills in the Public Services
- Employment in the Uniformed Public Services
- Health, Fitness and Lifestyle in the Public Services

### COURSE ESSENTIALS

**COURSE AVAILABLE:**  
BTEC First Award

**ENTRY REQUIREMENTS:**  
Standard pre-advanced entry requirements

## SPORT

If you are passionate about sport, physical activity, health or fitness then this is the subject for you.

We offer a broad range of courses encompassing areas of study from sport science, psychology and social issues, to sports coaching, leadership and fitness.

Students who do not meet the entry for an advanced programme can elect to study Sport at Level 2, this qualification comprises part of the Level 2 study programme and includes study of a range of topics from health and fitness, sports leadership, fitness training and practical sport.

### WHAT WILL I STUDY?

- Fitness for Sport and Exercise
- Practical Sport
- Training for Fitness
- Leadership in Sport

This course runs for one year and works as a pathway onto a Level 3 programme. Students can re-sit their Maths, if necessary, alongside this programme.

### COURSE ESSENTIALS

**COURSE AVAILABLE:**  
BTEC Level 2 Award

**ENTRY REQUIREMENTS:**  
Standard pre-advanced entry requirements





## GCSE COURSES

### PRE-ADVANCED LEVEL COURSES

## ART & DESIGN

This is a practical and creative one-year course where you will look at the work of a variety of artists and take inspiration from them to create your own art.

This course will develop your practical skills, your critical knowledge and make you a more confident artist. You will explore different themes and a variety of materials and processes (drawing, painting, printmaking, collage, sculpture and textiles). You are assessed on your ability to develop ideas, experiment with practical materials, record ideas and present successful outcomes.

There is a practical coursework unit and a practical examination. Most materials you need will be provided in the studio but there is a charge for these. Students need to be committed to spending time on art, as there will be weekly independent study tasks. Students who do well can progress to A Level Art, Textiles, 3D Design, Graphic Design or Photography.

### COURSE ESSENTIALS

**COURSE AVAILABLE:**  
GCSE Art & Design

**ENTRY REQUIREMENTS:**  
Standard pre-advanced entry requirements

**plus:**  
Grade 3 in GCSE Art, or Textiles (if taken)

**OR**

Provide a portfolio of your art/design/photography work at interview

## BUSINESS

The course will qualify you for a wide range of jobs as you will develop transferable skills which can be used in any one of the many businesses on the south coast. Previous students have found employment in areas as diverse as retail, leisure and creative industries, although a growing number are choosing to progress onto the next stage with the Level 3/A level course. The course is suitable for students considering continuing on to Business at Level 3 BTEC or A level.

You will study core topics including:

- Business in the real world
- Influences on business
- Business operations
- Human resources
- Marketing
- Finance

### COURSE ESSENTIALS

**COURSE AVAILABLE:**  
GCSE Business

**ENTRY REQUIREMENTS:**  
Standard pre-advanced entry requirements, including Grade 3/3 in GCSE Sciences and Grade 3 in GCSE Maths.

**ASSESSMENT:**  
The course is assessed through two equally weighted exams, lasting 1 hr 45 mins each, both taken in the summer term.

## ENGLISH

This new syllabus is a fast-track, one-year GCSE English Language course involving wider reading and building on written and spoken skills.

There are two units for this qualification:

### PAPER 1:

- A written exam (1 hour/45 minutes)
- 50% of GCSE/ 80 marks
- Analysing a literature fiction text and writing descriptively

### PAPER 2:

- A written exam (1 hour/45 minutes)
- 50% of GCSE/ 80 marks
- Analysis/comparison of 19th/20th/21st Century non-fiction texts and writing to persuade

Please note that studying at GCSE is an invitation to occasionally engage in and examine challenging and difficult topics and texts.

### NON-EXAM SPOKEN

**ASSESSMENT:**  
● Teacher-assessed in the autumn term.

(This mark is carried through from school, if you have already done it.) If you already have a Grade 4 in GCSE English Literature, you do not have to resit English Language GCSE, but it may be useful especially if you are considering going to university.

### COURSE ESSENTIALS

**COURSE AVAILABLE:**  
GCSE English Language

**ENTRY REQUIREMENTS:**  
Standard pre-advanced entry requirements



## MATHEMATICS

Mathematics qualifications improve your chances of employment considerably. Most jobs include some degree of measurement, money handling and mental arithmetic and a large number of jobs will require some use of skills such as percentages. You must study Maths GCSE if you do not already have a Grade 4 in GCSE Maths upon enrolment at college. This course can be taken alongside Advanced Level courses.

### COURSE ESSENTIALS

#### COURSES AVAILABLE:

GCSE Higher Level  
GCSE Foundation Level  
Number & Measure - Level 1

#### ENTRY REQUIREMENTS:

Standard pre-advanced entry requirements

Plus, for GCSE Higher Level - Grade 4 in GCSE Maths is required.

Must be taken for a specific and appropriate progression aim

## PHOTOGRAPHY

An introduction to photography which will develop your practical skills and your critical knowledge.

You will learn about camera technique and shoot on location and in studio shoots. This is a practical and creative one-year course and you will study the work of photographers. You will explore different themes (e.g. landscape and portraiture) and also experimental approaches to photography (e.g. photomontage and digital manipulation).

There is a practical coursework unit and a practical examination. You do not need your own Digital SLR camera as you will be able to use College cameras, but there is a charge for materials. Students need to be committed to photography as there will be independent study tasks to complete each week. Some students are able to progress to A Level Photography the year after.

### COURSE ESSENTIALS

#### COURSE AVAILABLE:

GCSE Photography

#### ENTRY REQUIREMENTS:

Standard pre-advanced entry requirements

#### PLUS:

Grade 3 in GCSE Art, Graphics or Textiles (if taken)

#### Or

Provide a portfolio of your art/design/ photography work at interview

## SCIENCE

If you need a Science or wish to progress to a Level 3 Science course, then these courses are for you. Most students will have followed a GCSE Science double award or single separate Science at school so these courses will have a large overlap. We offer either separate GCSE Biology or Trilogy Science (Double Science). For Biology you will carry out 8 practicals over the course and for Trilogy Science you will carry out 16.

### COURSE ESSENTIALS

#### COURSES AVAILABLE:

GCSE Biology  
GCSE Trilogy (Double) Science

#### ENTRY REQUIREMENTS:

Standard pre-advanced entry requirements including:  
2 x Grade 3 in GCSE Science  
Grade 3 in GCSE Maths





## GCSE COURSES

## OTHER COURSES

### PRE-ADVANCED LEVEL COURSES

## SOCIOLOGY

Sociology is the study of human society; it draws on a variety of viewpoints in order to understand the social world around us. In this course you will learn about how society shapes people's ideas and behaviour and you will relate this to your own experience of living in British society. You will also study how societies change over time and how societies differ across cultures. This course will help you to think critically about the world and explore different perspectives on society by drawing on sociological theories and research evidence.

You will study the following areas in detail: Family, Education, Crime & Deviance, Social Stratification, Sociological theory and Research Methods.

### COURSE ESSENTIALS

#### COURSE AVAILABLE

GCSE Sociology

#### ENTRY REQUIREMENTS

Standard pre-advanced entry requirements.

#### ASSESSMENT

Two exams

Paper 1: 1 hour 45 minutes, 50% of GCSE - Family, Education and Theory & Methods

Paper 2: 1 hour 45 minutes, 50% of GCSE - Crime & Deviance, Social Stratification and Theory & Methods

There is no coursework in GCSE Sociology

## CARBON LITERACY QUALIFICATION

We offer all our Year 1 Level 3 students the opportunity to study for The Carbon Literacy Qualification (CLQ) alongside their timetabled studies.

The CLQ is a nationally recognised, self-study, short course (approx. 10 hours) designed in partnership with the Manchester Metropolitan University, which you can choose to study during your own time.

The course will cover the essential scientific principles behind climate change and studied in the context of local, national and global concerns for the health of our planet, and what this represents for the future.

It will also cover how we can limit the damaging effects of human activity by examining examples of green initiatives and sustainability projects that mitigate, redress or reverse some of the worst effects of climate change witnessed in the past few decades.

The course will require you to think about your own actions and how you can offset your own and collective carbon footprints. The course is intended to provide a vision for future generations of young people who can be well informed and engaged with the issue so that you can consider effective long-term solutions to the current climate change predicament.

You will:

- Gain an overview of the basic science of climate change
- Understand the actions required of the Government, organisations and individuals to tackle climate change
- Improve your prospects for 'green jobs' either in the renewable energy industry or those that require you to have a basic knowledge about carbon footprints, environmental pollution or sustainability
- Achieve a Level 3 qualification which will make you better informed and look impressive on your CV or university personal statement

#### MODULES INCLUDE:

- Science of Climate Change
- Exploring Carbon Footprints
- A Zero Carbon World
- Our Wider Influence
- Taking Action





## ESOL SKILLS FOR LIFE

This course is right for you if you are studying GCSE or Advanced Level courses and need to improve your level of English. In these classes you will join a multinational group to work on the skills you need in order to be successful in your studies. You will take part in different activities including discussions, group work, presentations and conversation.

The course is designed to improve your reading, writing, listening and speaking skills and you will broaden and enrich your vocabulary and understanding of English grammar to prepare you for the ESOL qualification at the level which is appropriate for you. We have chosen topics relevant for life in the UK, both within the education system and life in general.

They include:

- Education and training
- Aspects of British culture
- Work and employment

### COURSE ESSENTIALS

#### ENTRY REQUIREMENTS:

You should have at least an intermediate level of English to join. At the beginning of the course you will complete a diagnostic test which will enable us to provide you with a programme of study most suitable for your level of English.

## EXTENDED PROJECT QUALIFICATION (YEAR 2 ONLY)

The Extended Project Qualification (EPQ) provides an excellent opportunity to independently research and write a dissertation on a topic of your choice. Throughout the project you will keep a log to plan and review your work. At the end of the project you will deliver a presentation. Your teacher will advise and mentor you, as well as help you develop your skills in organisation, research, presentation and reflection.

- You can pursue your topic interest in depth, perhaps in an area related to your higher education direction.
- The EPQ is graded A\*-E and is worth the equivalent of half an A Level (up to 28 UCAS points).
- Some universities will give lower offers to students taking the EPQ; others will provide additional funding.
- Employers see the EPQ as evidence of maturity and the ability to self-manage.

"I enjoyed the opportunity to research a new topic of interest. All of the hard work was worth it, as I have an extra qualification and gained new skills which will be useful at university. Learning how to research and reference was particularly useful. It was a great experience and I'm really pleased that I persevered with it."

**Student 2022-23**

## YOUNG ENTERPRISE SCHEME

This course will help you recognise and develop your enterprise skills. You will learn a range of skills associated with running a small business and develop your own capabilities through planning, implementation and evaluation of project work. You will set up and run a business of your own; from raising money, selling shares to making a product/providing a service, to winding up the business and sharing the profits out amongst shareholders. You'll be helped through the course by a Link Teacher and Advisor from the world of business. In the past, many companies have won awards and made respectable profits from their enterprises. If your business really is a success, then you can continue beyond the program date.

The course has no syllabus or exam. However, you will learn how to run a successful business, from marketing, production, logistics, finance to sales and human resources.

### COURSE ESSENTIALS

#### ENTRY REQUIREMENTS:

No specific entry requirements, however it is ideal for learners who'd like to:

- develop essential, transferable skills
- improve career prospects or progress to higher education
- further their own professional development
- experience running a small enterprise



BEYOND YOUR LESSONS

# VARNDEAN VALUES ENRICHMENT PROGRAMME



**Enrichment at Varndean is an essential part of the teaching and learning journey for all students and an overall contributor to your experience at College. Enrichment plays an essential role in allowing you the opportunity to develop transferable skills, access learning beyond the curriculum and contribute to the College community. In addition, enrichment provides you with the opportunity to build social links outside of the classroom and a platform to enjoyable and supported activities.**

When you enrol at Varndean College you will select an enrichment which will be added to your timetable. You are welcome to choose an enrichment that supports your subject choices or try something completely different, the choice is yours! Some of the enrichment courses have a qualification attached and allow you the opportunity to access this alongside your studies. Other enrichments are focused on development outside of structured lessons / assessment aims. Whichever you choose will be a compulsory part of your timetable as it will not only benefit you during your time at College, but also be a valuable asset ahead of interviews, university applications and progression opportunities.

The Enrichment programme at Varndean College is called 'Varndean Values - Enrichment'. 'Varndean Values - Enrichment' offers a bespoke extra-curricular experience for every student. Enrichments are categorised via the following headings to help you focus on your individual pathway.

ENRICHMENT

VARNDEAN  
CREATIVE

VARNDEAN  
ACTIVE

VARNDEAN  
PERSONAL  
DEVELOPMENT

VARNDEAN  
COMMUNITY

VARNDEAN  
PROGRESS



Shodi Hamdamov

## VARNDEAN VALUES ENRICHMENT PROGRAMME

ENRICHMENT



Ghada Ghasib



In addition to the opportunities within the enrichment sessions themselves, you will also receive certificates of attendance and achievement. This will indicate to future employers or training institutions that you have completed an enrichment programme that enhanced and complemented your studies and positively contributed to the College community.

There are a wide variety of staff-led enrichments and students are also invited to propose their own enrichment, with staff support, to develop leadership skills. The programme changes annually to reflect student interests and therefore some of the enrichments offered below may be subject to change.

### VARNDEAN CREATIVE

- Art & Design
- Creative Writing
- Dance
- Film-Making
- Funk Band
- Life Drawing
- Introduction to DJing
- Student Directed play

### VARNDEAN ACTIVE

- Basketball
- Duke of Edinburgh
- Football
- Netball
- Rugby
- Russell Martin Football Academy
- Sport Social
- Sport Leagues
- Yoga

### VARNDEAN PERSONAL DEVELOPMENT

- Meditation
- Peer & Academic Mentors
- Space to Connect
- The Social Space
- Managing your Money
- Well-Being
- Young Carers







## VARNDEAN COLLEGE STUDENT UNION

### Making Students Heard ...

The Varndean College Student Union represents the student body of the college, putting forward any suggestions that students would like to see implemented in college, as well as becoming involved in:

- Freshers' Fair
- Student run events around college
- Welfare
- Campaigns and charities
- Societies around college
- Environmental issues
- Enrichment
- Basically, anything related to students and college life!

### Why should students join the SU Executive?

Students have the chance to represent their peers and help bring about any changes they would like to see. The SU Executive ensures that the College maintains its strong student voice. It teaches students many transferable skills, such as democracy and teamwork, and is a great thing to have on a CV, UCAS personal statement, or job application.

All students are directly part of the Student Union and everyone is encouraged to participate in the student elections, not only if they wish to gain a position on the Student Union Executive, but also because participating in the campaign is fun!

**You can follow the Student Union on Instagram**  
[varndean\\_su](#)

STUDENT UNION



## VARNDEAN COMMUNITY

- Carbon Literacy Qualification
- Citizens UK
- Climate & Environment Action Group
- Ethnicity & Identity Discussion Group
- Feminist Society
- Law Society
- Philosophy Society
- Politics Society
- Pride (LGBTQ+ Group)
- Student Union

## VARNDEAN PROGRESS

- Aspire - Oxbridge Support
- Art Foundation Support
- Audition Preparation
- Chemistry Society
- Employability Skills
- Maths Club
- Medicine / Veterinary Science / Dentistry Support
- Work Experience
- Young Enterprise



## SPORTS PROGRAMMES & ENRICHMENT

### SPORTS PROGRAMMES & ENRICHMENT

Vardean College has a commitment to providing sporting opportunities for all students at the college. There are two pathways for students to access these opportunities; through our enrichment programmes or by representing the college as part of a college team.

The sports programmes offer the opportunity for students to receive coaching in their selected sport whilst studying at the college. Students will benefit from expert coaching, allowing them to develop their sporting performance, technical skills and tactical understanding. Fixtures & training take place within the college day, usually on a Wednesday afternoon. These programmes run in conjunction with local clubs providing an onward pathway for students to continue with the sport in the community and compete on a local, county and regional level.

There are opportunities available in the following sports:

- **Girls football**
- **Girls netball**
- **Boys rugby**
- **Boys basketball**

### BOYS FOOTBALL ACADEMY

Our unique football performance programme allows students to receive high level training and competition at county, regional and national level alongside their studies. The 1st XI represents the college in the AOC South East league, with the 2nd XI competing in the Sussex Schools County League. Both teams also play in numerous cup competitions locally and nationally, meaning that students will have a range of opportunities to showcase their abilities. The programme is delivered in conjunction with the Russell Martin Foundation, with UEFA qualified coaches holding experience of playing and coaching in the professional game.

Recent seasons have seen numerous players selected for the Sussex Schools boys squad, four players became England College Internationals and one player represented England Schools boys, going on to gain a professional contract at Brighton & Hove Albion. Recent successes have included Sussex Schools 1st XI league title and SSFA County Cup finalists. In 2022 the 1st XI reached the last 16 of the ECFA National Cup and the quarter finals of the ESFA National Cup and are AOC South East regional champions.

The programme includes:

- Full time training programme on grass and 3G pitches
- Strength and conditioning programmes with excellent gym facilities onsite
- The opportunity to study for the FA Level 1 coaching certificate
- Links and partnerships with semi-professional & professional clubs

The sports enrichment offer provides students with many opportunities to pursue their interests at a formal, yet recreational level. The college runs a variety of clubs and societies through the college week including; table tennis, badminton, gym enrichment, yoga, Zumba, social football, mixed volleyball and mixed basketball. Students are actively encouraged to speak to the PE Department if there is an interest in a particular area.





## DUKE OF EDINBURGH AWARD AT VARNDEAN

At Varndean we like to do things differently! The Duke of Edinburgh Award comprises three levels, Bronze, Silver and Gold and Varndean College is proud to offer the Gold Award for all of students who have attained their 16th birthday. No matter whether you are a complete novice or have already completed Bronze and Silver, we welcome all students keen to complete the requisite period of engagement in the different sections (Skills, Volunteering, Physical and Residential) as well as providing training and supervision for the expedition section of the Award.

In a departure from other colleges in the area, we run the practice element of the expedition in the Brecon Beacons, usually at the end of March, with the assessed portion organised in Dartmoor at the end of May. Participants receive tailor-made training during their compulsory Enrichment lessons by a qualified and experienced tutor, who organises and supervises all elements of the expedition. Along with expert training, participants are kitted out with new group kits (tents, cooking stove, emergency equipment) to help them complete their expedition. Whilst they are required to provide their own personal kit, there are also financial options available as well as personal kit for hire.

Assistance and mentoring is also available for participants as they progress through the other sections of the Award and

students can choose a separate enrichment activity that will directly count towards their skill, physical or volunteering sections!

### YEAR 1

#### Induction

Students sign up via the Enrichment Programme portal and after paying a small fee to go towards funding and supervision of the expedition, there is an orientation meeting along with individual discussions to help with choosing appropriate Sections.

Once participants have chosen their skill, volunteering and physical sections, they then attend an Enrichment Programme at the college that will help with completing either section. There are many programmes to choose from; ranging from crochet to criminal law or film appreciation and from rugby to table tennis.

#### September - January

Our Gold Award students continue with their chosen Enrichment programme, checking in with their supervisor to make sure they're on track.

#### January - May

This is the expedition phase of the Award. Students will use their Enrichment time to complete the training necessary for them to travel safely. Lectures and practical sessions on navigation, first aid, nutrition, appropriate kit, use of stoves and campcraft will run alongside map reading and preparation for the expedition.

#### Expedition Dates

Practice Expedition (4 days – end of March) - Brecon Beacons  
Assessed Expedition (5 days – end of May) - Dartmoor

### YEAR 2

Students in their second year of study at Varndean will be expected to continue with their sections as well as complete their residential section independently. Ongoing advice and assistance will be available and students will have until their 24th birthday to complete the Award. Once the Gold Award is completed, participants can look forward to impressing future employers with clear evidence of grit and determination as well as enjoying a visit to Buckingham Palace to receive their award in person from Prince Edward!



# HERE TO HELP YOU

Moving on to college is an exciting but sometimes challenging time. At Varndean College, we have an experienced team of staff to help you manage this change and guide you through your journey whilst at college.

HERE TO HELP YOU

## HEALTH & WELLBEING SERVICE

The Health & Well-being Service will help direct you to the most appropriate support, including:

### Well-being Zone

Our Well-being zone actively promotes 'Our Well-being Matters' teaching P.A.U.S.E through a variety of well-being strategies that enhance learning, alleviate anxious thoughts and boost a student's ability to build more resilience. They can offer: check in, drop in and 1:1 support. Students can refer themselves by emailing [wellbeingzone@varndean.ac.uk](mailto:wellbeingzone@varndean.ac.uk). They also offer different Wellbeing Enrichment Groups: Wellbeing for Academic Study and Exam Distress and Befriend your Autonomic Nervous system. We also offer a medical profile for those students with a medical condition.

### Therapy Team

Our Therapy team consists of qualified therapists offering short term counselling and therapeutic work. The team's Mental Health Practitioner can also liaise with external agencies such as CAMHS to help support students. The Therapy Team also offer check-ins for students on the counselling waiting list or those who may need non-counselling support. All the team are experienced at working

with students in confidential 1:1 sessions. We even have a therapy dog, Wilfred, who can befriend students during check-ins too!

### Peer Mentoring/Academic Mentoring

Mentors are students who have been trained to provide one-to-one support to other students. Students who may be feeling overwhelmed, lonely or would just like to talk to other students can request to meet a Peer Mentor. Students who need support with their studies can request an Academic Mentor to support them with their learning. Mentors have been trained in listening skills and can provide information about where students can access further support.

### Mental Health Champions

These are students who take part in the Mental Health Champions project with the YMCA Right Here and Brighton & Hove City Council. The project is student led action and students aim to develop bespoke anti-stigma mental health campaigns to promote positive mental health at college.

**If necessary, our Well-being Coordinator can also direct you to other specialist support services which are available both inside and outside of college.**

## ADDITIONAL SUPPORT

Please let us know on your application form if you have Additional Needs. We will then work with you to create an individual support plan. We provide a range of support that is tailored to suit the needs of the individual student and provides a quiet and friendly atmosphere for students to work in.

Varndean College is committed to inclusive education and seeks to ensure that every student is given the opportunity to achieve their potential. The Additional Support team works with subject teachers to ensure that the individual learning needs of all students are identified and met. Support for students with Special Educational Needs/Disability (SEND) includes support for students with additional needs, such as Dyslexia, Dyspraxia, Autism, ADHD/ADD, physical and





sensory needs and other neuro-diverse and mental health needs. Our goal is to support students to become as independent as possible and give them the tools they need to succeed at college and in life.

### Supported Study Sessions

The aim of Supported Study Sessions is to enhance independent learning and develop study skills. Students can bring their coursework and work independently with access to a support tutor. Support can include help with essay writing, effective note-taking, study skills and organisational skills. The sessions are small, with a maximum of ten students and are available every day in the Additional Support Department.

### Exam Arrangements

Students with significant and persistent learning needs who need access arrangements in exams should disclose their need on their application form. Where appropriate, and subject to the timely disclosure of need, they will be invited to an assessment session in the Additional Support Department in good time for their exams. Students will be allocated access arrangements in line with current JCQ regulations and guidance.

### EHCPs

In-class support and 1:1 support sessions are sometimes provided to students who have EHCPs. This support will be fully discussed, agreed and reviewed with students on an individual basis. Local Authority Consultation is undertaken to plan support for students with Education, Health and Care Plans (EHCPs).

## PERSONAL TUTORS

Weekly meetings, including group sessions and individual progress reviews, take place with your Personal Tutor to help you get the most out of college. We support you to achieve your goals and develop the independence and resilience you will need to be successful in life and prepare you for your next step, whether that be employment, apprenticeships or higher education.

## FINANCIAL MATTERS

If you are under 19 when you start your course, you will not be charged tuition fees.

We will lend you textbooks and equipment without charge; you will be asked to pay a £60 deposit, £50 of which is refunded when you return any textbooks and equipment in good condition. We do not provide stationery.

The following subjects will make a charge at the start of the course for materials which you will keep; 3D Design, Art, Craft & Design, Creative Media, Drama, Graphic Design, Performing Arts, Photography and Textiles. Also, if you are studying Education & Childcare (Level 3) or Health and Social Care Level 3 (Double), you will need to pay for a DBS check. Students can apply for help with these costs if they fall into a priority group for the Vulnerable Bursary or Discretionary Learning Grant; eligible students will have these payments automatically waived.

### Financial Support

There are three categories of support which students may apply for:

- Means-tested Vulnerable Bursary of £1,200 per year

“ONE OF THE MAIN THINGS I ENJOYED ABOUT VARNDEAN WAS THE ADDITIONAL SUPPORT ROOM. THIS WAS BECAUSE IT WAS A NICE AREA TO GO IF YOU FELT OVERWHELMED OR STRESSED JUST TO RELAX OR DO SOME WORK.”

**Zachary Kent, ex Peacehaven Community School**

- Means-tested Discretionary Learning Grant (DLG), which can be used for college-related costs such as travel, essential trips and the subject contributions described above.
- Means-tested Free College Meals Programme. Eligible students receive £5.00 per day loaded onto their student college card based on each timetabled day. They will also be automatically awarded the Discretionary Learning Grant.\*

## WELFARE SERVICE

The Welfare Service, based in the Tutorial block, offers a supportive information service to help you with finance, health, accommodation, travel and any other practical difficulties that could affect your study. If necessary, our Welfare Officer can also direct you to other specialist support services which are available both inside and outside of college.

**For further information, contact our Welfare Officer, Daniela Sramova (email: [dss@varndean.ac.uk](mailto:dss@varndean.ac.uk), Tel: 01273 508011 ext 110) or alternatively visit our website [www.varndean.ac.uk/welfare/](http://www.varndean.ac.uk/welfare/)**



HERE TO HELP YOU

\* Figures correct at time of going to print.



# CAREERS AND STUDENT PROGRESSION

## CAREERS

**Vardean College prides itself in its excellent progression rate and offers extensive support to all its students.**

The Careers Department provides support to students, parents, staff and employers who choose to partner with the college by supporting our curriculum areas with employer-led activities. We are open every college day and also provide help and guidance to students on the exam results days in August and through the UCAS clearing process if needed.

All students are able to book an appointment to see a Level 6 qualified Careers Adviser for 1:1 help. Information, advice and guidance is given to help students make choices about their next steps whether that be applying for

an apprenticeship, university or planning a structured 'gap year'.

Throughout their time at Vardean, students will receive timely careers related support which is delivered through their weekly tutorial sessions. Materials are updated annually and students are able to provide feedback to ensure the Careers team are meeting student needs.

Through the 'Careers Spotlight' programme, all curriculum areas invite employers in to talk to students about their work and provide information on what it is like to work in that occupational sector - this is then directly linked to the subjects the students are studying helping them see the relevance of what they are studying to the workplace and

helps them identify the transferable skills their subject gives them.

The Careers team organise many events for students including the annual Apprenticeships Fair, UCAS Fair, Personal Statement Writing Day, the Vardean Internship Programme (VIP) and the University Information Day held on campus at University of Sussex.

We structure our careers support and delivery adhering to the 8 Gatsby Benchmarks and ensure all stakeholders are able to provide feedback to help us inform and improve our work.

419

STUDENTS WITH UNIVERSITY OFFERS IN 2022



## THANK YOU

We would like to thank every local and national organisation that has supported Vardean College over the last academic year, whether that is by visiting the College or by offering work experience. Your support helps us make sure our students are well prepared for meeting the demands of the 21st century workplace.



IN 2022 **94.8%**  
OF FORMER VARNDEAN  
COLLEGE STUDENTS  
WHO ATTENDED  
A RUSSELL GROUP  
UNIVERSITY  
GRADUATED WITH  
A FIRST OR UPPER  
SECOND CLASS  
HONOURS



## UNIVERSITY DESTINATIONS 2021/22

	2021	2022		2021	2022		2021	2022
Aberystwyth		2	Falmouth	3	6	Point Blank Music School		1
Aca Contemporary Music		1	Glasgow	1	3	Portsmouth	9	8
Anglia Ruskin		1	Gloucester	1	3	Queen's Uni, Belfast		1
Arts University, Bournemouth	1	3	Goldsmiths	3	3	Queen Mary College, London	2	4
Aston	1		Greater Brighton Met	1	1	Ravensbourne		1
Bangor	2	1	Greenwich	1	2	Reading	4	3
Bath Spa	5	5	Hertfordshire	2	1	Roehampton		1
Bath	2	2	Hull	1	2	Royal Holloway, London	4	3
Bedfordshire	1	1	Imperial College London	2	1	Salford		1
BIMM	3	1	Institute of Contemporary Music		1	Sheffield	4	5
Birbeck	1	1	Keele	2	1	Sheffield Hallam	2	1
Birmingham		1	Kent	5	13	SOAS		1
Birmingham City	2	2	Kings College London	2	2	Southampton	9	6
Bolton	1	2	Kingston	4	7	Southampton Solent	4	7
Bournemouth	14	7	Lancashire (Uni of Central)	2	1	South Wales	2	2
Brighton	27	47	Lancaster	1	3	Staffordshire		1
Bristol	18	9	Leeds	10	5	St George's, London		1
Bristol UWE	20	20	Leeds Arts Univeristy	1	1	Strathclyde		2
Brunel		1	Leeds Beckett	3	3	Suffolk		1
Cambridge	3		Leeds Trinity	1		Surrey	5	2
Canterbury Christ Church	2	3	Leicester	1	2	Sussex	51	58
Cardiff	4	4	Lincolnshire	3	2	Swansea		1
Cardiff Met	1		Liverpool	4	4	UCFB (Football)		1
Chichester	3	15	Liverpool John Moores	3	2	University College London	6	6
Chichester College Group	1	1	London School of Economics	1	1	University College of Osteopathy		1
City, University of London		2	London South Bank	2	3	University of Law		1
Cornwall College	1		Loughborough	1	4	University of the Arts, London	4	3
Courtauld Institute of Art			Manchester	8	8	University of West London		2
Coventry	1		Manchester Metropolitan	5	12	Warwick	4	1
University of Creative Arts	1	1	Middlesex	1		West Dean College of Arts		1
De Montfort	1	1	Northampton	1		Westminster		4
Derby		1	Northumbria	1		Winchester	4	2
Durham	5	3	Norwich University of Arts	1	1	Wolverhampton		1
East Anglia	3	5	Nottingham	7	2	Worcester		2
East London	4		Nottingham Trent	6	2	Writtle University College	1	1
Edinburgh	5	3	Oxford	1	4	York	3	5
Essex	5	2	Oxford Brookes	1	5			
Exeter	4	2	Plymouth	3	6			

DESTINATIONS

# WHERE ARE THEY NOW?

Take a look at where some of our past students are now and the interesting and diverse career paths they are following.



TED JEFFERY

## DIGITAL PRODUCER, TALKRADIO

**Studied:** English Language, Sociology, Creative + EPG (2015-17)  
**Progression:** BA in Journalism (2:1), City, University of London (2017-20), MA, Diplomacy & Foreign Policy (Dist), City, University of London (2020-21)

Ted studied at Vardean between 2015-2017, during which time he was also a radio presenter and ward volunteer for Southlands Hospital Radio whilst also gaining work experience at local media company, David Andrews Media. He graduated with a 2:1 in Journalism from the City University of London, whilst also working as a freelance journalist for many different platforms such as Tremr, The Backbencher, The Distiller and Wolves of Westminster. He was a regular guest on local Latest TV News, where he got his first taste of being a political pundit, offering his opinion, analysis and predictions on the weeks' news.

This led to an intern for Frontline Club Charitable Trust where he assisted with the organisation of events and his own podcast with BBC Political Editor, Nick Robinson, gaining 1000+ listeners within the first week. Further freelance contracts followed working for Sky News on the 2019 General Election, C&S Earthquake, Politics Home, Rory for London, Comment Central, Global Vision UK, Reach plc and Blue Sky Digital Consultancy.

In 2021, Ted completed a Masters in Diplomacy and Foreign Policy at the City University of London, achieving a Distinction. He became a freelance political writer/editor for various political platforms and in 2022 became a Producer at TalkRadio, where he now works on Julia Hartley-Brewer's breakfast show on both TalkTV and TalkRadio.

FIJI SAPARA



**Studied:** Philosophy, English Literature, Spanish (2016-18)  
**Progression:** Law, University of Surrey (2018-22)

Fiji studied Philosophy, Spanish and English Literature, but since taking up a Law degree at the University of Surrey in 2018, has fallen in love with the legal industry and Law as a subject. She spent the first two years of her degree consistently seeking methods to increase her exposure to a career in law and spent valuable time in court alongside barristers, as well as a week in the London office of the Financial Conduct Authority. She even created her own legal blog to inspire and help out aspiring solicitors.

Fiji was offered the opportunity to become an ambassador of FirstGens, a scheme which supports and elevates students who are the first in their family to attend university, which has inspired her to not only work hard but also to help out others when she can.

In 2020 she took a placement year working at a commercial and corporate law firm in Sussex and in 2021 was accepted onto the Aspiring Solicitors Coaching programme, whilst also volunteering as a tutor for CrimInox UK, a national registered charity delivering distance-learning to serving prisoners and ex-offenders. She completed her Bachelor of Laws – LLB in 2022 and is now

currently working as a Compliance Assistant at international law firm, Bird & Bird, in London.

Fiji said: "I joined Vardean after a year of feeling entirely lost career-wise, but attribute my subsequent success to the College and its teachers. I studied English Literature, Philosophy and Spanish and was surprised at how transferable many of the skills I learned in these subjects are to Law. Years 12 and 13 are pivotal for your future. You may not know exactly what you wish your career to be, but it's important to study somewhere that will offer you guidance and support. My time at Vardean felt like the large push I needed to increase my confidence and this allowed me to seamlessly go on to university and build a clearer picture of who I wanted to be. My life has taken leaps and bounds in directions I never thought possible."



**MAJOR  
ALEXANDER  
NICHOLAS**

**OFFICER COMMANDING,  
THEATRE LOGISTIC  
REGIMENT, THE BRITISH  
ARMY**

**Studied:** Maths, Chemistry, Human Biology (2001-2003)

**Progression:** BSc in Science in Logistics, Aston University (2009-12) MSc in Military Technologies & Applied Sciences, Cranfield University (2023)

Alex initially wanted to follow in the footsteps of his mother and sister and become a chiropractor. However, having always had an affinity for the military, before finishing his A Levels at Varndean, decided to apply to The British Army and achieved a place as an Officer Cadet at the Royal Military Academy, Sandhurst. He joined the Royal Military Academy in 2005 and following a year's training, he

became a Logistics Officer with the Royal Logistics Corp and later became Troop Commander in the Supply Regiment, managing up to 100 British Army soldiers and being deployed to Iraq.

In 2008 he was made Platoon Commander at ATR (Winchester) delivering training to the regular and reserve recruits, and in 2012 promoted to Squadron 21C/ Operations Officer, leading and planning combat logistic patrols in Afghanistan. From 2014-16, Alex then became Regimental Signals Officer for the Theatre Logistics Regiment and from 2016-18, Resource Manager at the Royal Military Academy Sandhurst, delivering support to over 1000 military students. 2019 saw him take on the role of Capability Manager at the British Army HQ and from June 2021 he has been Officer Commanding of



a Headquarters Squadron within a Theatre Logistic Regiment in the Royal Logistics Corps, where he commands a squadron of 160 officers and soldiers.

Alex says: "Achieving a place at the Royal Military Academy at the age of 18 was quite a feat and only made possible with the educational nurturing I received at Varndean College. Whilst employed by The British Army I have continued with my academic studies and studied for a MSc in Military Technologies and Applied Sciences, none of which would have been possible without the academic foundations laid down by Varndean."

**WHERE ARE THEY NOW?**

**Studied:** International Baccalaureate Diploma (2016-18)

**Progression:** PPE, King's College London (2019-22)

Monica went on to study Philosophy, Politics & Economics at King's College, London after studying the IB Diploma at Varndean College. In 2018, she was runner up in the Politics, IR and Economics category of the New College of Humanities' essay writing competition, in which only 27 students were shortlisted out of 1,800 entries, and in 2019 gained work experience working for Green Party MP, Caroline Lucas.

After leaving Varndean, Monica was hired by Sussex University to conduct a year-long research project, in which she researched the role of digital platforms in transforming youth employment opportunities in the UK. She presented her findings on an online virtual debate panel hosted by the Economic and Social Research Council (ESRC) as well as the Amsterdam SASE Conference 2022.



**MONICA  
RICHARDS**

In 2020 Monica was a winner in the NCS Democratic Voice competition, tackling youth loneliness during the pandemic, as well as volunteering for the 93% Club and Project Access that seek to tackle educational inequality in the UK.

Whilst at King's College, Monica also founded and led the Benzo Research Project, looking into young people's recreational use of benzodiazepine across the UK, in which she led a team of 50 volunteers and received various grants from KCL to run nationwide social media campaigns and gain recognition from national and

international media, such as Sky News, ITV and The Independent.

She was voted King's College 'Student of the Year 2022/23 in the Department of Political Economy.

She now works for the Sussex Partnership NHS Foundation Trust as a Public Advisor, co-creating and editing the Sussex Children and Young Peoples' Emotional Wellbeing and Mental Health Strategy 2022-2027 and has been selected by the Civil Service Fast Stream as a Generalist starting September 2023.

Monica said: "The IB provided both breadth and depth into the disciplines offered and openly encouraged individual thinking – the perfect stepping stone for university. I'd recommend taking a range of subjects to keep your options open: there is nothing more rewarding than cultivating an interdisciplinary mindset during your education. I also couldn't emphasise more the importance of maintaining your mental health and wellbeing throughout your studies, something Varndean College provides outstanding support with."




# GETTING TO VARNDEAN

GETTING TO VARNDEAN

Getting to Varndean College is easy. If you live in Brighton or Hove, the College is served by the 5B bus service which stops directly outside the main entrance. For those students who travel from further afield, the journey is easily manageable due to the wide range of connecting bus services or rail services available.

## TRAVELLING TO COLLEGE FROM WITHIN BRIGHTON AND ITS SURROUNDING DISTRICTS

 You can either take the direct 5B bus service or alternatively most other bus routes will take you into Brighton town centre where you would then change onto the 5B service from there.

### FROM HOVE/HANGLETON

**5B** A frequent service running approximately every 10 minutes from Hangleton, via Hove and Brighton and directly to Surrenden Road where it stops outside the College.

### FROM MILE OAK

**1/1A** 1/1A Run from Mile Oak, via Portslade to Brighton town centre where you can change onto the 5B.

**55** 55 Runs from Mile Oak and Hangleton to Hollingbury, stopping outside the College. However, this is a limited service, only departing Mile Oak between 6.40am – 7.17am. There is also only one return service leaving Varndean at 4.28pm to Churchill Square only.

### FROM SOUTHWICK

**46** Runs from Southwick, via Portslade, Hove and Brighton town centre up to Ditchling Road.


### FROM KEMP TOWN AND QUEENS PARK

**94** School bus service operating in early morning and in afternoon only between Queens Park district and Dorothy Stringer School (Loder Road). Or alternatively take a bus into Brighton town centre and change.

### FROM NEWHAVEN/SEAFORD

**12** **12A** Runs via Peacehaven, Saltdean and Rottingdean into central Brighton. You would then need to change onto the 5B bus from the town centre.

## TRAVELLING TO COLLEGE FROM FURTHER AFIELD

 The closest train station to the College is Preston Park Station, which is approximately a 15-minute walk away. Various services stop at this station, some of which are direct services.

### FROM THE WEST

From Worthing, there is an hourly direct service to Preston Park via Lancing, Shoreham, Portslade and Hove with the journey time from Worthing taking only 20 minutes. There are also many additional services via changing at Brighton Station.

### FROM THE NORTH

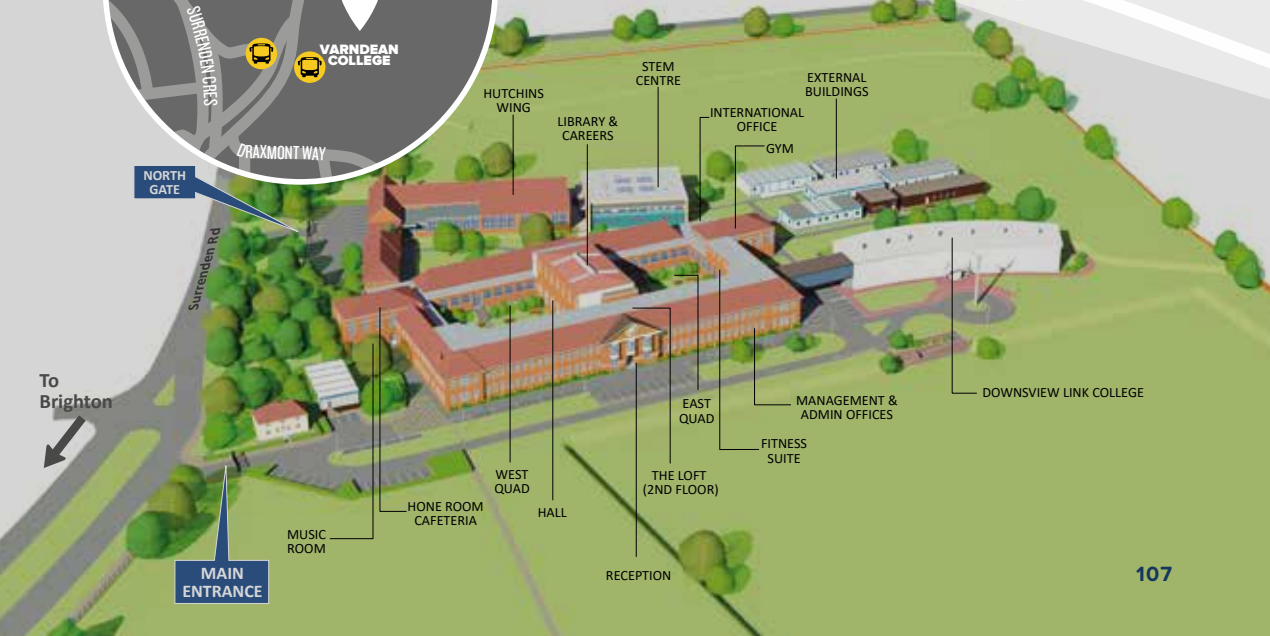
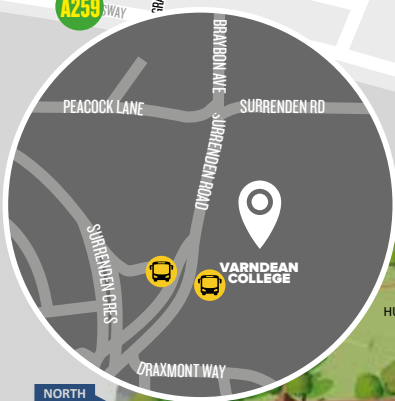
From Haywards Heath, there are direct trains calling at Wivelsfield, Burgess Hill and Hassocks. The journey time from Haywards Heath is approximately 16 minutes.

### FROM THE EAST

From Lewes, there are trains stopping at London Road station. London Road station is close to bus services to the college, or a 15-minute walk should you prefer.

Please check the following travel websites for exact times and latest information:

- [www.buses.co.uk](http://www.buses.co.uk)
- [www.nationalrail.co.uk](http://www.nationalrail.co.uk)
- [www.southernrailway.com](http://www.southernrailway.com)
- [www.thameslinkrailway.com](http://www.thameslinkrailway.com)





# COURSE INDEX

	SUBJECT	QUALIFICATION	LEVELS			Page
			2	3	Other	
	3D Design	A Level		●		19
<b>A</b>	Art	A Level		●		20
	Art & Design	GCSE	●			90
<b>B</b>	Biology	A Level		●		21
	Biology (Applied Human Biology)	BTEC Level 3 (Single)		●		22
	Business Studies	GCSE	●			90
		A Level		●		24
	Business (Vocational)	BTEC Level 3 (Single)		●		25
<b>C</b>	Carbon Literacy Qualification	Carbon Literacy Qualification			●	92
	Caring for Children	NCFE CACHE Certificate	●			88
	Chemistry	A Level		●		27
	Classical Civilisation	A Level		●		28
	Computer Games Development	BTEC Level 3 (Single)		●		30
	Computer Science	A Level		●		32
	Craft & Design	T Level		●		33
	Creative Media Production	CTEC Level 2	●			88
		CTEC Level 3 (Single)		●		34
	Criminology	Educas Level 3 Diploma		●		35
<b>D</b>	Dance	BTEC Level 3 (Single)		●		36
	Drama & Theatre Studies	A Level		●		38
	Duke of Edinburgh				●	99
<b>E</b>	Economics	A Level		●		39
	Education & Childcare	T Level		●		41
	Engineering	CTEC Level 3 (Single)		●		42
	English	GCSE	●			90
	English Language	A Level		●		44
	English Literature	A Level		●		45
	English Language & Literature	A Level		●		46
	Environmental Science	A Level		●		48
	ESOL				●	93
	Extended Project Qualification	Extended Project Qualification			●	93
<b>F</b>	Film Studies	A Level		●		49
	Forensic Science & Criminal Investigation	BTEC Level 3 (Double)		●		50
	French	A Level		●		51
<b>G</b>	Geography	A Level		●		52
	German	A Level		●		53
	Graphic Design	A Level		●		54
	Gym Instructing	Level 2 Certificate	●			83
<b>H</b>	Health & Social Care	BTEC First Award	●			88
		BTEC Level 3 (Single or Double)		●		55

# COURSE INDEX

	SUBJECT	QUALIFICATION	LEVELS			Page
			2	3	Other	
<b>H</b>	History - Early Modern	A Level		●		56
	History - Modern	A Level		●		57
	History of Art	A Level		●		58
<b>I</b>	Information Technology	BTEC Level 3 (Single)		●		59
	International Baccalaureate	IB Diploma		●		60
<b>L</b>	Law	A Level		●		63
	Law (Applied)	BTEC Level 3 (Single)		●		64
<b>M</b>	Mathematics	GCSE	●			91
		A Level		●		65
	Mathematics - Further	A Level		●		65
	Media Studies	A Level		●		66
	Music Technology	A Level		●		67
<b>P</b>	Performing Arts	BTEC Level 3 Diploma		●		68
	Philosophy	A Level		●		69
	Photography	GCSE	●			91
		A Level		●		70
	Physical Education	A Level		●		71
	Physics	A Level		●		72
	Politics	A Level		●		74
	Protective Services	BTEC First Award	●			89
		BTEC Level 3 (Single)		●		75
	Psychology	A Level		●		76
	Psychology (Applied)	BTEC Level 3 (Single)		●		77
	<b>R</b>	Russell Martin Football Foundation			●	98
	<b>S</b>	Science	GCSE Biology	●		
		GCSE Trilogy (Double Science)	●			91
Sociology		GCSE	●			92
		A Level		●		78
Spanish		A Level		●		80
Sport		Level 2 Award	●			89
Sport		BTEC Level 3 (Single or Double)		●		81
Sport & Exercise Science		BTEC Level 3 (Double)		●		81
Sports Leaders		Level 3 Certificate		●		84
Sport Performance Programmes					●	98
<b>T</b>	Textiles	A Level		●		85
	Travel & Tourism	WJEC Level 3 Diploma (Single)		●		86
<b>Y</b>	Young Enterprise Scheme			●	93	





Varndean College  
Surrenden Road  
Brighton, BN1 6WQ

Tel: 01273 508011

[office@varndean.ac.uk](mailto:office@varndean.ac.uk)

[www.varndean.ac.uk](http://www.varndean.ac.uk)



**Varndean College**



**@varndeancollege**



**Varndean College**



**@varndean**