



# Varndean

College Brighton & Hove



2025

TRANSFORMING LIVES THROUGH EXCEPTIONAL EDUCATION



# OPEN EVENTS



## COME ALONG AND MEET US AT ONE OF OUR OPEN EVENTS

### OPEN DAY

**Saturday 28 September 2024**  
11am - 2pm

### OPEN EVENINGS

**Wednesday 6 & Thursday 7 November 2024**  
5pm – 8pm

## VISIT US TO:

- find out more about our superb academic track record and the outstanding student support we provide
- find out more about the extensive range of courses we offer
- talk to staff and students to discover what an exceptional place Varndean College is to study at
- find out more about college life and becoming part of the 'Varndean community'
- look around our beautiful and unique campus

### INTERNATIONAL BACCALAUREATE PRESENTATION

**Tuesday 8 October 2024**  
Doors 6pm, Talk 6.30pm - 7.45pm

WELCOME FROM THE PRINCIPAL	4
WHY CHOOSE VARNDEAN	5
CHOOSING YOUR STUDY PROGRAMME	6
COURSE LEVELS EXPLAINED	7
ENTRY REQUIREMENTS	8
THE APPLICATION PROCESS	9
YOUR TIMETABLE	10
INTERNATIONAL STUDENTS	11
OUR ASPIRE PROGRAMME	12
STEM AT VARNDEAN	14
COURSES AT A GLANCE	16

## COURSES

ADVANCED (LEVEL 3) COURSES	21
FOUNDATION (LEVEL 2) COURSES	58
OTHER COURSES	62
ENRICHMENT AT VARNDEAN	64
STUDENT UNION	67
STUDENT SUPPORT & WELL BEING	68
FINANCIAL MATTERS & WELFARE	69
CAREERS & PROGRESSION	70
WHERE ARE THEY NOW?	72
GETTING TO VARNDEAN	74
INDEX	77

# WELCOME TO VARNDEAN COLLEGE

## FROM THE PRINCIPAL, DONNA-MARIE JANSON

WELCOME

"I am delighted to welcome you to Varndean College, a community where students become academically accomplished and flourish as a part of a welcoming, inspirational and close-knit family. We inspire academic excellence, high expectations and a thirst for knowledge, developing a curiosity and passion for lifelong learning.

Varndean College is an exceptional place to study at, where academic excellence thrives within a uniquely supportive and vibrant community. Nestled against the picturesque backdrop of Brighton and the sea, Varndean College offers a transformative educational experience in a stunning location and atmosphere.

Varndean College offers a broad curriculum featuring over 30 A Levels, a wide array of vocational courses, selected GCSEs, and the prestigious International Baccalaureate Diploma Programme. This ensures every student can pursue their academic interests with support from dedicated staff.

We have a dynamic culture which engages staff and students, celebrates achievement, encourages innovation, and strives for continual improvement. Each and every student is valued as an individual and those who visit the College comment on how they are overwhelmed by the warmth, energy and atmosphere which makes Varndean so special.

We are proud of our impressive environment where our students experience a stimulating and enriching education characterised by academic excellence, outstanding teaching, learning and support, as well as extensive opportunities for personal development and growth. Here at Varndean College we develop our students into well-rounded, confident and free-thinking individuals, who are excited and ready to move on to the next stage of their lives. This is demonstrated in our excellent results and our value-added score which places us in the top 10% of 16-19 providers in England. Ofsted has recently recognised us as Outstanding in many areas.

Students say that one of the greatest things about studying at Varndean College is that you feel part of a community and we provide an excellent transition between school and university or employment. They enjoy the welcoming, supportive atmosphere, the sense of a 'Varndean

family', as well as of course our academic distinction and the ability to bring out the best in everyone. Staff are passionate about the subjects they teach, dedicated to ensuring students reach their full potential. We are tireless in our belief that a happy student is a successful student and in ensuring that all students make excellent progress here.

Beyond academics, Varndean College offers a wealth of enrichment opportunities that broaden horizons and develop crucial life skills. From leadership programs to trips and volunteering initiatives, our students graduate not only with impressive qualifications but also with the confidence and resilience to navigate their future paths with purpose.

Varndean is more than just a college; it is a place where students thrive and transform their lives. The positive experiences and friendships formed here stay with our students for life, creating a supportive network that extends far beyond graduation. We take pride in being a springboard to future success, equipping our graduates with the skills, confidence, and ambition to pursue their dreams in higher education, careers, and beyond.

Recent campus enhancements, including expanded social spaces and additional classrooms, and a new outdoor amphitheatre, demonstrate our commitment to enriching the student experience and providing a supportive environment for learning and personal growth. These improvements are a testament to our ongoing dedication to excellence and innovation.

I invite you to discover more about Varndean by attending our upcoming College Open Events where you can experience first-hand the welcoming atmosphere and strong sense of community that defines Varndean College. Whether your aspirations lead to university, further training, or employment, Varndean is dedicated to empowering you to achieve your goals.

Join us at Varndean College, where every student is valued, supported, and inspired to succeed.

Together, let's embark on a journey of academic excellence and personal growth.



**"STUDENTS BENEFIT FROM EXPERT TEACHERS USING THEIR SPECIALIST KNOWLEDGE TO DEEPEN STUDENTS' UNDERSTANDING."**  
OFSTED 2024



WHY CHOOSE VARNDEAN

# WHY CHOOSE VARNDEAN COLLEGE?

RECOGNISED BY OFSTED AS OUTSTANDING IN MANY AREAS



EXCEPTIONAL ACADEMIC TRACK RECORD WITH EXCELLENT EXAM RESULTS



IN TOP 10% OF 16-19 PROVIDERS IN ENGLAND FOR VALUE ADDED



STUDENTS PROGRESS ON TO A WIDE RANGE OF TOP UK UNIVERSITIES



BROAD CURRICULUM WITH A SUPERB CHOICE OF COURSES, INCLUDING THE IB DIPLOMA



IMPRESSIVE ENVIRONMENT WITH STUNNING VIEWS OF BRIGHTON AND THE SEA



OUTSTANDING ADDITIONAL SUPPORT PROVISION



A PLETHORA OF ENRICHMENT OPPORTUNITIES TO CHOOSE FROM



COMMUNITY ETHOS, WHERE STUDENTS FEEL PART OF A CLOSE-KNIT AND WELCOMING FAMILY



DEDICATED AND SPECIALIST TEACHING AND SUPPORT STAFF



VARNDEAN COLLEGE IS A LEADING COLLEGE FOR ACTION AGAINST CLIMATE CHANGE



SUPERB FACILITIES, INCLUDING A £2.9M STEM CENTRE

# CHOOSING YOUR STUDY PROGRAMME

This prospectus is aimed at helping you to decide which combination of subjects you would like to study at college. However, we fully recommend that you view the more detailed information on our website and visit us at one of our Open Events during the Autumn.

Please do not worry if you do not know at this stage which career path you wish to pursue. A large percentage of students who come to study with us do not know what they wish to do following college, but they find their niche once they have started their studies here.

At Varndean College, we offer two levels of study:

## ADVANCED LEVEL (LEVEL 3)

## FOUNDATION LEVEL (LEVEL 2)

Which level you follow is dependent upon your predicted GCSE grades and whether you meet the entry requirements at enrolment.

## ADVANCED LEVEL (LEVEL 3)

An Advanced Study Programme is a two-year programme and will typically consist of three subjects. This could be a combination of A Levels, Level 3 Vocational courses or you can combine A Levels with Vocational courses.

### What is the difference between A Levels and Vocational Courses?

A Levels are predominantly assessed by exams at the end of the second year, whereas Vocational courses have a greater range of assessment methods.

Alternatively, you could choose to study the popular International Baccalaureate Diploma which is an alternative to A Levels and recognised by universities worldwide (see pages 42-45).

## FOUNDATION LEVEL (LEVEL 2)

For those students who do not meet the entry requirements of a Level 3 Advanced programme, we can offer a one-year Level 2 Foundation Programme instead. This will comprise of a mix of GCSEs and Level 2 vocational courses and will facilitate progression onto an Advanced Programme. Students need to meet the entry requirements.

## WHEN CHOOSING YOUR SUBJECTS, THERE ARE A NUMBER OF FACTORS YOU NEED TO CONSIDER:

- What are the entry requirements? Will the GCSEs I'm taking allow me to take the courses I have chosen?
- What do I enjoy? What am I good at?
- Do I prefer coursework or exams?
- Do I know what career I would like to pursue? If so, do I require any specific A Levels for entry onto a university degree? You can research the entry requirements for university at [www.ucas.com/undergraduate](http://www.ucas.com/undergraduate)
- Do I want a course that will lead to an apprenticeship or straight into employment?

# COURSE LEVELS EXPLAINED

## ADVANCED LEVEL (LEVEL 3)

A full-time two-year programme which is equivalent to at least 3 A Levels and which can be made up of a combination of Level 3 courses.

### THIS COULD INCLUDE:

#### A LEVELS

#### INTERNATIONAL BACCALAUREATE DIPLOMA

#### VOCATIONAL COURSES

**BTEC Certificate** (equivalent to ½ A Level) \*

**BTEC Extended Certificate** (equivalent to 1 A Level)

**CTEC Extended Certificate** (equivalent to 1 A Level)

**CTEC Diploma** (equivalent to 1 A Level)

**RSL Extended Certificate** (equivalent to 1 A Level)

**WJEC Applied Diploma** (equivalent to 1 A Level)

**BTEC Foundation Diploma** (equivalent to 1.5 A Levels)

**BTEC Diploma** (equivalent to 2 A Levels)

\* A one-year programme available in your second year of study only

## T LEVEL (EQUIVALENT TO 3 A LEVELS)

## FOUNDATION LEVEL (LEVEL 2)

A full-time one-year programme, which is equivalent to at least 3 or 4 GCSEs and which can be made up of GCSEs and vocational courses. This could include:

**GCSEs**

**BTEC First Award**

**NCFE Introductory Certificate**

**CTEC Level 2 Award**

All students are expected to be full-time and on an appropriate study programme of at least 16 hours per week

In addition to your course study time, your programme will consist of:

- **Tutorial** (compulsory for all students) which monitors your progress throughout college and your progression on to the next stage of your career. Your weekly tutorial will be 90 minutes
- **Planned Study** your teachers will set you 4 hours of work per subject to complete in your study periods. You will have some time on your timetable to support you making a start on that during the college day.
- **Enrichment Activity** (compulsory for all Year 1 students), participation in one of our weekly clubs, societies, visits, work experience or work-related activities (see pages 64-67).
- **Additional Learning Support** (if needed)
- **Careers, university or further education** advice and guidance
- **Participation in our Aspire Programme** for those progressing to competitive courses at Oxbridge and Russell Group universities, or degrees in Medicine, Veterinary Science and Dentistry (see pages 12-13)

# ENTRY REQUIREMENTS

## ADVANCED LEVEL (LEVEL 3)

### IB DIPLOMA OR 4 A LEVELS

A mixture of at least 7 GCSEs at Grades 9 - 6 including English, Maths and Science.

### 3 A LEVELS

A mixture of at least 6 GCSEs at Grades 9 - 4 including English.

### A MIXED PROGRAMME AT LEVEL 3, TO INCLUDE AT LEAST ONE VOCATIONAL COURSE

A mixture of at least 5 GCSEs at Grades 9 - 4 including English.

Some subjects have their own additional specific entry requirements. See the relevant course page for details. Where GCSE Maths or English at Grade 4 has not already been achieved, this will be included in your programme. This may be a GCSE or, if less than a Grade 3 has already been achieved, a stepping-stone qualification or an ESOL qualification.

## FOUNDATION LEVEL (LEVEL 2)

At least 4 GCSEs at Grade 3, including English.

At least one GCSE should be at Grade 4 or above.

English and Maths are compulsory and will be included in your programme if a Grade 4 has not already been achieved at GCSE. This may be a GCSE or, if less than a Grade 3 has already been achieved, a stepping-stone qualification or an ESOL qualification.



# APPLICATION PROCESS



RECOGNISED BY OFSTED  
AS OUTSTANDING IN  
MANY AREAS

APPLICATION PROCESS

Varndean College, BHASVIC and Brighton MET together form the Accord Colleges in Brighton and Hove. The three colleges have a coordinated **application process** for students seeking to study at any of the Accord Colleges. Under the Accord, you will not be able to make an application to both Varndean College and BHASVIC. This is so that these two sixth form colleges can effectively plan curriculum provision to cater for as many students wishing to study in one of these colleges as possible. You are, however, welcome to make an application to either of these colleges plus Brighton MET.

## 1. VISIT

Look around our beautiful and unique campus, find out about our superb academic track record and the outstanding support we provide, meet our staff and students to talk about specific subjects, as well as attend any presentations taking place.

Visit us at one of our Open Events, which take place on:

### OPEN DAY

Sat 28 Sept 2024, 11am – 2pm

### OPEN EVENINGS

Wed 6 & Thurs 7 Nov 2024, 5pm – 8pm

In addition, for those students interested in finding out about the International Baccalaureate Diploma, come along to our:

### INTERNATIONAL BACCALAUREATE EVENING

Tues 8 Oct 2024, 6.30pm – 7.45pm

## 3. ADMISSIONS INTERVIEW

You will be invited to attend an Admissions Interview, usually in January/February.

At the interview we will discuss your course choices with you, and providing you are predicted to meet the required entry requirements and you are supported by your school, you will be offered a conditional place. Please note that late in the application cycle, this may be a 'waiting list offer'.

## 4. NEW STUDENTS' DAY

If you have accepted an offer of a place here, you will be invited to attend our New Students' Day in the summer term.

This is when you will experience some time with us as a sixth form student, meet subject tutors, and learn more becoming part of the Varndean College community from September.

## 2. APPLY

Applications open from late September. Apply using the online application system at [www.varndean.ac.uk](http://www.varndean.ac.uk)

### PRIORITY DEADLINE

Friday 6 Dec 2024

Applications are accepted after this date, but priority is given to those received by the deadline.

## 5. ENROLMENT INTERVIEW

Following your GCSE results, you will be invited to attend a second Enrolment Interview in late August.

This is when we can discuss your results and finalise your programme of study. Do not worry if you haven't met the requirements for a specific course, we will discuss this with you and help find an alternative course that suits you.

## 6. INDUCTION

Attend an Induction Day in early September and begin your journey as a Varndean College student!



"MANAGERS PROVIDE PROGRAMMES OF LEARNING FOR STUDENTS TO DEVELOP THE KNOWLEDGE, BEHAVIOURS, CONFIDENCE AND RESILIENCE THEY NEED TO BE SUCCESSFUL." OFSTED 2024

The college day runs from 8.40am - 4.10pm Monday, Tuesday and Thursday, and until 5.05pm on Wednesday and Friday. Each student has their own individual timetable and does not attend lessons in all sessions. The following examples give an idea of what two different timetables might look like.

During non-contact time, students may choose to study off-site, but many students find it more productive to spend their non-contact periods in college, using this time for independent study in our library, IT suite, or one of our outdoor quads in the summer. The college offers free wi-fi and students can bring in their own laptops or tablets.



## YOUR TIMETABLE

### YEAR ONE STUDENT STUDYING 3 A LEVELS : BUSINESS STUDIES, ECONOMICS AND PSYCHOLOGY

	MONDAY	TUESDAY	WEDNESDAY	THURSDAY	FRIDAY
08.40 - 9.25	PSYCHOLOGY		BUSINESS STUDIES	ECONOMICS	
09.25 - 10.10	PSYCHOLOGY		BUSINESS STUDIES	ECONOMICS	
10.10 - 10.30	BREAK	BREAK	BREAK	BREAK	BREAK
10.30 - 11.15	BUSINESS STUDIES	ECONOMICS	PSYCHOLOGY		BUSINESS STUDIES
11.15 - 12.00	BUSINESS STUDIES	ECONOMICS	PSYCHOLOGY		BUSINESS STUDIES
12.00 - 12.50	LUNCH	LUNCH	LUNCH	LUNCH	LUNCH
12.50 - 13.35		PSYCHOLOGY		TUTORIAL	PLANNED STUDY
13.35 - 14.20		PSYCHOLOGY			PLANNED STUDY
14.20 - 14.40	BREAK	BREAK	BREAK	BREAK	BREAK
14.40 - 15.25			ENRICHMENT		ECONOMICS
15.25 - 16.10			ENRICHMENT		ECONOMICS
16.10 - 16.20	BREAK	BREAK	BREAK	BREAK	BREAK
16.20 - 17.05					

### YEAR ONE STUDENT STUDYING A COMBINATION OF 2 A LEVELS & A VOCATIONAL COURSE

	MONDAY	TUESDAY	WEDNESDAY	THURSDAY	FRIDAY
08.40 - 9.25		3D DESIGN	ENGINEERING		
09.25 - 10.10		3D DESIGN	ENGINEERING		
10.10 - 10.30	BREAK	BREAK	BREAK	BREAK	BREAK
10.30 - 11.15	ENGINEERING			PHYSICS	ENGINEERING
11.15 - 12.00	ENGINEERING			PHYSICS	ENGINEERING
12.00 - 12.50	LUNCH	LUNCH	LUNCH	LUNCH	LUNCH
12.50 - 13.35	PHYSICS	ENRICHMENT	PHYSICS	PLANNED STUDY	3D DESIGN
13.35 - 14.20	PHYSICS		PHYSICS	PLANNED STUDY	3D DESIGN
14.20 - 14.40	LUNCH	LUNCH	LUNCH	LUNCH	LUNCH
14.40 - 15.25	TUTORIAL			3D DESIGN	
15.25 - 16.10				3D DESIGN	
16.10 - 16.20	BREAK	BREAK	BREAK	BREAK	BREAK
16.20 - 17.05					

# INTERNATIONAL STUDENTS

Vardean College has a thriving International Department and welcomes students from across the world. You can join us for a one or two-year programme. You study alongside UK students and are fully included in all activities in the college.

We asked our current students, why study with us? Here are their responses:

## 1. High quality tuition

'The teachers are really enthusiastic and love the subjects they are teaching.'

## 2. Wide range of subjects

'Having the opportunity to study what I really want to, with subjects that weren't available back home. It has shown me a different way to study and approach school in general, less stressful. I hope I can keep a bit of this when I return home.'

## 3. The location

'The College grounds are spacious and green and we love how close to Brighton it is. And it's easy to get to London to explore.'

## 4. Host family accommodation

'I love my host family, they really made me feel at home and the food is amazing.'

## 5. International student support

'There is a dedicated team specifically to support, guide and help international students.'

'You have taken care of us and always been there for us, helping with any problems, listening to our ideas, building a strong sense of community for us, and believing in us.'

## 6. The opportunity to grow as a person

'I would definitely recommend coming to Vardean because of the lovely environment and the people. I have become way more independent and confident, and learned how to deal with challenges and unexpected events. I have learned how to make new friends, organise my studies and become a more open person.'

To apply or for further information, please contact the International Team at [international@vardean.ac.uk](mailto:international@vardean.ac.uk)

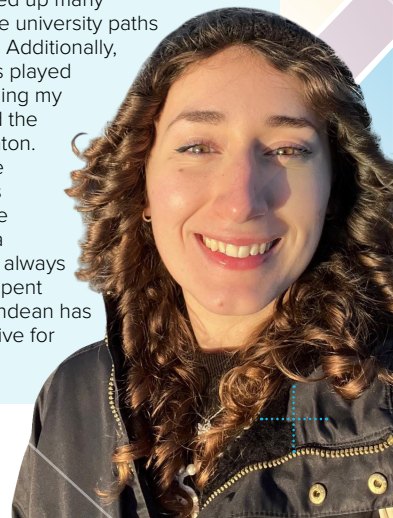
## WHAT OUR STUDENTS SAY

### SARAH TAYLOR

Sarah is from South Africa and came to Vardean College to study A Levels in Biology, Maths and Art "Vardean College quickly became my first choice while looking to study abroad. I was intrigued by the variety of courses and access to incredible resources. The college has a support system like no other, where the international team and dedicated staff have always put students first. Students have everything they need to thrive while attending courses here.

My education has benefited from the academic and personal qualities I have gained from life abroad. I have forged so many meaningful friendships and learned so much about different cultures, it's crazy to think how much I have changed for the better.

After finishing my courses at this college, my world has been opened up many opportunities for future university paths and career prospects. Additionally, Vardean College has played a crucial role in enriching my view on the world and the beautiful sites in Brighton. I am confident that the skills and connections I have developed here will pave the way for a promising future. I will always remember the time I spent here and the way Vardean has encouraged me to strive for more."



## ASPIRE AT VARNDEAN COLLEGE

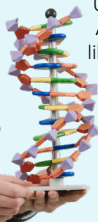
Varndean College provides an extensive range of support and opportunities for high-achieving students to enable them to make successful applications to the most competitive and prestigious universities. At their interview, students will have the opportunity to discuss the additional programmes and support available to them throughout their journey with us.

### WHAT OUR STUDENTS SAY

#### MADDI BURGESS SMITH

“Taking part in Varndean’s Aspire Programme helped me considerably with my applications and I have now achieved a place to study Biomedical Sciences at St Hugh’s College at the University of Oxford!

After university, I would like to follow a career in drug development and pharmacology.”



### APPLYING FOR OXBRIDGE OR A RUSSELL GROUP UNIVERSITY

Varndean is an excellent choice for students aspiring to study at Oxford, Cambridge or a Russell Group university. We offer a structured programme supporting students to progress to top universities. Our specialist team gives students bespoke one-to-one and group support, from the beginning of their Varndean journey through to their first day at university.

To ensure that students are in the very best position with their university application, we offer:

- Early identification during enrolment and Year One.
- Supporting super-curricular learning: encouraging you to take your subject knowledge above and beyond the exam syllabus by applying for summer schools, masterclasses and competitions
- Individual support throughout the application process including writing personal statements, preparing for pre-admissions assessments and getting ready for interview.
- Specialist tutors for Oxbridge and Medical/ Veterinary Science/Dental applications.
- Information talks by the admissions teams from both Oxford, Cambridge and Brighton & Sussex Medical School.

The College runs a programme of activities and support for students interested in progressing in the highly competitive fields of medicine, veterinary science or dentistry. These include:

- Practice interviews with the admissions team from Brighton and Sussex Medical School.
- Talks from ex-Vardean medical, veterinary and dental students about their experience of the application process, life as an undergraduate and their career paths.
- Talks from external speakers on current medical, veterinary and dental issues.
- Participation at conferences and workshops.
- Support with arranging work experience/volunteering to add weight to any application and provide evidence of a genuine commitment.
- Support with writing personal statements for university applications.
- Advice on how to keep up to date with current medical/veterinary/dental ethics issues.
- Advice about extension activities to support your application and help prepare you for your interview; such as the EPQ and competitions including the Cambridge Chemistry Challenge, RSC's Chemistry Olympiad, RSC's Annual Analyst Competition and STEM CREST Awards.

## RECENT ALUMNI OXBRIDGE SUCCESS

**Maddi Burgess Smith** - Biomedical Sciences, Oxford

**Flora Burleigh** - Psychological & Behavioural Sciences, Cambridge

**Meadow Osborne** - Law, Oxford

**Laura Boyd** - Philosophy, Politics & Economics, Oxford

**Amelia MacLeod** - Law, Oxford

**Mia Thomas Giles** - Human, Social, and Political Sciences, Cambridge

**Ella Tingley** - Engineering, Cambridge

**Ushika Kidd** - Human Sciences, Oxford

**Alice Brooker** - History & English, Oxford

**Willem Jump** - Maths, Oxford

**Esme Hubert** - German & Linguistics, Oxford

**Bo-Min Ryu** - Classical Archaeology & Ancient History, Oxford

**Nell Breckenridge** - History & Politics, Cambridge

**Lillian Lafan** - Philosophy, Cambridge

**Seowon Jung** - Natural Sciences, Cambridge

**Jess Macrae** - Biology, Oxford

**Francesca Fairhead** - English, Cambridge

**Jo Goad** - Geography, Cambridge.

## MEDICINE, VETERINARY SCIENCE OR DENTISTRY ALUMNI

**Omar Hamayoon** - Medicine, University of Leicester

**Anna Zhang** - Medicine, University College London

**Isobel Denslow** - Medicine, University of Belfast

**Katie O'Rourke** - Medicine, St George's, University of London

**Anthea Gabot** - Medicine, University College London

**Imogen Grosvenor** - Veterinary Medicine, University of Nottingham

**Fiyinfoluwa Oalipo** - Medicine, Imperial College London

**Anya-Niamh Tidey** - Medicine, St. George's, University of London

**Anya Rehman-Wood** - Medicine, University College London

**Louie Garnett** - Medicine, University of Leeds

**Jessica Duke** - Veterinary Medicine, University of Surrey

**Sam Segal** - Medicine, University of Sheffield

**Portia Smith** - Medicine, University of Cambridge

**Labib Syed** - Medicine, Bartholomews London School of Medicine & Dentistry

**Natasha Wilcock** - Medicine, University College London

**David Cobbett** - Dentistry, University of Newcastle. In 2019 named as UK's top undergraduate dentist for clinical skills by Royal College of Surgeons of Edinburgh.



AMELIA MACLEOD



OMAR HAMAYOON



ANNA ZHANG

# STEM AT VARNDEAN COLLEGE

## Inspiring the next generation of scientists, technologists, engineers and mathematicians

With its £2.9m STEM Centre, Varndean College is at the forefront to offer those students wishing to pursue careers in science, maths and engineering, the finest opportunity of progressing to the next stage of their careers. The STEM Centre enables students and staff to benefit from four huge impressive science labs, six teaching rooms, as well as a fabulous central atrium.

Varndean College offers an extensive range of STEM subjects; including traditional A Levels such as Biology, Chemistry, Physics, Computer Science, Maths and Further Maths, as well as vocational courses in Applied Biology (Medical Science), Engineering, and Applied Science.

Studying STEM subjects can enable students to follow degrees and careers which are much sought after owing to their high demand in commerce and industry. The challenging, rigorous academic framework, combined with the requisite technical and practical skills developed throughout the course, make them ideal choices for developing skills which keep pace with the advances being made in technology and science.

Our students also take part in a wide range of extra-curricular activities and competitions, with many leaving to progress onto higher education courses at top universities.

## STUDENTS TAKE PART IN THE...

- RSC's annual Chemistry Olympiad and finish with an impressive list of gold, silver and bronze awards.
- RSC's Annual Analytical Competition and were runners up in the SE Regional Division.
- Cambridge C3L6 Chemistry Challenge where again students achieve an impressive array of awards.
- University of Oxford's Practical Ethics and Responsibility competition
- University of Cambridge's annual Chemistry Race
- University of Reading's 'Heroines in Science' competition
- Varndean College Annual Chemistry Conference, where presentations range from talks on drugs to medical advances to energetics and the enigmatic 2nd Law of Thermodynamics.
- Annual British Biology Olympiad
- Gold CREST Awards
- Annual UK Senior Maths Challenge

# RUBY NUNNS

## STUDYING

International Baccalaureate Diploma

## PREVIOUS SCHOOL

Burgess Hill Academy

“I was attracted to the IB because of the breadth of its studies and because it looked challenging. I knew I wanted to study Engineering at university and therefore had to take Maths and Physics, but was struggling to choose other subjects. Whilst studying such a broad range of subjects has been difficult at times, I have really enjoyed developing a variety of skills, from critical thinking to academic referencing, as well as creativity skills in my coursework and group science project. I now feel well prepared for university and the future.”

## WHAT NEXT

Civil & Structural Engineering, University of Leeds



“STUDENTS  
FLOURISH IN THE  
VIBRANT AND HIGHLY  
INCLUSIVE CULTURE STAFF  
CREATE.” OFSTED 2024

RECOGNISED  
BY OFSTED AS  
OUTSTANDING IN  
MANY AREAS

# COURSES - ADVANCED LEVEL

To study the International Baccalaureate Diploma, you will require a minimum of 7 GCSEs at Grade 6 or above, including English, Maths and Science.

INTERNATIONAL BACCALAUREATE DIPLOMA	ENGLISH	MATHS	SCIENCE	OTHER
INTERNATIONAL BACCALAUREATE	6	6	6	In addition, some subjects have their own specific entry requirements and these can be found in the separate IB Prospectus or our website

To study a full A Level Programme, you will require a minimum of 6 GCSEs at Grade 4 or above, including English.

In addition, some subjects have their own additional specific entry requirements and these are shown in the table.

A LEVELS	ENGLISH	MATHS	SCIENCE	OTHER
3D DESIGN	4	-	-	Grade 5 in GCSE Art or Design Technology (resistant materials, product design, graphic products) <b>or</b> Merit or above at BTEC Level 2, <b>or</b> If GCSE Art or Design Technology have not been taken, suitably qualified students with a good portfolio of work will be considered.
ART (FINE ART)	4	-	-	Grade 5 in GCSE Art or Textiles or Merit or above at BTEC Level 2 in Art and Design, <b>or</b> If GCSE Art or Technology has not been taken, suitably qualified students with a good portfolio of work will be considered.
BIOLOGY	4	5	6,6	Grade 6 in GCSE Biology and another Science GCSE or 2 x Grade 6 in GCSE Combined Science
BUSINESS STUDIES	4	4	-	-
CHEMISTRY	4	6	6,6	Grade 6 in GCSE Chemistry and another Science GCSE or 2 x Grade 6 in GCSE Combined Science
CLASSICAL CIVILISATION	4	-	-	-
COMPUTER SCIENCE	4	6	-	Grade 4 in GCSE Computer Science or IT preferred
DRAMA & THEATRE STUDIES	4	-	-	Grade 5 in GCSE Drama (if taken) or a background of successful experience in productions
ECONOMICS	4	5	-	-
ENGLISH LANGUAGE	4	-	-	-
ENGLISH LITERATURE	4	-	-	-
ENGLISH LANGUAGE & LITERATURE	4	-	-	-
ENVIRONMENTAL SCIENCE	4	4	4,4	GCSE Geography is useful



A LEVELS	ENGLISH	MATHS	SCIENCE	OTHER
FILM STUDIES	4			-
FRENCH	4	-	-	Grade 6 in GCSE French
GEOGRAPHY	4	4	4	Grade 4 or above in Geography (if taken)
GERMAN	4			Grade 6 in GCSE German
GRAPHIC DESIGN	4			Grade 5 in a GCSE Art, Design or Technology based subject <b>or</b> Merit or above at BTEC Level 2, or If GCSE Art, Design or Technology have not been taken, suitably a good portfolio of work demonstrating your skills will be considered.
HISTORY - EARLY MODERN	4			
HISTORY - MODERN	4			
HISTORY OF ART	4			Grade 4 in GCSE English Literature or History
LAW	5	4		Grade 5 in GCSE English
MATHS	4	6		
MATHS - FURTHER	4	7		
MEDIA STUDIES	4			
PHILOSOPHY	4			
PHOTOGRAPHY	4			Grade 5 in GCSE Photography <b>or</b> Merit or above at BTEC Level 2 in Photography (if taken), or evidence of commitment to and aptitude for photography demonstrated through submission of work
PHYSICAL EDUCATION	4			Grade 4 in GCSE Science or PE (preferred) Performance at a competitive/club level in a sport of your choice
PHYSICS	4	6	6,6	Grade 6 in both GCSE Physics and another Science GCSE <b>or</b> 2 x Grade 6 in GCSE Combined Science
POLITICS	4			
PSYCHOLOGY	4	4	4	
SOCIOLOGY	4			
SPANISH	4			Grade 6 in GCSE Spanish
TEXTILES	4			Grade 5 in GCSE Art or Textiles <b>or</b> Merit or above at BTEC Level 2 in Art and Design, or if GCSE Art, Textiles <b>or</b> Technology have not been taken, suitably qualified students with a good portfolio of work will be considered.

T LEVELS	ENGLISH	MATHS	SCIENCE	OTHER
EDUCATION & CHILDCARE	4	4		Completed DBS certificate. A commitment to hard work and a real interest in working with children is essential.

To study a Mixed Programme at Level 3, to include at least one Vocational Course, you will require a minimum of 5 GCSEs at Grade 4 or above, including English.

In addition, some subjects have their own additional specific entry requirements and these are shown in the table below.

VOCATIONAL COURSES	ENGLISH	MATHS	SCIENCE	OTHER
BIOLOGY (APPLIED HUMAN BIOLOGY)*	4	4	5,4	Grade 5 or above in GCSE Biology and Grade 4 another Science GCSE or Grade 5/4 in GCSE Combined Science
BUSINESS VOCATIONAL	4			
COMPUTER GAMES DESIGN	4			Game, art or programming portfolios are welcomed, but not essential.
CRIMINOLOGY	4			
DANCE (equivalent to 1.5 A Levels)	4			Proven successful dance experience.
ENGINEERING*	4	5	5,5	Grade 5/5 or above in GCSE Combined Science or a 5 in Physics and a 5 in one other science
FILM PRODUCTION	4			
FORENSIC SCIENCE & CRIMINAL INVESTIGATION (DOUBLE)* (equivalent to 2 A Levels)	4	5	5,5	Grade 5 or above in GCSE Core Science and Grade 5 in Additional Science or Grade 5/5 in GCSE Combined Science
HEALTH & SOCIAL CARE*	4			
INFORMATION TECHNOLOGY*	4	4		Grade 4 in GCSE IT or equivalent (desirable)
LAW (APPLIED)	4			
MUSIC PRODUCTION	4			Music production experience, which can be demonstrated through either GCSE or BTEC Level 2 (if taken) or a portfolio submission of music, is preferred. Practical instrumental skills are helpful, but not essential.
PERFORMING ARTS (equivalent to 1.5 A Levels)	4			Grade 5 in GCSE Drama or Merit in L2 BTEC (if taken) or a background of successful experience in productions.
PROTECTIVE SERVICES	4			
PSYCHOLOGY (APPLIED)*	4	4	4	
SPORT (SINGLE)	4			
SPORT (DOUBLE) (equivalent to 2 A Levels)	4			
SPORT & EXERCISE SCIENCE (equivalent to 2 A Levels)	4		4	
TRAVEL & TOURISM	4			

All vocational courses are the equivalent of 1 A Level unless otherwise stated.

\* As part of ongoing government reforms in post-16 education, there may be changes to our vocational course offerings. One significant change under consideration is the introduction of Advanced Applied Qualifications (AAQs), which may replace some existing vocational courses. For the latest updates please regularly visit the courses section of our website.

# COURSES - FOUNDATION LEVEL

To study a Foundation Level Programme, you will require a minimum of 4 GCSEs at Grade 3 or above, including English.

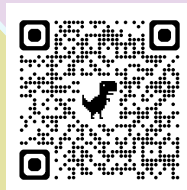
At least one GCSE should be at Grade 4 or above.

English and Maths are compulsory and will be included in your programme if a Grade 4 has not already been achieved.

## FOUNDATION LEVEL COURSES

GCSE COURSES	ENGLISH	OTHER
ART & DESIGN	3	Grade 3 in GCSE Art or Textiles (if taken) or provide portfolio of work
ENGLISH	3	-
MATHS	3	For Higher Level, Grade 4 in GCSE Maths
PHOTOGRAPHY	3	Grade 3 in GCSE Art, Graphics or Textiles (if taken) or provide portfolio of work
SCIENCE - BIOLOGY	3	2 x Grade 3 3 in GCSE Science, Grade 3 in GCSE Maths
SCIENCE - TRILOGY (DOUBLE)	3	2 x Grade 3 3 in GCSE Science, Grade 3 in GCSE Maths
SOCIOLOGY	3	-

VOCATIONAL COURSES	ENGLISH	OTHER
BUSINESS	3	-
CARING FOR CHILDREN	3	-
FILM PRODUCTION	3	Prior successful experience of Media or Photography or a portfolio of work
HEALTH & SOCIAL CARE	3	-
PERFORMING ARTS	3	Previous experience of drama or performing arts
PROTECTIVE SERVICES	3	-
SPORT	3	-





## 3D DESIGN

### A LEVEL

Looking at the world in a questioning and inquisitive way and then responding to it through recording, model making, material experiments and final three-dimensional outcomes is the basis of the 3D Design course. You produce practical work in both product design and architectural design in the first year and then specialise by the second year. There is a written 1000–3000 word study which is completed at the start of the coursework unit. Ideas are further developed and refined through looking at the work of other designers and architects.

This is a creative rather than technology-based course and students must be willing to explore a wide variety of approaches to recording their ideas ranging from computer aided design to observational drawing. There is an emphasis upon developing sophisticated concepts through material experimentation and model making. Design tutors at Varndean are all practising artists/designers.

### ENTRY REQUIREMENTS

Standard Advanced Level entry requirements

#### Plus

Grade 5 in GCSE Art or Design Technology (resistant materials, product design, graphic products)

#### Or

Merit or above at BTEC Level 2

#### Or

If GCSE Art or Design Technology have not been taken, suitably qualified students with a good portfolio of work will be considered.

### ASSESSMENT

60% coursework, 40% exam



## ART (FINE ART)

### A LEVEL

Coursework projects allow you to explore your ideas in real depth. You will learn new skills, experiment with materials, develop creatively and investigate the work of other artists in well-equipped specialist studios guided by experienced and supportive tutors who are also practising artists. Students work within broad topics to find their own areas of interest and are encouraged to be inquisitive and passionate.

As you develop, individual subjects of study are negotiated between student and tutor. In the second half of Year Two, an externally set assignment allows you to demonstrate your ability to record observations, respond to the work of other artists, develop ideas and produce your own work at a high level. You will:

- Investigate a range of approaches to drawing
- Experiment with a range of materials
- Learn from other artists
- Paint in oil or acrylics on a range of surfaces
- Undertake printmaking and mixed media
- Carry out life drawing
- Visit London galleries
- Extend your drawing skills, including working from life
- Undertake In-depth practical and written critical research
- Undertake individual practical projects
- Create ambitious creative outcomes in two or three dimensions on a range of scales
- Show your work in an exhibition in Year 2

### ENTRY REQUIREMENTS

Standard Advanced Level entry requirements

#### Plus

Grade 5 in GCSE Art or Textiles

#### Or

Merit in BTEC Level 2 First Certificate in Art and Design

Or If GCSE Art or Technology has not been taken, suitably qualified students with a good portfolio of work will be considered.

### ASSESSMENT

60% coursework, 40% externally set assignment

# WALA MUSSA

## STUDIED

Biology, Chemistry, Maths

## PREVIOUS SCHOOL

Hove Park School

“Varndean College really appealed to me because of its brand-new STEM Centre facilities, which meant I would be able to benefit from new labs and equipment, as well as the excellent teaching the College provided. Having these new facilities has definitely helped me with my learning.

The students at Varndean have been so kind and friendly, and the staff are really supportive. Class sizes are good too, which means you receive a lot of one-to-one support in your lessons, as well as catch-up sessions which help make you feel at ease.

Because I want to go on to university to study Medicine, I also belonged to the Med/Vet/Dent group which is aimed at giving extra support to those students wanting to pursue careers in Medicine, Veterinary Science or Dentistry. The group provides support with university applications and interviews, as well as talks by former students currently studying or working within those career fields.

I would most certainly recommend that you attend the Varndean College open days and ask as many questions as you can and go with your gut instinct. I did.”

## WHAT NEXT?

Medicine, Brighton & Sussex Medical School

“VARNDEAN COLLEGE REALLY APPEALED TO ME BECAUSE OF ITS BRAND-NEW STEM CENTRE FACILITIES.”





## BIOLOGY - APPLIED \* (APPLIED HUMAN BIOLOGY)

**BTEC LEVEL 3 EXTENDED CERTIFICATE (EQUIVALENT TO 1 A LEVEL)**

If you enjoyed Biology at school and want to increase your specialist knowledge and understanding in a practical context then this is the course for you. The BTEC Applied Human Biology, is a two-year course equivalent to one A Level, but the approach is different to A Level as there is a greater emphasis on practical work.

Topics covered include

- Biological Principles
- Microorganisms and Infectious Diseases
- Biomedical Science
- Genetics
- Health Disease, Treatments and Therapies
- Physiology
- Research Skills

### ENTRY REQUIREMENTS

Standard Advanced Level entry requirements

**Plus**

Grade 5 or above in GCSE Biology and Grade 4 another Science GCSE

**Or** Grade 5/4 in GCSE Combined Science

AND Grade 4 in GCSE Maths

### ASSESSMENT

Coursework and examination



**“I CHOSE VARDEAN BECAUSE IT SEEMED FULL OF PASSIONATE TEACHERS THAT I INSTANTLY KNEW I WANTED TO BE TAUGHT BY.”**

**ALICE BURTON, EX WARDEN PARK ACADEMY**

## BIOLOGY

### A LEVEL

If you are fascinated by life and living processes and want to learn more about topics such as Genetics & DNA, Molecular Biology, Physiology and Ecology, then Biology is an obvious choice for you. It will help you to develop a much more detailed scientific knowledge and understanding of the subject.

As well as gaining a sound understanding of biological principles, you will become aware of advances in technology relevant to Biology and recognise the value and responsible use of Biology in society.

The AQA specification is an exciting way to learn Biology. It is taught in a way that enables you to put the biological principles and processes into context, making them seem more relevant. Biology is also a required, or at least desirable, subject for a large number of career pathways. Topics covered include;

- Biological molecules and cells
- Organisms exchange substances with their environment
- Genetic information, variation and relationships between organisms
- Energy transfers in and between organisms
- Organisms respond to changes in their internal and external environments
- Genetics, populations, evolution and ecosystems
- The control of gene expression

### ENTRY REQUIREMENTS

Standard Advanced Level entry requirements

**Plus**

Grade 6 in GCSE Biology and another Science GCSE

**Or**

2 x Grade 6 in GCSE Combined Science

**Plus**

Grade 5 in GCSE Maths

Note: Biology should be taken with a facilitating subject, these are Chemistry, Physics, Mathematics, Psychology, PE or Geography

### ASSESSMENT

100% exam



## BUSINESS STUDIES

### A LEVEL

If you are interested in running your own business or understanding how businesses work, a business course could be right for you. You will study business in a variety of forms (example large/small, UK focused/global, service/manufacturing) and consider such topics as the nature of business and the importance of the context it operates within. You will study and research the internal and external influences that shape the important strategic decisions that all businesses have to make – these might include zero inflation and low interest rates, the slowing down of growth in China and the potential conflict between the market's demand for competitive prices and shareholder's desire for profits. Assessment on the course will require your development of good quantitative and analytical skills that will be used in case study scenarios drawn largely from real business situations. The course is geared towards the contemporary business world and students will have to engage with the reported business news, you will be encouraged to keep a case book of current business issues.

### ENTRY REQUIREMENTS

Standard Advanced Level entry requirements

#### Plus

Grade 4 in GCSE Maths

### ASSESSMENT

100% exam



## BUSINESS VOCATIONAL

### BTEC LEVEL 3 EXTENDED CERTIFICATE (EQUIVALENT TO A LEVEL)

If you want a foothold in this community then a vocational course could well be a first step. Whatever your chosen career path, a business course will help you on your way: directly into employment or to higher level study. We choose topics and assignments based on real organisations or situations which reflect the opportunities that the city has to offer. You will develop the range of skills required in business through varied ways that portfolio evidence is collected: individual research and report, presentations and simulated and real business activities.

The new suite of BTEC Nationals were designed in association with leading universities and employers with academic and career progression in mind. All Business students at Varndean are able to compete to be accepted onto the prestigious 'Paths 2 Success' mentoring programme which offers work internships and individual business mentors to the winning candidates.

### ENTRY REQUIREMENTS

Standard Advanced Level entry requirements

### ASSESSMENT

42% coursework, 33% exam, 25% controlled external assessment



# SAMUEL CESARIO-MENDOZA

## STUDIED

Business Studies, Maths, Physics

## PREVIOUS SCHOOL

Hove Park School

“I chose Varndean College due to its great academic results, its diverse community and the support with your studies that I felt other colleges did not provide.

I chose to study A Levels in Business, Maths and Physics because I originally wanted to pursue a career in architecture. Maths had been my favourite subject since primary school and I wanted to carry this passion through into college and learn new mathematical theories. Studying Maths also strengthened my mathematical skills in A Level Physics and the two subjects really intertwined well together. I really enjoyed the complicated concepts in Physics and unravelling why things act the way they do, thus developing my critical thinking and problem-solving skills.

I found Business Studies extremely interesting, learning about how the real world operates and acquiring life skills that can be implemented in your daily life. Taking Business opened my eyes into the field of economics and now instead of following a career in architecture, I am hoping to study Economics and Finance at Queen Mary University of London and pursue a career in finance instead.

Studying at Varndean College really helps you connect with people from different backgrounds and with the flexible timetable, gives you time for independent study which plays a massive role in getting prepared for life at university.”

## WHAT NEXT?

Economics & Finance, Queen Mary University of London (or University of Bristol – Insurance)

“I CHOSE VARNDEAN COLLEGE DUE TO ITS GREAT ACADEMIC RESULTS, ITS DIVERSE COMMUNITY AND THE SUPPORT THAT I FELT OTHER COLLEGES DID NOT PROVIDE.”





## CHEMISTRY

### A LEVEL

Why you would study Chemistry? Chemistry has worldwide impact. As a fundamental physical science, it has a lasting effect on our planet and will be needed to help tackle the challenges society faces in changes to environment, food security and energy supply. Almost every new technological change and important discovery has its foundations in Chemistry.

Chemistry is the key to life and making the world a better place in which to live. It provides the basis for medicine, agriculture, food technology, environmental science, forensic science and many other fields.

Having a chemistry qualification is like having an open flight ticket to any destination in the world!

### ENTRY REQUIREMENTS

Standard Advanced Level entry requirements

#### Plus

Grade 6 in GCSE Chemistry and another Science GCSE

#### Or

2 x Grade 6 in GCSE Combined Science

#### Plus

Grade 6 in GCSE Maths

Students may also need to attend an additional Maths support class, as required

### ASSESSMENT

100% exam, including practical work.

## CLASSICAL CIVILISATION

### A LEVEL

Classical Civilisation is the study of ancient Greek and Roman cultures. The ultimate humanities subject, it comprises a wide range of disciplines, from literature to art and archaeology, to politics, history and economics, mythology and philosophy.

You will study works of epic and lyrical poetry, works of philosophy, tragedies, comedies, and you will develop an understanding of how these disciplines interrelate in order to think critically and creatively about the foundations of Western culture and society.

Many students progress to degree courses in Classics. It is also excellent preparation for degrees in Literature, History, Politics, Philosophy, Law and Drama/Theatre Studies. It is widely recognised as highly beneficial for a huge variety of career paths, including journalism, banking, politics, the creative arts, the fine art market, and academia.

Each year we organise a trip to Rome or Athens. There are also opportunities for visits to plays, workshops and talks.

### ENTRY REQUIREMENTS

Standard Advanced Level entry requirements

### ASSESSMENT

100% exam



**“MY TUTORS ARE INCREDIBLE AND I HAVE BUILT SUCH AMAZING RELATIONSHIPS WITH THEM. EVERYONE PUTS SO MUCH ENERGY INTO TEACHING US ENGAGING CONTENT.”**

**ELISA OAKES, EX KINGS ACADEMY RINGMER**

## COMPUTER GAMES DESIGN

**RSL LEVEL 3 EXTENDED CERTIFICATE (EQUIVALENT TO 1 A LEVEL)**

Are you keen to pursue an interest in designing and developing computer games? Through practical projects, you will design and produce digital games by exploring the parts that make up a completed game. Sessions are workshop based so you will have hands-on experience of using industry-standard software and workflow techniques. You will produce 3D and 2D game levels, game code, game design documents, concept art and user interface elements. Visiting speakers and visits will give you an insight into working in the industry. You will develop skills in Unity, Blender, Construct3, Adobe Photoshop and Visual Studio.

### ENTRY REQUIREMENTS

Standard Advanced Level entry requirements  
Game, art or programming portfolios are welcomed but not essential.  
Students may also need to attend an additional Maths support class, as required

### ASSESSMENT

100% coursework



**“VARDEAN COLLEGE HAS THE BEST GAMES DESIGN COURSE IN BRIGHTON & HOVE.”**

TAYLOR TRATTIESE, EX PORTSLADE ALDRIDGE COMMUNITY ACADEMY



## COMPUTER SCIENCE

**A LEVEL**

Computer Science is a subject that spans theory and practice. You will become a confident programmer using different languages to solve problems. We will apply Computational Thinking to decompose larger problems into smaller ones and use a range of techniques to solve them.

In A Level Computer Science, you will learn about many interesting theory topics such as how encryption allows the safe transfer of private data over public networks. You will learn about security issues such as hacking and how viruses are spread. Programming is a key part of the course. You will be taught programming concepts in a range of languages and complete weekly challenges.

You will choose your own engaging project idea and develop your own program for a client or for fun, such as a 3D game using Unity. This project will form 20% of your final A Level grade.

For extra support we run a lunchtime Code n Cake club, come along for help with homework from a tutor, or from one of your peers. Some students use this space to collaborate on fun projects - a great way to stand out in your UCAS application.

### ENTRY REQUIREMENTS

Standard Advanced Level entry requirements

#### Plus

Grade 6 in GCSE Maths and  
Grade 4 in GCSE Computer Science or IT preferred

### ASSESSMENT

Two written exams, one coursework project.



## CRIMINOLOGY

**WJEC LEVEL 3 APPLIED DIPLOMA**

**(EQUIVALENT TO 1 A LEVEL)**

Criminology is the study of criminality, what the causes are and how society deals with crime. This includes studying a range of underreported crimes and how campaigns can lead to changes in our criminal justice system. You will be required to design your own campaign for change on a particular crime. You will also consider why people commit crime and whether the range of theories presented are credible.

The second year of the course looks at the structure of our criminal justice system and how effective different agencies are in a criminal investigation. It is an interdisciplinary social science subject, drawing from a range of sociological, psychological and biological discussions as well as law. Lessons will be varied as per any A Level subject. You will be required to undertake independent research during lesson time and to present your findings to the class.

The course could be studied alongside other Level 3 qualifications. However, as there is overlap between the material covered in Criminology and the material covered in Sociology, Psychology and Law, it is advised that a maximum of one of these three subjects is studied alongside.

### ENTRY REQUIREMENTS

Standard Advanced Level entry requirements

### ASSESSMENT

100% exam and controlled assessment.



## DANCE

**BTEC LEVEL 3 FOUNDATION DIPLOMA**

**(EQUIVALENT TO 1.5 A LEVELS)**

The course will challenge you both physically and mentally and push you to become a thinking dancer whilst developing strong creative and technical dance skills. This course promotes both professionalism and artistry and is excellent preparation for those wishing to study and train in dance at higher level. It is also accessible to anyone with a genuine passion for dance.

The course is an exciting and practical programme that is assessed via practical internal and external assessment, coursework and vocational projects. There will be trips to see a range of performances, as well as the chance to work with visiting dance companies and professional choreographers. You will:

- Study, learn and perform a range of work by cutting edge choreographers.

- Learn how to choreograph innovative and creative work for live performance.

- Experience the world of the working dancer through a range of classes and workshops.

- Work together as a professional company to produce a full-length piece of work that is performed in a professional theatre space.

- Learn about professional practice, develop your artistic voice, skills in improvisation and gain audition insights and tools.

- Gain work experience, assisting and stage managing at Let's Dance at The Dome, Brighton.

**Due to the qualification pathway of this BTEC course, you cannot take BTEC Dance alongside BTEC Performing Arts. You must choose one or the other.**

### ENTRY REQUIREMENTS

Standard Advanced Level entry requirements, as well as proven successful dance experience.

### ASSESSMENT

Vocational assignments

# DRAMA AND THEATRE STUDIES

## A LEVEL

This practical and busy course provides an excellent opportunity to study drama and theatre as part of our dynamic and thriving department.

You will extend your skills in the understanding of theatre and how plays are constructed, as well as the performance of drama. Varndean Drama students find this course engaging and challenging because it involves them in something that is both creative, relevant and academically rigorous. You will explore many styles of performance and attend exciting and diverse professional theatre productions throughout your studies, many of which are in London. In addition to performance skills, you will develop skills in critical analysis, observation, interpretation and communication.

**Assessment:** Unit 1: Theatre Workshop (20%) - Adapt/create/perform original piece of theatre with creative log; Unit 2: Text in Action (40%) - a) Rehearse and perform scripted group piece and b) Devise, refine and perform original theatre piece, in response to stimulus, with accompanying written report; Unit 3: Text in Performance (40%) - Written examination on 3 set texts.

## ENTRY REQUIREMENTS

Standard Advanced Level entry requirements

### Plus

Grade 5 in GCSE Drama (if taken) or a background of successful experience in productions

## ASSESSMENT

60% practical coursework, 40% written exam



# ECONOMICS

## A LEVEL

You only have to read a newspaper or watch TV to realise how the economic system affects our existence and future. In Economics, you will study a range of issues, in micro, you will look at issues like why some workers are paid very well and some aren't. You will look at markets that work and ones that don't work, some markets work well, for instance the mobile phone market, others don't like the market for tobacco or gambling. You will look at bigger national issues in macro, like inflation, unemployment and the standard of living. You will also investigate some of the major international issues that we face, like environmental damage, international development, globalisation and trade. You will look behind some of the headlines and slogans about things like inequality, migration and our relationship with Europe. Economics uses models and theories to help us to understand these problems. To succeed in economics, you will need a combination of logical reasoning skills and the ability to read material and synthesise meaning from the material. It is probably true to say that after having studied economics for A Level, you will have a different view of the world that we live in, the problems that we face and their possible solutions.

## ENTRY REQUIREMENTS

Standard Advanced Level entry requirements

### Plus

Grade 5 in GCSE Maths  
Grade 4 in GCSE English Language

## ASSESSMENT

100% exam



## EDUCATION & CHILDCARE (EARLY YEARS SPECIALISM)

### LEVEL 3 T LEVEL

This is a two-year technical course covering core educational themes from birth to nineteen years with specialist early years education and care content from birth to seven years. This course provides excellent opportunity for academic study alongside practical experience. Successful completion of the two years will enable students to enter the workplace as a qualified practitioner in roles such as nursery practitioner, teaching assistant, nanny, holiday rep, and other related employment. The academic skills you will develop will provide a strong basis for university study such as primary teaching, early childhood studies, special needs education and other related subjects.

Please note that this course is a stand-alone full-time course and you cannot choose it alongside other A levels.

### ENTRY REQUIREMENTS

Standard Advanced Level entry requirements, including Grade 4 in GCSE Maths  
You will also need a completed DBS certificate.  
A commitment to hard work and a real interest in working with children is essential.

### ASSESSMENT

Written exams in both years, controlled assessments, projects carried out in placement and successful completion of 750 hours in placement.



## ENGINEERING \*

### CTEC LEVEL 3 EXTENDED CERTIFICATE

#### (EQUIVALENT TO 1 A LEVEL)

Electrical, Electronic and Mechanical Engineers; Aerospace, Automotive and Nuclear Engineers; Civil Engineers and Environmental Engineers. What do they all have in common? They are all engineers!

If you are interested in Engineering then this course is for you! It is a modular course with a mixture of exams and project work and if you combine this with other suitable qualifications it will allow you to progress to your dream career in Engineering.

These are the five units that make up the Level 3 Extended Certificate:

**UNIT 1:** Principles of Engineering (Exam)

**UNIT 2:** Materials Science and Technology (Exam)

**UNIT 3:** Engineering in Practice (Practical/Portfolio)

**UNIT 4:** Computer-Aided Design (CAD) (Practical/Portfolio)

**UNIT 5:** Electrical Devices and Circuits (Practical/Portfolio)

### ENTRY REQUIREMENTS

Standard Advanced Level entry requirements  
**Plus**

Grade 5 or above in GCSE Maths  
Grade 5/5 or above in GCSE Combined Science or a 5 in Physics and a 5 in one other science

### ASSESSMENT

60% coursework, 40% externally assessed units

# ISABELLA PAYNE

## STUDIED

Education & Childcare T Level

## PREVIOUS SCHOOL

Longhill High School

“Being a young carer to a sibling throughout my adolescent years, I knew I wanted to study Education and Childcare and after researching which colleges offered this course in my area, immediately decided that Varndean College was top of the list. I’d heard nothing but good reviews about the college and after visiting at the open day, instantly knew that Varndean was the place for me. The Level 3 Education and Childcare course was perfect, as I wanted to focus on this full-time without having to study other subjects alongside. You also got to undertake a weekly placement at either a nursery or primary school.

I was very nervous for my interview, but all the staff I spoke to on the day were very understanding of this and immediately put me at ease. In fact, I have received nothing but support throughout my entire two years at Varndean. Being a full-time course also meant I developed strong friendships with all the class and we were all like a family.

During my course I particularly enjoyed being at my placement and being able to take what I have learnt in the classroom and putting it into real practice. It provided me with huge experience and I am now qualified to work in nurseries and primary schools. However, I am now hoping to go on to study at the famous Norland College in Bath, where I can extend my training to become one of the best nannies in the world ... the Royal Family has a Norland nanny! Norland College only accepts 100 new students each year from worldwide and I therefore feel very privileged to gain a place, and will be forever grateful for the support I have received from Varndean.”

## WHAT NEXT?

Early Childhood Education & Care,  
Norland College

**“I’D HEARD NOTHING BUT GOOD REVIEWS ABOUT THE COLLEGE AND AFTER VISITING AT THE OPEN DAY, INSTANTLY KNEW THAT VARNDEAN WAS THE PLACE FOR ME.”**



## ENGLISH LANGUAGE

### A LEVEL

If you are interested in the English language itself – how we use language for different purposes, how speech differs from writing, and whether gender makes a difference to language-use, then this will be the right course for you. You will explore a diverse range of topics, including how we shape our identities according to our gender, dialects, ethnicity/diversity & power, occupation and class. As you do so, you will develop the skills of analysis, grammar and writing. Students also learn about how the English language has evolved over the last 450 years and the ways in which children acquire speech and literacy.

During the course, you will have the opportunity to produce a variety of creative writing coursework from opinion articles, reviews and memoirs, worth 20% of the final grade. In the second year, you also collect your own data to undertake an Investigation unit, based on a specific linguistic area.

#### UNIT 1: Exam Language Variation: 35%

The language of identity  
Language change from 1550

#### UNIT 2: Exam Child Language: 20%

Speech or literacy development

#### UNIT 3: Exam Investigating Language: 25%

Research project on a key topic: Gender/ Power/ Journalism/ Dialect/ World Englishes

#### UNIT 4: Coursework Crafting Language:

Creative writing: 20%  
Two creative nonfiction texts & one commentary

### ENTRY REQUIREMENTS

Standard Advanced Level entry requirements

### ASSESSMENT

80% exam, 20% coursework



## ENGLISH LITERATURE

### A LEVEL

Studying English Literature offers us the opportunity to study who we are and the ways we live. It invites us to critically engage with exciting, interesting and challenging aspects of the world we live in and the ways writers present such issues.

We read, discuss, analyse and write on plays, novels and poetry from the past and the present. We study the ways in which writers use language, form and structure to convey meaning. We consider interpretations by different readers over time, as well as how culture and context influences readers and writers. All work is assessed through essays and you will learn how to write effective academic arguments with a range of textual, critical and contextual support.

**Please Note:** Studying English Literature at A Level is an invitation to engage in and examine critical and theoretical discourse on challenging and sometimes difficult topics, all of which are dealt with intellectually and sensitively. You will also be expected to read at least two novels independently as preparation for study in class and for coursework. The ability to read novels independently is therefore essential, as is a commitment to writing essays.

### ENTRY REQUIREMENTS

Standard Advanced Level entry requirements

### ASSESSMENT

80% exam, 20% coursework



# MITCHELL CARTER

## STUDIED

English Language & Literature, Film Studies, Business Studies

## PREVIOUS SCHOOL

Peacehaven Community School

“I chose to come to Varndean College because I knew that not only would I receive the education I needed, but also the excellent support provided meant that I would be able to apply myself to my studies without the fear of it having a negative impact on my wellbeing.

I’ve always had a love of writing and knowing that journalism was my end goal, Film and English were my obvious choice of subjects. Then to broaden my horizons, I chose to study Business Studies so that when I entered my career path of being a media journalist, I could be adaptable when the need arose. I also participated in Board Games and Short Film enrichment which helped me to become more sociable and engage in activities which I enjoyed. During my time at Varndean, I have won two Business awards.

What I have enjoyed most about being at Varndean College is that I have felt valued, and the College has supported me when I have needed it during tough times. I have undergone major personal growth during my time here and feel like I am a better person. This would have not been possible if it hadn’t been for the support I have received.

I am now hoping to study Journalism at the University of West London with the plan afterwards of becoming a journalist focusing in media and critique.”

## WHAT NEXT?

Journalism, University of West London

“WHAT I HAVE ENJOYED MOST ABOUT BEING AT VARNDEAN COLLEGE IS THAT I HAVE FELT VALUED.”





## ENGLISH LANGUAGE AND LITERATURE

### A LEVEL

Combined English is a dynamic, exciting course for those who feel they have enthusiasm and skill in both areas. It involves examining literary texts to understand the speaker or writer's identity and how language works to create a voice. The course enables you to study a range of text-types, including fiction: novels, short stories and plays. Nonfiction varieties include memoirs, articles, online texts and conversational transcripts. There will also be opportunities to create presentations, watch performances of key texts on-screen or to visit theatre productions.

If you enjoy reading fiction and nonfiction, appreciate the creative and analytical aspects of English work and have a passion for the written and spoken word, this will be the right course for you.

The course consists of two exams worth 40% each 'Voices in Speech and Writing', and 'Varieties in Language and Literature' and coursework 'Investigating and Creating Texts' worth 20%. Full details can be found on our website.

**Please note**, studying English at A Level is an invitation to engage in and examine texts which can sometimes include challenging and difficult topics

### ENTRY REQUIREMENTS

Standard Advanced Level entry requirements

### ASSESSMENT

80% exam, 20% coursework

## ENVIRONMENTAL SCIENCE

### A LEVEL

The word environment is used prolifically and features in many of the key debates within our society. This course will suit you if you want to understand what lies behind the terms used in the media so that you are able to make a knowledgeable contribution to debates or pursue a career in environmental/earth sciences. Students who enjoy a multi-disciplinary approach to learning and have a keen interest in the sustainability of our planet will find this course engaging and thought provoking.

You will gain an understanding of the physical and biological environment, as well as exploring topics such as pollution, climate change and energy. You will also learn field research techniques and using environmental data to make decisions or reinforce arguments.

This course mixes well with Geography or Biology and may also appeal to you if you are taking Politics, Business or Social Science, or want to develop your understanding of environmental issues.

### ENTRY REQUIREMENTS

Standard Advanced Level entry requirements

#### Plus:

Grade 4 in two GCSE Science subjects,

Grade 4 in GCSE Maths preferred

GCSE Geography is useful

### ASSESSMENT

100% exam



# FILM PRODUCTION

## CTEC LEVEL 3 EXTENDED CERTIFICATE IN CREATIVE MEDIA

(EQUIVALENT TO 1 A LEVEL)

Film Production (Creative Media Production) is an exciting two-year course which provides the knowledge and hands on experience for students who have a keen interest in working in the creative media industries. This course would particularly suit you if you have a fascination with all the many aspects of the Creative Media industry and how it works, want to know how to produce professional media artefacts and are keen to work following industry processes, prefer to work on a modular basis and your strength is in producing creative and technical practical work, demonstrate a strong personal interest and commitment to the subject because much of the production work will need to be completed outside of lesson hours, and are considering a career in the Creative Media sector, as you will work on projects and create a full portfolio of work.

You will study filming and editing techniques, working on a film set as a professional production crew, choosing a career pathway and specialism, studying how the industry is structured, creating a professional showreel, and finding work as a media practitioner.

Students will need to commit to completing both years in order to achieve the qualification. Assessment is continuous throughout the year. You must be committed to regular attendance, working in groups and meeting strict deadlines. You will also be required to travel independently off site without supervision for filming or recording project work.

### ENTRY REQUIREMENTS

Standard Advanced Level entry requirements

### ASSESSMENT

You will be assessed in a variety of ways: tutor observation, portfolio work, research assignments, individual and group work, and through working on project briefs.



# FILM STUDIES

## A LEVEL

If you are enthusiastic about cinema and would like to develop greater understanding and appreciation of films and also acquire practical skills, then this course is for you. You will study films from a variety of eras and cultures such as Hollywood in the 1950s and 1960s, mainstream and independent modern American filmmaking, British cinema and also focus on non-English language films from Europe and beyond.

You will also learn about a wide variety of film forms including 1920s silent films, documentaries, short films and experimental films. There is also a practical coursework element (30% of the entire course) with students given the opportunity to plan and create a make a short film of their own.

### ENTRY REQUIREMENTS

Standard Advanced Level entry requirements.

### ASSESSMENT

70% exam, 30% coursework



**“VARDEAN COLLEGE REALLY STOOD OUT TO ME FROM ALL THE OTHER COLLEGES I VISITED.”**

SEFF EDWARDS KHAN, EX DOROTHY STRINGER



## FORENSIC SCIENCE & CRIMINAL INVESTIGATION \*

### BTEC LEVEL 3 DIPLOMA

(EQUIVALENT TO 2 A LEVELS)

If you enjoy science at school and are interested in pursuing a career in science, forensic investigation or criminology, this is the course for you!

In Year 1 you will study Chemistry, Physics and Biology and will complete a number of assignments and many practical investigations.

In Year 2 you collect and analyse forensic evidence from a mock crime scene and prepare a witness statement to present in a mock court scenario. You will also study forensic genetics and the use of DNA in investigations, criminology and criminal investigation in practice.

You will study:

- Principles and Applications of Science
- Practical Scientific Procedures and Techniques
- Science Investigation Skills
- Forensic Investigation Procedures in Practice
- Applications of Criminology
- Criminal Investigation Procedures in Practice
- Physiology of Human Body Systems
- Forensic Genetics

### ENTRY REQUIREMENTS

Standard Advanced Level entry requirements

**Plus**

Grade 5 in GCSE Maths

Grade 5 in GCSE Core Science and Grade 5 in Additional Science

**Or**

Grade 5/5 in GCSE Combined Science

### ASSESSMENT

Internal assignments and external assessment.

## FRENCH

### A LEVEL

French is a beautiful, rich, melodious language and learning to speak and use it fluently is invaluable and enjoyable. You will gain a highly respected qualification and at the same time develop the skill of communicating fluently in a language that is spoken all over the world, not just in France. Studying grammar enables you to understand how the language really works so that you can express your opinions spontaneously, rather than by learning phrases by heart, and studying the cultures and topical issues of the French-speaking world will help you understand the similarities and differences between the English and French languages and their peoples. Research shows that this subject develops your confidence and personal communication skills as well as your problem solving, creative and critical thinking skills, all of which give you an edge in the job market.

You will study social issues and trends, including changes in French society and the political and artistic cultures in French-speaking countries, immigration and French multicultural society, occupation and resistance (ie occupied France, The Vichy regime and The French Resistance).

### ENTRY REQUIREMENTS

Standard Advanced Level entry requirements

**Plus**

Grade 6 in GCSE French

### ASSESSMENT

100% exam





## GEOGRAPHY

### A LEVEL

A brief look at the topics listed below will show you that as a Geography student you will study some of the most important and challenging issues facing the world. Through your studies you will develop the skills and knowledge needed by those in the public, voluntary and business sectors to make informed decisions on which the future of our planet depends. The skills learned are transferable and will open the door to many career options.

We expect you to take an active part in lessons, to ask questions and draw your own reasoned conclusions about key issues based on your research.

Topics include: The water cycle and water insecurity, globalisation, regeneration, carbon cycle and energy security, coastal landscapes or glaciation, tectonics processes and hazards, migration, super powers and geo politics, as well as fieldwork and coursework.

### ENTRY REQUIREMENTS

Standard Advanced Level entry requirements

#### Plus

Grade 4 or above in GCSE Maths and Science and Grade 4 or above in Geography (if taken)

### ASSESSMENT

80% exam and 20% coursework



## GERMAN

### A LEVEL

German classes are varied and dynamic, including lots of conversation practice, role plays and grammar exercises to help you become a fluent speaker. You will use a wide range of resources, develop your language skills and broaden your knowledge of German culture. You will have the opportunity to participate in a trip abroad, for example, Berlin or Vienna. There are weekly conversation sessions in small groups or in pairs with the language assistant.

National statistics prove that if you have a language qualification you have a significantly greater chance of being employed and of landing the best jobs and yet only one in ten people continue with a language after GCSE. So, if you speak German, you will be in demand in just about every field of employment. Make sure you are one of the people who have that advantage!

You will study social development in Germany, political and artistic culture in the German-speaking world. Immigration and German multi-cultural society, the Reunification of Germany

### ENTRY REQUIREMENTS

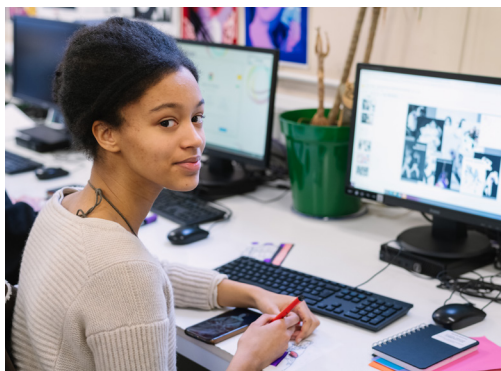
Standard Advanced Level entry requirements

#### Plus

Grade 6 in GCSE German

### ASSESSMENT

100% exam



## GRAPHIC DESIGN

### A LEVEL

Graphic designers communicate ideas and information in a visual way using a combination of text and images.

Our graphics course will allow you the opportunity to develop a wide range of graphic design skills using both handmade and digital materials, techniques and processes. You will explore type, image, colour and layout through a series of fun practical tasks developing your confidence and creativity. Graphic design projects lead to a variety of different outcomes including type design, illustration, magazine layout, packaging, poster design and even motion graphics.

In the first year, you will learn how to use Adobe Photoshop through tutorials and workshops. You will also explore the work of other artists and designers, critically evaluating and responding to various design styles and movements in order to develop your own creative ways of working.

In the second year, you will develop your own project theme in an area that personally interests you. This can include exploring the local environment, cultural identity, promoting health and wellbeing and / or investigating social and political issues as well as many other personal themes.

### ENTRY REQUIREMENTS

Standard Advanced Level entry requirements

#### Plus

Grade 5 in GCSE Art, Design or Technology based subject

#### Or

Merit or above at BTEC Level 2

#### Or

If GCSE Art, Design or Technology have not been taken, suitably qualified students with a good portfolio of work demonstrating your skills will be considered. You can submit a combination of drawings, photographs, collages, sketches for logos and/or digital design work to demonstrate your creativity, imagination and technical ability.

### ASSESSMENT

60% coursework, 40% external assignment

## HEALTH & SOCIAL CARE \*

### BTEC LEVEL 3 EXTENDED CERTIFICATE

(EQUIVALENT TO I A LEVEL)

If you are interested in a career in the health sector, social care sector or teaching, you will find this course of particular benefit. It provides an insight into health and social care professions with varied and exciting links to all aspects of health and social care.

The course consists of four units; two of these are externally examined and two are internally assessed coursework. This programme will be delivered over two years.

**UNIT 1:** Human Lifespan Development (externally assessed), focuses on understanding human growth and development across various life stages, including factors influencing health and the roles of health and social care professionals.

**UNIT 2:** Human Biology and Health (externally assessed), explores the structure and functioning of the human body and its systems, common disorders, and their impact on health.

**UNIT 3:** Health and Social Care Practice (internally assessed), introduces core principles, values, legislation, and societal factors influencing health outcomes. It also looks into personalisation and different challenges and the strategies to overcome them.

The final unit is an optional unit (details to be confirmed)

### ENTRY REQUIREMENTS

Standard Advanced Level entry requirements

### ASSESSMENT

The course will be assessed internally through course work and externally through exams and research project.





## HISTORY - EARLY MODERN

### A LEVEL

Taking Early Modern History enables you to investigate some of the most dramatic events, issues and personalities from European and British history. The course focuses on the 16th and 17th centuries – a period of great change and conflict.

In Year 1 we will develop a detailed understanding of the 17th Century revolution in Britain by focusing on Charles 1st and the origins and course of the Civil Wars, as well as perhaps the most controversial period in our history – our period as a republic under Oliver Cromwell and the restoration of the monarchy under Charles 2nd. You will also trace the theme of revolution through to 18th Century France.

In the second year you will investigate the phenomenon of the witch hunts in Europe and North America. To what extent was this the result of religious changes during the Reformation and why were the majority of victims women, and why did the hunts come to an end?

### ENTRY REQUIREMENTS

Standard Advanced Level entry requirements

### ASSESSMENT

80% exam, 20% coursework



## HISTORY - MODERN

### A LEVEL

Investigating the recent past can help us understand the lives we live today. As a Modern History student you will have the opportunity to study and debate some of the great controversies of the 19th and 20th centuries. Was Stalin simply a 'Red Tsar'? Was Mao a dictatorial tyrant or a great reformer? In Britain, why did it take working women and men so long to get the vote? You will be encouraged to reach your own conclusions about the past and develop a range of historical skills over the two years of the course.

Studying Modern History may also give you the chance to experience the past first-hand, through visits to places such as Russia, land of the Tsars and birthplace of the famous communist revolution. Or explore your course work theme in Italy or America.

### ENTRY REQUIREMENTS

Standard Advanced Level entry requirements

### ASSESSMENT

80% exam, 20% coursework



**"WHEN I CAME TO VARNDEAN, I IMMEDIATELY FELT IT WAS A COMFORTABLE AND SUPPORTIVE ENVIRONMENT."**

DAISY HANNIGAN, EX LEWES OLD GRAMMAR

# LYDIA RAE

## STUDIED

Early Modern History, Classical Civilisation, Textiles + EPQ

## PREVIOUS SCHOOL

Patcham High School

“On visiting Varndean College at one of its Open Days, I really liked the atmosphere and the tutors. I also preferred the combination of topics studied within the subjects over anywhere else. I chose to study History and Classical Civilisation because I had previously studied these subjects at GCSE level and wanted to continue with them. I added Textiles because it gave me a balance of a creative subject alongside two essay-based subjects. I had never studied Textiles previously so taking a new subject from scratch was really fun.

For my enrichment activity, I chose first to attend Creative Writing, which taught me a lot about the mechanics and methods of storytelling, followed by the Aspire Programme which was incredibly helpful with my university application. I received assistance with my personal statement which I was very grateful for.

I enjoyed meeting so many people and making new friends whilst at Varndean and I couldn't have wished for my college experience to have gone any differently. I am now hoping to go to university to continue my studies in Classical Civilisation.”

## WHAT NEXT?

Classical Civilisation, University of Warwick

“I ENJOYED MEETING SO MANY PEOPLE AND MAKING NEW FRIENDS WHILST AT VARNDEAN AND I COULDN'T HAVE WISHED FOR MY COLLEGE EXPERIENCE TO HAVE GONE ANY DIFFERENTLY.”







## HISTORY OF ART

### A LEVEL

The study of art gives students valuable knowledge of world civilisations and helps them develop analytical skills that can be applied to understand how paintings, sculpture and architecture work to shape our social identities. This course allows students to develop particular interests and students will be encouraged to research and investigate art through first-hand experience.

In your first year you will study painting, sculpture and architecture, focusing on two themes: Identities in art and architecture and war in art and architecture. In the second year, you will study two periods: Invention and illusion: the Renaissance in Italy (1420-1520) and Pop life: British and American contemporary art and architecture (1960-2015).

### ENTRY REQUIREMENTS

Standard Advanced Level entry requirements

#### Plus

Grade 4 in GCSE English Literature or History

### ASSESSMENT

100% exam



**“TUTORS ARE INCREDIBLE. EVERYONE PUTS SO MUCH ENERGY INTO TEACHING US ENGAGING CONTENT.”**

ELISA OAKES, EX KING'S ACADEMY, RINGMER

## INFORMATION TECHNOLOGY \*

### BTEC LEVEL 3 EXTENDED CERTIFICATE

(EQUIVALENT TO I A LEVEL)

IT skills are highly valued in all aspects of business and society and there is a demand for people who have the skills to refine and apply new developments to the real world. This exciting course will enable you to develop your understanding of the latest technologies and to become a competent IT user and successful in the workplace. You will develop your technical skills in a wide range of industry-standard software packages.

In Year One you will study Cyber Security and Incident Management, as well as Creating Systems to manage information. In Year Two, you will study Information Technology Systems and Website Design, including html, css and javascript.

### ENTRY REQUIREMENTS

Standard Advanced Level entry requirements

#### Plus

Grade 4 in GCSE Maths

Grade 4 in GCSE IT or equivalent (desirable)

### ASSESSMENT

60% exam, 40% coursework



# INTERNATIONAL BACCALAUREATE DIPLOMA

The International Baccalaureate Diploma is an exciting and popular alternative to A Levels.

Varndean College has been an IB World School since 2008. We chose the IB because we think it offers something exciting and different: a broad, academically rigorous education for the whole person. The IB Diploma is taught world-wide and is internationally recognised and understood by universities and employers as excellent preparation for further study or employment.

Here at Varndean we like the IB Diploma because it challenges, encourages and inspires internationally-minded students to become caring, critical thinkers, ready for university study and a globally focused career and **we are currently the only state funded provider of the IB Diploma in the county of Sussex.**

The IB Diploma differs from A Levels in its breadth, as well as its integration as a complete programme of study. All students are required to study English literature, a modern foreign language, a humanities subject, natural science and maths. However, students have lots of options and opportunities to customise their Diploma to suit their needs, interests and career aspirations.

Students choose one course from each of the six subject areas, three at Higher Level and three at Standard Level. The content of Standard Level courses is smaller than that of Higher Level and they are usually a little less demanding academically meaning they are also taught over fewer hours. It's important to point out that if you choose the IB Diploma you are not studying towards 6 A-levels but you will have a few more lessons during the week than your peers studying A Levels!

You should seriously consider the IB if you:

- are a well-organised student who enjoys a wide range of subjects and activities and who is keen not to narrow your education too early
- want a course that will extend and challenge you personally and intellectually
- want a course that will encourage you to think independently and to speak and write well in more than one language
- want to keep all your university and career options open at 16 plus
- want an international qualification, which is recognised all over the world for your future career

## MEET OUR STUDENTS

### FLORA BURLEIGH

#### STUDIED

International Baccalaureate

#### PREVIOUS SCHOOL

Our Lady of Sion

"The IB seemed like the perfect alternative to taking A Levels because it didn't force you narrow down your choices. It's much more holistic and interdisciplinary, but also enforces extracurricular activities through the CAS programme. Subjects like Philosophy and Psychology particularly interested me because I'd never taken them before so they made me think about about the world in a new way.

I've really enjoyed the pace of learning that comes with the IB. As much as it can be crazy at times, it's amazing to look back and think about how much we have covered for each subject within the space of two years.

I've also enjoyed the people I've met studying the IB, it was unexpectedly an incredible community and hopefully I've made friendships that I'll cherish for the rest of my life."

#### WHAT NEXT?

Psychological & Behavioural Sciences,  
University of Cambridge



## MEET OUR STUDENTS

# LUKA MILES

### STUDIED

International Baccalaureate

### PREVIOUS SCHOOL

Worthing High School

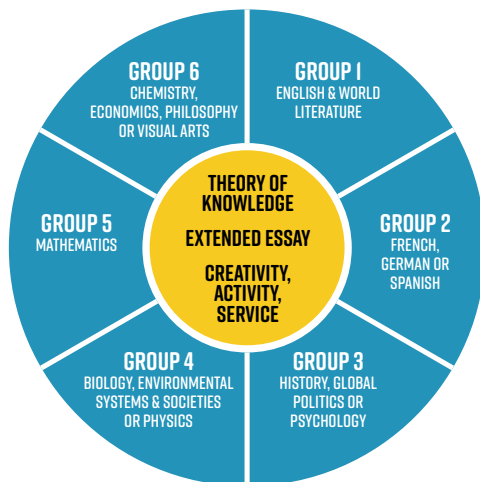
"I chose the IB because the structure allowed me to continue studying a broad range of subjects and keep many options open. My preferred subjects were Maths and Chemistry, but similarly I wanted to continue studying German, but not use up a full A Level. I have really enjoyed doing all the coursework in the IB, which has allowed me to delve deeper into the areas that have specifically interested me. With my Extended Essay, I investigated the causes of addiction from a psychological perspective.

Alongside the IB, I completed the Carbon Literacy qualification as part of the enrichment programme. The qualification raised my awareness as to what aspects of my daily life were positively and negatively contributing to the environment,

Looking back at my time at Varndean, I have most enjoyed the sense of community the College provides. Within the IB I've made new and strong friendships, to the extent where it feels like a second family. I am now looking forward to studying Osteopathy at Swansea University."

### WHAT NEXT?

Osteopathy, Swansea University



### WHAT DOES THE COURSE INVOLVE?

You choose one course from each of six subject areas (shown above), three at Higher Level and three at Standard Level.

The content of Standard Level courses is smaller than that of Higher Level courses.

Everyone also follows the Core Programme, which is made up of:

#### EXTENDED ESSAY:

4,000 words on a topic of particular interest in any subject

#### THEORY OF KNOWLEDGE:

A study of the foundations of knowledge

#### CREATIVITY, ACTIVITY, SERVICE:

A programme of extra-curricular activities



**"EXPERT TEACHERS USE THEIR SPECIALIST KNOWLEDGE TO DEEPEN STUDENTS' UNDERSTANDING."**

**"STAFF TEACHING THE INTERNATIONAL BACCALAUREATE PROBE EXPERTLY STUDENTS' KNOWLEDGE."**

**"STUDENTS ON THE IB COURSE MAKE OUTSTANDING PROGRESS. THEIR ACHIEVEMENT IS EXCEPTIONALLY HIGH AND WELL ABOVE THE INTERNATIONAL AVERAGE."**

OFSTED 2024

## MEET OUR STUDENTS

# ALBA BRAHAM

### STUDIED

International Baccalaureate

### PREVIOUS SCHOOL

Davison CE School

"I was attracted to the IB because of the academic challenge and the broad education it offered. It also encouraged me to try new subjects like World Literature and Philosophy that I would not have had the opportunity to learn otherwise. During my time at Vardean, I received gold awards in the UKMT Senior Maths Challenge, going on to compete in the Kangaroo and British Maths Olympiad challenges. I also competed in Royal Holloway's National Psychology Competition, having the opportunity to collaborate with other students and learn of the innovative research being conducted at the university. I have spent the last two years with the most dynamic and supportive group of people."

### WHAT NEXT?

Maths, university to be decided



## THE SUBJECTS ON OFFER

	STANDARD LEVEL	HIGHER LEVEL
<b>1. ENGLISH &amp; WORLD LITERATURE</b>		
English & World Literature	●	●
<b>2. SECOND LANGUAGE</b>		
French	●	●
German	●	●
Spanish	●	●
French for beginners (Ab Initio)	●	
<b>3. INDIVIDUALS AND SOCIETIES</b>		
History	●	●
Global Politics	●	●
Psychology	●	●
<b>4. EXPERIMENTAL SCIENCES</b>		
Biology		●
Environmental Systems & Societies (ESS)	●	
Physics	●	●
<b>5. MATHEMATICS</b>		
Analysis and Approaches	●	●
Applications and Interpretations	●	
<b>6. ADDITIONAL SUBJECTS</b>		
Chemistry		●
Economics	●	●
Philosophy	●	●
Visual Arts	●	●



### ENTRY REQUIREMENTS

A mixture of at least **7 GCSEs at Grade 6 or above**, including English, Maths and Science.

In addition, certain subjects at both Standard and Higher Level have particular subject requirements.

For further information please refer to our website or separate IB Prospectus.

### ASSESSMENT

All six subjects are scored out of 7 points, meaning whether you study something at HL or SL it counts equally towards your final score. The maximum possible score is 45: seven points for each subject, plus a maximum of three for the Core.

In order to pass the Diploma, you need to achieve a minimum of 24 points.

All final written exams take place in May of Year 2 and the results are published in July.

In many subjects there is a substantial amount of coursework and assessed oral presentation. Both the Extended Essay, and Theory of Knowledge are assessed by an externally-marked coursework essay.

**Please note; students wishing to study at university abroad should check country-specific requirements and the entry requirements of individual universities on the IBO website.**

If you would like to find out more about the IB Diploma, come along to our

## IB PRESENTATION EVENING

**TUES 8TH OCTOBER 2024**

**6.30pm - 7.45pm Doors 6pm**

No advance booking necessary

# DENEB MARDEN-RULL

### STUDIED

International Baccalaureate

### PREVIOUS SCHOOL

Hove Park

“Studying the IB allowed me to continue studying a range of very different subjects. This really appealed to me as I was keen to try new subjects which I had not previously studied at school, such as Economics and Psychology, whilst at the same time able to continue with subjects such as English and Biology. The teaching has been really inspiring, with lessons being very discussion based, applying theory to real world and current issues. This had made learning exciting and thought provoking. I also attended the Mandarin enrichment group which allowed me to extend my language learning outside of the IB. I also became a member of the Youth Parliament for Brighton & Hove and spoke in Parliament.”

### WHAT NEXT?

Economics, Politics & International Relations,  
University of Warwick





## LAW (APPLIED)

### BTEC LEVEL 3 EXTENDED CERTIFICATE

#### (EQUIVALENT TO 1 A LEVEL)

If you excel at coursework and practical tasks, then this could be the legal course for you. The BTEC course follows a similar programme as an A level but allows you to explore the law in the real world. You will have opportunities to visit local courts, meet magistrates, solicitors and barristers and have a working knowledge of where clients can obtain advice and funding for court. Lessons will involve research activities, creating legal information films, writing reports and legal letters and debating current issues. Topics for debate will include whether community sentences are too lenient? Should life mean life for murderers? Is the compensation culture out of control?

This course has direct links with business and public services courses and will allow you to personalise your learning/interests to the area of law/business you may eventually work in.

Topics include: dispute solving in the legal system (exploring civil law and negligence), understanding law making, applying the law (murder, manslaughter, property offences, police powers and general defences) and family law

#### ENTRY REQUIREMENTS

Standard Advanced Level entry requirements

#### ASSESSMENT

Two exams (one in Year 1 and one in Year 2) and internally assessed coursework

## LAW

### A LEVEL

Law is dynamic and ever changing; it regulates us in every aspect of our lives. Through studying law, you can learn to understand how and why the law affects you.

You will learn about law through a mixture of discussion, mock trials, debate and through visits to legal institutions. Regular speakers include a local barrister, solicitor and magistrates. The course aims to develop your ability to analyse and apply legal principles, construct legal arguments and draw appropriate conclusions. Throughout, critical evaluation of current legal issues will be high on the agenda. All of these skills are highly regarded by employers and make you more employable.

Topics include: murder and manslaughter – what's the difference? theft, robbery and burglary, defences (intoxication, insanity, self-defence consent), civil and criminal courts, the work and training of solicitors and barristers, parliamentary law making, Human Rights Law, the law of Tort, personal injury cases, the difference between law and morality.

#### ENTRY REQUIREMENTS

Standard Advanced Level entry requirements

#### Plus

Grade 5 in GCSE English

Grade 4 in GCSE Maths

#### ASSESSMENT

100% exam





## MATHS & FURTHER MATHS

### A LEVEL

Mathematics is an essential tool for everyday life. It gives you an important key to understanding the world we live in as you develop your mathematical skills. The problem-solving skills you will develop studying advanced level Maths are highly valued in most careers, and mathematical ability is very highly regarded by both universities and employers. We offer:

**Single Maths** - this is the regular Maths A level, examined at the end of your second year. The course is split into 2/3 Pure content, 1/6 Statistics and 1/6 Mechanics.

**Double Maths Course** - In this course, you would complete the regular Maths A level qualification at the end of your first year, before moving onto the Further Maths A level in your second year. This means that you would have gained two A level qualifications by the conclusion of the two years with us. The Further Maths A level comprises two Core Pure modules, and three additional modules: Further Pure 1, Further Mechanics 1, and Further Statistics 1.

### ENTRY REQUIREMENTS

Standard Advanced Level entry requirements,

**Plus**

Single Maths Course: Grade 6 in GCSE Maths

Double Maths Course: Grade 7 in GCSE Maths

### ASSESSMENT

100% Exam

## MEDIA STUDIES

### A LEVEL

The Media Studies A Level provides opportunities for students to explore a wide range of media products, forms and concepts, focusing on media language, representation, audiences, and industries.

Students develop critical analysis, research, practical production and communication skills. They engage with a wide range of media theory, learn about industry and business contexts, and study the subtleties of how media producers engage with their audiences. The course balances theoretical insights with practical applications, preparing students for careers in (among other subjects) media, journalism, and advertising. Media products explored on the course include music videos, marketing for Hollywood mainstream and British independent films, magazines, radio and computer games franchises.

Students also complete a cross-media production coursework unit (30% of the overall course) during which they plan and create media products based on a set brief, combining theoretical knowledge with practical skills.

### ENTRY REQUIREMENTS

Standard Advanced Level entry requirements

### ASSESSMENT

70% exam and 30% coursework



# MUSIC PRODUCTION

## RSL LEVEL 3 EXTENDED CERTIFICATE

(EQUIVALENT TO I.A LEVEL)

The Creative Music Industry course enables learners to develop practical skills in all aspects of the music production process. Learners will be able to complete full music production cycles, starting from initial creative production processes and taking their music through the mixing and mastering stages to create complete musical products. Learners will develop technical skills, as well as effective planning and project organisation through a course centred around practical music-making.

The course addresses both the in-the-box and out-of-the-box aspects of music production, from managing the signal path and setting up microphones for recording sessions to MIDI programming and sequencing skills. The skills developed over the course of the two years will enable learners to be comfortable in a wide range of music production environments and equip them with tools needed to make music independently, pursue music at a Higher Education level or seek employment within the music industry. To align with the practical nature of the course, learners are assessed through coursework sessions at regular intervals, promoting opportunities for progressive development and mastery of key skills across the two years. These skills are also supplemented through the music department's collaboration with local projects supporting young artists' development and opportunities to engage with local employers in the music industry, providing students with a range of opportunities to explore the multitude of potential roles they can pursue in music.

### ENTRY REQUIREMENTS

Standard Advanced Level entry requirements

#### Plus

Substantial music production experience, which can be demonstrated through either a GCSE or BTEC Level 2 music qualification (if taken), or a portfolio submission of music recently made in a DAW and accompanying annotated screenshots. Practical instrumental skills are helpful and recommended, but not essential.

### ASSESSMENT

100% coursework



# PERFORMING ARTS (ACTING)

## BTEC LEVEL 3 FOUNDATION DIPLOMA

(EQUIVALENT TO I.5 A LEVELS)

The BTEC Acting Diploma is a two-year intensive programme structured around the development of personal acting skills and preparing to work in the performing arts industry. This course is 100% coursework, internally assessed over four units. This is a highly recommended course for those focused on progression to drama training and careers in the performing arts. You will take part in practical workshops throughout the course, to develop your skills and techniques as an actor and work as part of a collaborative performance company. The course is based on a drama school training model and prepares you for working with discipline and imagination on scripted and devised performance projects. Theatre visits are an integral part of the course and there are opportunities for involvement in Brighton's vibrant theatre scene with performances in local venues.

### ENTRY REQUIREMENTS

Standard Advanced Level entry requirements

#### Plus

Grade 5 in GCSE Drama or Merit in L2 BTEC (if taken) or a background of successful experience in productions.

### ASSESSMENT

100% internally assessed on coursework and performance projects.

**Due to the qualification pathway of this BTEC course, you cannot take BTEC Performing Arts alongside BTEC Dance. You must choose one or the other.**



# PHILOSOPHY

## A LEVEL

Philosophy comes from the Greek words meaning 'love of wisdom'. It will involve you in thinking about thinking and learning to question basic beliefs, assumptions and ideas whilst searching for truth. Philosophy teaches you to think in a clear, logical and creative way that will help you in other subject areas and in most areas of life where critical and inventive thinking is valued. In Year 1 you will study Epistemology and Ethics and in Year 2, Metaphysics of God and Metaphysics of Mind.

Students who study Philosophy find it challenging and exciting and many say that it changes their outlook in ways that they find useful and rewarding. Enlightenment is not guaranteed, but studying Philosophy should make you and your life more interesting!

## ENTRY REQUIREMENTS

Standard Advanced Level entry requirements

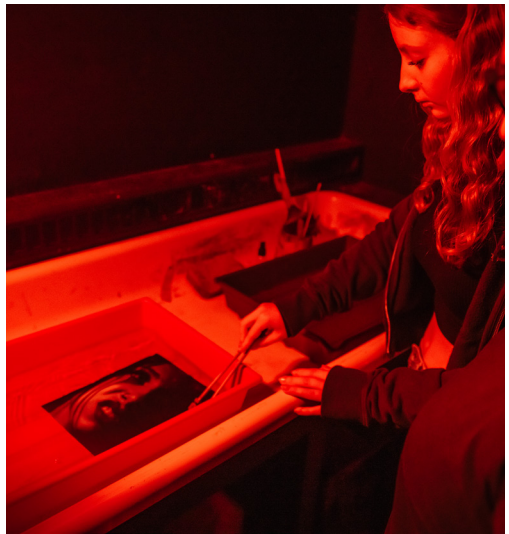
## ASSESSMENT

100% exam



**"I CHOSE VARNDEN BECAUSE IT SEEMED FULL OF PASSIONATE TEACHERS THAT I INSTANTLY KNEW I WANTED TO BE TAUGHT BY."**

**ALICE BURTON, EX WARDEN PARK ACADEMY**



# PHOTOGRAPHY

## A LEVEL

You will be introduced to a variety of photographic media, techniques and processes, including traditional black and white darkroom printing as well as digital photography. You learn to research photographers' work in depth, and link these ideas with your own work. You will be encouraged to explore ideas and push the boundaries of the medium, and develop your own individual creative concepts and approaches to photography. Understanding your SLR camera is key: using depth of field, movement, working with different films, lenses, filters and lighting. You will benefit from a wide range of facilities, including two darkrooms and a studio environment in Year 2

## ENTRY REQUIREMENTS

Standard Advanced Level entry requirements

**Plus**

Grade 5 in GCSE Photography (if taken)

**Or**

Merit or Distinction in BTEC Level 2 Award in Photography (if taken)

**Or**

Evidence of commitment to and aptitude for photography demonstrated through submission of work

## ASSESSMENT

60% coursework, 40% externally set assignment



## PHYSICAL EDUCATION

### A LEVEL

Learners will explore the academic aspects of physical education, sport and health, as well as reflecting on their own performance to critically analyse and evaluate practice.

The course will examine a breadth of theoretical areas including the scientific, socio-cultural and practical aspects of physical education through which learners will develop their knowledge, understanding and skills. Students will learn through both classroom and practical settings and seek to develop their appreciation of human performance as it relates to the world of sport and fitness.

Course content includes: applied anatomy and physiology, skill acquisition, sport and society, exercise physiology, biomechanical movement, sport psychology, contemporary issues in sport and practical performance.

The 30% non-exam assessment gives learners the opportunity to apply theory to their own sporting performance (as either a coach or athlete). It is advantageous for learners to regularly compete or coach in at least one sport at club level or above.

### ENTRY REQUIREMENTS

Standard Advanced Level entry requirements

#### Plus

Grade 4 in GCSE Science or PE (preferred)  
Performance at a competitive/club level in a sport of your choice

### ASSESSMENT

70% exam, 30% practical performance assessments and coursework

## PHYSICS

### A LEVEL

What is Physics? Basically, Physics tries to explain how the universe works as simply as possible, but no simpler. From Quarks to Quasars, Physics is all about understanding and predicting nature. Together we will look at how our world (and beyond) behaves and try to make sense of it. You will enjoy Physics if you want to find out about life, the universe and everything; develop models to explain how the world we live in works; sharpen your problem-solving skills and see how physics is used all around us.

You will discover that our ideas of how things work have changed over the centuries; scientists are not always 'right'. A theory only lasts until an experiment proves it wrong! Then we need a new one. The course places great emphasis on the practical uses of the subject and is divided into themes.

You still study all the Physics you would expect, it is just packaged differently and, we think, in a more exciting and enjoyable way. By the end you will see why Physics is so important to our world!

### ENTRY REQUIREMENTS

Standard Advanced Level entry requirements

#### Plus

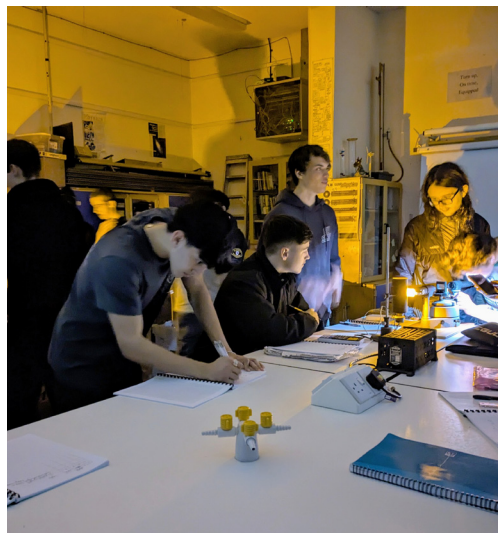
Grade 6 in both GCSE Physics and another Science GCSE  
Or 2 x Grade 6 in GCSE Combined Science

#### Plus

Grade 6 in GCSE Maths  
Students may also need to attend additional Maths support class if not taking A Level Maths.

### ASSESSMENT

100% exam





## POLITICS

### A LEVEL

Politics is about power: who has it, what they can and can't do with it and how they win and lose it. It is therefore about us, the people, as well as political parties, pressure groups, and international organisations such as the European Union and the United Nations.

Politics A Level is never dull or predictable. The course could hardly be more relevant as you discover what the political parties stand for, whether protest is effective and what your rights are in our democracy. You will learn to identify political arguments and come to understand how your life is affected by political activity. You will explore topics such as why people vote for particular parties – is it the media, the appeal of leaders or are there longer-term factors such as age or class? You will explore the impact of BREXIT, devolution and human rights legislation on the way the UK is governed.

You will also examine the 'nuts and bolts' of our political system; the power of the Prime Minister, the role of Parliament and the limitations placed on their powers by the Supreme Court.

Underpinning this are the political ideologies: liberalism, conservatism, socialism and nationalism. Studying these ideologies raises important questions of political philosophy, such as, what makes a just and fair society?

In the second year, you will study Global Politics. We live in a complex world with significant challenges, including global terrorism, poverty, economic instability, weapons proliferation, failing states and environmental degradation. Global Politics gives students an opportunity to develop an understanding of these issues and how the international community addresses them.

### ENTRY REQUIREMENTS

Standard Advanced Level entry requirements

### ASSESSMENT

100% exam



## PROTECTIVE SERVICES

### BTEC LEVEL 3 EXTENDED CERTIFICATE

#### (EQUIVALENT TO 1 A LEVEL)

This BTEC Certificate is designed to support learners who are interested in learning about the Uniformed Protective Services sector. It gives them a broad basis of study, designed to support progression to higher education when taken as part of a programme of study that includes other appropriate BTEC Nationals or A Levels.

This course is particularly suitable if you are studying in preparation for employment in the Protective Services Sector, particularly in job roles where you will be expected to use physical fitness skills, research skills or carry out customer-facing operational roles. It offers skills for working in the public sector but also transferable skills for any type of employment. It is suitable if you are considering a police or military career, but also if you are interested in developing, maintaining and protecting our society. You will learn by providing evidence gathered from realistic workplace scenarios and activities. You will gain experience through a wide range of tasks, visiting speakers and visits.

The course investigates a range of Protective Services, with topics including behaviour and discipline, skills for outdoor activities, team leadership and communication, and professional development.

### ENTRY REQUIREMENTS

Standard Advanced Level entry requirements

### ASSESSMENT

A series of assignments based on real organisations and projects. Exam and assignments

# PSYCHOLOGY

## A LEVEL

**Research Methods:** Knowledge and understanding of research methods, providing an opportunity to design and evaluate a novel piece of research.

**Psychological themes through Core Studies:** Focus on some of the central areas of investigation, looking at 'landmark' pieces of research that have helped to shape the course of Psychology. The aim is to develop essential critical thinking and independent learning skills. **Applied Psychology:** Exploration of themes and debates to draw students into the heart of psychology. Topics studied include:

Research methods and techniques

- Data recording, analysis and presentation
- Report writing
- Science in psychology
- Attention and memory
- Regions of the brain
- Brain plasticity
- Understanding disorders
- Responses to people in need
- Responses to people in authority

**Mental Health**

- Biochemical explanation of mental illness
- Cognitive neuroscience explanation of mental illness

**Criminal Psychology**

- Physiological and non-physiological explanations of criminal behaviour.
- The use of forensic evidence and offender characteristics in crime scene analysis

**Sport and Exercise**

- How an audience can facilitate or inhibit sports performance
- Benefits of exercise on mental health

## ENTRY REQUIREMENTS

Standard Advanced Level entry requirements

**Plus**

Grade 4 in GCSE Maths and Science

## ASSESSMENT

100% exam



# PSYCHOLOGY (APPLIED) \*

## BTEC LEVEL 3 EXTENDED CERTIFICATE

(EQUIVALENT TO I A LEVEL)

Psychology is the scientific study of the brain and behaviour. An understanding of human behaviour is fundamental to many jobs in society and the study of psychology at degree level and beyond remains a very popular choice. Studying

Applied Psychology will give you the opportunity to explore the theoretical, methodological and vocational context of Psychology.

This course is perfect if you prefer a combination of coursework and external exams with 58% examination, 42% coursework. Tutors use a variety of teaching techniques such as class discussions, group work and individual research to form the basis of each assignment. These are also supported with outside speakers and opportunities to attend conferences.

Topics studied include:

- Psychological Approaches and Applications
- Conducting Psychological Research
- Health Psychology
- Criminal and Forensic Psychology.

## ENTRY REQUIREMENTS

Standard Advanced Level entry requirements

**Plus**

Grade 4 in GCSE Maths and Science

## ASSESSMENT

58% exam, 42% coursework



## SOCIOLOGY

### A LEVEL

Sociologists ask questions about the behaviour of individuals and groups in society. If you are interested in people or if you want to understand what is happening in the world, you should find it enjoyable and thought-provoking. You will investigate issues affecting your life such as crime and deviance, education, health, global development, and inequalities in terms of gender, social class and ethnicity.

You will also learn about the research methods that Sociologists use to investigate society. We try to understand how society operates and why problems sometimes arise. You will not be told what to think, nor is it just a lot of facts to be learnt by heart.

We encourage you to question things people take for granted and help you work out your own ideas based on evidence and theories from different sociological perspectives, such as Marxism, Functionalism, Feminism and Postmodernism.

### ENTRY REQUIREMENTS

Standard Advanced Level entry requirements

### ASSESSMENT

100% exam

## SPANISH

### A LEVEL

Spanish is spoken by 470 million people worldwide and it is growing in popularity all the time. If you enjoy being able to communicate in another language and if you are interested in the culture and society of the Spanish speaking world, then we have the course for you.

You will study the evolution of Spanish society, the political and artistic cultures in Spanish-speaking countries, immigration and Spanish multicultural society, the Franco years and the transition towards democracy (ie the Spanish Civil War, the dictatorship of Franco, the transition from dictatorship to democracy)

### ENTRY REQUIREMENTS

Standard Advanced Level entry requirements,

#### Plus

Grade 6 in GCSE Spanish

### ASSESSMENT

100% exam



**"I HAVE MADE SO MANY AMAZING FRIENDS AND DEVELOPED LOTS OF ACADEMIC SKILLS WHICH I FEEL HAVE PREPARED ME WELL FOR UNIVERSITY AND THE FUTURE IN GENERAL."**

**RUBY NUNNS, EX BURGESS HILL ACADEMY**



## SPORT & EXERCISE SCIENCE

### BTEC LEVEL 3 DIPLOMA

(EQUIVALENT TO 2 A LEVELS)

The programme encompasses areas of study from physiology, psychology and social issues, to sports coaching, leadership, health & fitness, as well as practical performance analysis and development. Sessions are a mixture of academic theory with applied vocational practice, aimed to develop your knowledge and performance skills as a great pathway to study at university or step into a career in the sports industry.

Students study topics in sport and exercise physiology, functional anatomy, sport and exercise psychology, field and laboratory-based fitness testing, coaching for performance and fitness, biomechanics in sport and exercise science, special fitness training, applied research methods, plus a research project

### ENTRY REQUIREMENTS

Standard Advanced Level entry requirements,

**Plus:**

Minimum Grade 4 in GCSE Science

### ASSESSMENT

Exams, coursework assignments and practical assessments.

## SPORT

### BTEC LEVEL 3 EXTENDED CERTIFICATE

(EQUIVALENT TO 1 A LEVEL)

### BTEC LEVEL 3 DIPLOMA

(EQUIVALENT TO 2 A LEVELS)

The programmes encompass areas of study from physiology, psychology and social issues, to sports coaching, leadership, health & fitness, as well as practical performance analysis and development. Sessions are a mixture of academic theory with applied vocational practice, aimed to develop your knowledge and performance skills as a great pathway to study at university or step into a career in the sports industry. Students can study different sizes of the Sports BTEC, running for two years alongside other A Levels or Vocational Qualifications.

Students study topics in anatomy and physiology in sport, fitness training and programming, professional development in sport, sports leadership, fitness testing, sports psychology, practical sports performance, coaching for performance, sports business, and skills acquisition.

### ENTRY REQUIREMENTS

Standard Advanced Level entry requirements,

### ASSESSMENT

Exams, coursework assignments and practical assessments



# OTHER ADDITIONAL SPORTS COURSES

**We offer the opportunity for students to undertake industry led vocational qualifications to support their Level 3 programme.**

These can be studied as an additional course alongside their A Levels and BTECs to enhance their employability opportunities as well as their knowledge and skills in coaching and fitness.

These courses qualify students to work independently within a professional environment, such as fitness and sports coaching. In the past students have gained employment directly from studying these courses and have gained paid work at a variety of organisations including, David Lloyd gym, Freedom Leisure, The Gym Group. They have also delivered their own sports coaching sessions for local school providers and coaching organisations.

## GYM INSTRUCTING

### LEVEL 2 CERTIFICATE

Level 2 Certificate in Gym Instructing provides learners with the knowledge and skills that are needed to plan, deliver and supervise safe and effective exercise programmes within a gym or health club environment.

Topics include; theoretical study on the human body in action, health and nutrition, training principles, fitness programming and working in the fitness industry. You will learn how to instruct fitness sessions in the gym, teaching different techniques and training methods to clients, as well as developing training programmes and reflective performance. This is an excellent course for those wishing to enter the health and fitness sector with a wealth of career opportunities.

This qualification is awarded by Active IQ and professionally recognised by The Register of Exercise Professionals (REPs) and the Chartered Institute for the Management of Sport & Physical Activity (CIMSPA), which allow you to work in the fitness industry. This course is aimed predominantly at second year students wishing to enter the fitness industry after college. However, first year students will be considered.

### ENTRY REQUIREMENTS

Standard Foundation Level course requirements. You will be required to complete an early assessment based on your capabilities within a fitness environment. Experience of gym-based exercises, including resistance training methods and equipment.

The course requires physical exertion and individual participation. Therefore, a degree of physical fitness is essential.

### ASSESSMENT

Professional competency through observation of practical instructing, coursework, multiple choice exam, portfolio of evidence.

## HIGHER SPORTS LEADERS

### LEVEL 3 CERTIFICATE

The Level 3 Certificate in Higher Sports Leaders course is aimed at any students wishing to develop their leadership and sports coaching skills to support the growing numbers of sports leaders who make sport such a vibrant part of community life today.

Students will learn how to plan and lead activity sessions and run sports events. They will work with children of different ages and abilities and support community sport activities. The course is a mixture of theory and practical activity that includes sports leading in the college environment, coaching in a range of local schools and volunteering at community clubs. This course links perfectly to voluntary work and participation in sport outside of college.

This course is for Level 3 students to add to their programme of study in Year 2. Students will be expected to undertake 30 hours of volunteering across the year in a range. The College can help in setting these placements up.

### ENTRY REQUIREMENTS

Standard Foundation Level course requirements. Experience of leading or coaching in school or the community or a passion to enter this pathway is essential.

### ASSESSMENT

Practical sessions, voluntary leadership hours and a written leadership logbook.





## TEXTILES

### A LEVEL

In Textiles you will explore colour, texture and imagery using both traditional and unconventional materials. Our well-equipped specialist studio will allow you to explore and experiment with a wide range of techniques and materials. You will develop themes from your own personal experiences and observations, investigate ideas and research the work of other artists and designers. You will be taught by experienced and supportive tutors who have many years of experience in both teaching and creating.

From common starting points, you will progress in an individual direction. In the second half of Year Two, an externally set assignment gives you the opportunity to demonstrate all your creative abilities. Examples of project titles include 'Lost & Found' 'Transitions' and 'The Elements'

### ENTRY REQUIREMENTS

Standard Advanced Level entry requirements

**Plus**

Grade 5 in GCSE Art or Textiles

**Or**

Merit or above in BTEC Level 2 First Certificate in Art and Design

**Or**

If GCSE Art, Textiles or Technology have not been taken, suitably qualified students with a good portfolio of work will be considered.

### ASSESSMENT

60% coursework, 40% externally set assignment



## TRAVEL & TOURISM

### BTEC LEVEL 3 EXTENDED CERTIFICATE

#### (EQUIVALENT TO 1 A LEVEL)

If you are interested in becoming one of the professionals needed to plan and manage tourist attractions, work in holiday resorts, organise tours, run travel agencies and tour operators or work in passenger travel by land, sea and air, this course could be right for you.

The course is intensive and requires significant use of IT to conduct independent research. You will have opportunities to work in teams and individually. Our teaching staff have extensive experience of working within the travel industry and have numerous connections to individuals still working within the trade. We also organise many trips and visits as well as inviting speakers from key industry organisations.

You will study The World of Travel and Tourism, Global Destinations, Principles of Marketing and Visitor Attractions.

### ENTRY REQUIREMENTS

Standard Advanced Level entry requirements

### ASSESSMENT

Controlled assessments and exam



# LOUIE SHUBBAR

## STUDIED

Textiles, English Literature, Politics

## PREVIOUS SCHOOL

Home Educated

“I felt so drawn to Varndean College because of its welcoming environment and its focus on student wellbeing. Being home schooled, I felt it was important to choose a college where I would be supported, whilst at the same time pushed to grow both intellectually and as a person. Varndean really felt like a place where I would flourish and I was also so motivated by their outstanding visual arts department.

Choosing Textiles was an absolute must because I have always loved making clothes and wanted to learn new skills which would take my work to new heights. I chose English Literature because of my love for reading and it felt important to understand and analyse literature. Politics was my third option because I wanted to understand our constantly changing and evolving political system.

Textiles has definitely been the course I have enjoyed most and I've been given many exciting opportunities, from modelling one of my pieces in a college photoshoot, to attending exhibitions in London. Textiles has given me an incredible skill set in an array of techniques, from stitching, printing, weave, crochet and knit, to methods of fabric manipulation like Shibori. It's also given me the ability to research other artists and infuse inspiration from their work into my own, from the sketching progress, to making our final pieces. I have felt so supported and nurtured in my lessons and I definitely wouldn't be where I am today without the help of the Textiles department.

Whilst at Varndean I also attended the Politics Society which offered the chance to listen to MPs and political figures and I even managed to undertake some work experience with Citizens UK. I also attended the Ethnicity, Identity and Culture group, which provided an environment to learn about other cultures. We organised a Culture Day which was an amazing opportunity to showcase the array of different cultures at college.

Varndean has really helped me grow as a person and made me feel ready to go out into the world, more thoughtful and compassionate, and with new friends and companions for life. I am now going to study Fashion Design Technology at university and hope one day to be the creative director of my own fashion label!”

## WHAT NEXT?

Fashion Design Technology: Menswear,  
University of the Arts London

“VARNDEAN REALLY FELT LIKE A PLACE WHERE I WOULD FLOURISH AND I WAS ALSO SO MOTIVATED BY THEIR OUTSTANDING VISUAL ARTS DEPARTMENT.”





## ART & DESIGN

### GCSE

This is a practical and creative one-year course where you will look at the work of a variety of artists and take inspiration from them to create your own art.

This course will develop your practical skills, your critical knowledge and make you a more confident artist. You will explore different themes and a variety of materials and processes (drawing, painting, printmaking, collage, sculpture and textiles). You are assessed on your ability to develop ideas, experiment with practical materials, record ideas and present successful outcomes.

There is a practical coursework unit and a practical examination. Most materials you need will be provided in the studio but there is a charge for these. Students need to be committed to spending time on art, as there will be weekly independent study tasks. Students who do well can progress to A Level Art, Textiles, 3D Design, Graphic Design or Photography.

### ENTRY REQUIREMENTS

Standard Foundation Level entry requirements

**Plus:**

Grade 3 in GCSE Art, or Textiles (if taken)

**Or**

Provide a portfolio of your art/design/photography work at interview



## ENGLISH

### GCSE

This new syllabus is a fast-track, one-year GCSE English Language course involving wider reading and building on written and spoken skills.

There are two units for this qualification:

#### PAPER 1:

- A written exam (1 hour/45 minutes)
  - 50% of GCSE/ 80 marks
- Analysing a literature fiction text and writing descriptively

#### PAPER 2:

- A written exam (1 hour/45 minutes)
  - 50% of GCSE/ 80 marks
- Analysis/comparison of 19th/20th/21st Century non-fiction texts and writing to persuade

Please note that studying at GCSE is an invitation to occasionally engage in and examine challenging and difficult topics and texts.

#### NON-EXAM SPOKEN ASSESSMENT:

(This mark is carried through from school, if you have already done it.) If you arrive with a Grade 4 in GCSE English Literature, you do not have to re-sit English Language GCSE, but it may be useful especially if you are considering going to university or for future employment.

### ENTRY REQUIREMENTS

Standard Foundation Level entry requirements

## MATHEMATICS

### GCSE HIGHER LEVEL

### GCSE FOUNDATION LEVEL

### NUMBER & MEASURE - LEVEL 1

Mathematics qualifications improve your chances of employment considerably. Most jobs include some degree of measurement, money handling and mental arithmetic and a large number of jobs will require some use of skills such as percentages. You must study Maths GCSE if you do not already have a Grade 4 in GCSE Maths upon enrolment at college. This course can be taken alongside Advanced Level courses.

### ENTRY REQUIREMENTS

Standard Foundation Level entry requirements  
Plus, for GCSE Higher Level - Grade 4 in GCSE Maths is required.  
Must be taken for a specific and appropriate progression aim

## PHOTOGRAPHY

### GCSE

This is a practical and creative one-year course and you will study the work of photographers. You will learn about camera technique and be expected to shoot on location and in the studio. You will explore different themes (e.g. landscape and portraiture) and also experimental approaches to photography (e.g. from traditional techniques such as Sunprints & Photograms to digital manipulation using Adobe Photoshop).

There is a practical coursework unit and a practical 10-hour final examination. You do not need your own Digital SLR camera as you will be able to use College cameras, but there is a charge for materials.

On this course students need to be fully committed to embracing the use of PCs, as Adobe Photoshop and Google Classroom for Digital Logbooks are predominantly used. There will be independent study tasks to complete each week. Successful students are able to progress to A Level Photography the year after.

### ENTRY REQUIREMENTS

Standard Foundation Level entry requirements  
**Plus:**  
Grade 3 in GCSE Art, Graphics or Textiles (if taken)  
**Or**  
Provide a portfolio of your art/design/photography work at interview



## SCIENCE

### GCSE BIOLOGY

### GCSE TRILOGY (DOUBLE) SCIENCE

If you need a Science or wish to progress to a Level 3 Science course, then these courses are for you. Most students will have followed a GCSE Science double award or single separate Science at school so these courses will have a large overlap. We offer either separate GCSE Biology or Trilogy Science (Double Science).

For Biology you will carry out eight practicals over the course and for Trilogy Science you will carry out sixteen.

### ENTRY REQUIREMENTS

Standard Foundation Level entry requirements including:  
2 x Grade 3 in GCSE Science  
Grade 3 in GCSE Maths

## SOCIOLOGY

### GCSE

Sociology is the study of human society; it draws on a variety of viewpoints in order to understand the social world around us. In this course you will learn about how society shapes people's ideas and behaviour and you will relate this to your own experience of living in British society. You will also study how societies change over time and how societies differ across cultures. This course will help you to think critically about the world and explore different perspectives on society by drawing on sociological theories and research evidence. You will study the following areas in detail: Family, Education, Crime & Deviance, Social Stratification and Research Methods.

### ENTRY REQUIREMENTS

Standard Foundation Level entry requirements.

## BUSINESS

### BTEC LEVEL 2 AWARD

The course will qualify you for a wide range of jobs as you will develop transferable skills which can be used in any one of the many businesses on the south coast. Previous students have found employment in areas as diverse as retail, leisure and creative industries, although a growing number are choosing to progress onto the next stage with a Level 3 course. The course is suitable for students considering continuing on to Business at Level 3 BTEC or A level.

Units:

- Introduction to business
- Finance for business
- Enterprise in the business world
- Promoting a brand

The course is assessed by 75% coursework and 25% online assessment.

### ENTRY REQUIREMENTS

Standard Foundation Level entry requirements

## CARING FOR CHILDREN

### NCFE LEVEL 2 INTRODUCTORY CERTIFICATE

#### 'INTRODUCING CARING FOR CHILDREN AND YOUNG PEOPLE'

(Incorporating skills for working with young children and awareness of parenting skills, safeguarding and equalities and the importance of play).

This course is taught in one year and if you are interested in working with children in the future, then this could be the course for you. The course covers: patterns of child development (0-5), promoting children's development through play and aspects of protecting children in a safe environment. An interest in children is essential. The course is all coursework based and is good preparation for those wishing to progress to a Level 3 course and apprenticeships.

### ENTRY REQUIREMENTS

Standard Foundation Level entry requirements

## FILM PRODUCTION

### CTEC LEVEL 2 AWARD IN MEDIA PRODUCTION

This course is ideal if you want to understand more about the Creative Media industry and how it works, whilst developing your own creative ideas, skills and abilities. Topics include:

- Researching the TV & Film industry and how it is structured
- Developing ideas for moving image work
- Shooting and editing your own moving image work

This is a 100% coursework course and therefore assessment is continuous throughout the year. You must be committed to regular attendance, meeting strict coursework deadlines and working in groups. You will also be required to travel independently off-site without supervision for filming moving image work.

### ENTRY REQUIREMENTS

Standard Foundation Level entry requirements

**plus:**

Prior successful experience of media or photography education or a portfolio of still or moving images is essential.



## HEALTH AND SOCIAL CARE

### BTEC FIRST AWARD IN HEALTH AND SOCIAL CARE

This course is taught in one year and is equivalent to one GCSE. If you are interested in working within the health care sector in the future, then this is a stepping stone to a fulfilling career. The course covers a range of topics including: human lifespan development, equality in the health and social care sector, effective communication, food and nutrition. An interest in the care sector is essential. The course consists of one examined unit and three pieces of coursework.

### ENTRY REQUIREMENTS

Standard Foundation Level entry requirements

## PERFORMING ARTS

### BTEC LEVEL 2 CERTIFICATE IN PERFORMING AND

### PRODUCTION ARTS INDUSTRY SKILLS

This exciting and practical course will enable you to develop creative and technical performance skills, and promotes professionalism and artistry in the performing arts. You will gain knowledge and receive feedback whilst being encouraged to develop your creativity and independent study skills. The course is accessible to anyone with a genuine interest in the performing arts.

### ENTRY REQUIREMENTS

Standard Foundation Level course requirements. Previous experience of drama or performing arts are a requirement to be able to do this course.



PERFORMING ARTS

## PROTECTIVE SERVICES

### BTEC LEVEL 2 AWARD

Interested in a career in the Uniformed Protective Services? Study a range of organisations e.g. Police, Fire and Rescue, Ambulance, Army, Navy and others you may not have thought about. The course focuses on learning a wide range of skills important for Protective Service work including communication, teamwork, fitness and health, discipline and problem solving.

One unit is assessed in an exam. The other three are coursework using a range of reports, presentations, practical tasks and role plays. The course combines theory with active practical situations to give you experience and an insight into the work of the uniformed services with visits to and speakers from different organisations.

This course will enable you to market yourself well to employers or to continue onto a Level 3 Protective Services course.

### ENTRY REQUIREMENTS

Standard Foundation Level entry requirements



## SPORT

### BTEC LEVEL 2 AWARD

If you are passionate about sport, physical activity, health or fitness then this is the subject for you.

We offer a broad range of courses encompassing areas of study from sport science, psychology and social issues, to sports coaching, leadership and fitness.

This qualification comprises part of the Foundation Level study programme and includes study of a range of topics from health and fitness, sports leadership, fitness training and practical sport. You will study:

- Fitness for Sport and Exercise
- Practical Sport
- Training for Fitness
- Leadership in Sport

This course runs for one year and works as a pathway onto a Level 3 programme. Students can re-sit their Maths, if necessary, alongside this programme.

### ENTRY REQUIREMENTS

Standard Foundation Level entry requirements





## CARBON LITERACY QUALIFICATION (CLQ)

Climate change is widely recognised as one of the greatest, and most urgent, challenges facing humankind. This challenge has been recognised not only locally but also nationally and globally.

An awareness of the carbon costs and the impact of everyday activities with a drive to reduce emissions is vitally important in tackling climate change. Without such education, the climate crisis will become steadily worse. Becoming carbon literate means not only understanding how we can reduce our greenhouse gas emissions now but also becoming better prepared for the anticipated events and putting in place methods to both mitigate and adapt to the worst eventualities.

The CLQ is a nationally recognised, self-study, short course (approx. 10 hours) designed in partnership with the Manchester Metropolitan University, which you can choose to study during your own time.

This course will give you an overview of the basic science of climate change as well as an understanding of the actions required by governments, businesses and individuals in order to avoid the worst impacts of climate change and set us on a path towards a more sustainable future. It will also cover how we can limit the damaging effects of human activity by examining examples of green initiatives and sustainability projects that mitigate, redress or reverse some of the worst effects of climate change witnessed in the past few decades.

Achieving this CLQ qualification will not only leave you better informed and more equipped to tackle

climate change, but it will also look impressive on your CV.

The course will require you to think about your own actions and how you can offset your own and collective carbon footprints. The course is intended to provide a vision for future generations of young people who can be well informed and engaged with the issue so that you can consider effective long-term solutions to the current climate change predicament.

You will:

- Gain an overview of the basic science of climate change.
- Understand the actions required of the Government, organisations and individuals to tackle climate change
- Improve your prospect for 'green jobs' either in the renewal energy industry or those that require you to have a basic knowledge about carbon footprints, environmental pollution or sustainability
- Achieve a Level 3 qualification which will leave you better informed and look impressive on your CV or university personal statement.

There are six modules in this Level 3 qualification:

Module 1: Climate Change Basics

Module 2: Exploring Carbon Footprints

Module 3: A Zero Carbon World

Module 4: Influencing Others

Module 5: Our Professional Influence

Module 6: Taking Action

We offer this qualification to all Year 1 students to complete as part of their Planned Study time.



## ESOL

### (ENGLISH FOR SPEAKERS OF OTHER LANGUAGES)

If you are studying GCSE or Advanced Level courses and it is identified that you will need to improve your level of English, we will offer you the opportunity to participate in our daytime ESOL adult provision classes. In these classes you will join a multinational group to work on the skills you need in order to be successful in your studies. You will take part in different activities including discussions, group work, presentations and conversation.

The course is designed to improve your reading, writing, listening and speaking skills and you will broaden and enrich your vocabulary and understanding of English grammar to prepare you for the ESOL qualification at the level which is appropriate for you. The topics included will be relevant for life in the UK, both within the education system and life in general.

#### ENTRY REQUIREMENTS

You should have at least an intermediate level of English to join. At the beginning of the course, you will complete a diagnostic test which will enable us to provide you with a programme of study most suitable for your level of English.



## EXTENDED PROJECT QUALIFICATION (EPQ)

### (YEAR 2 ONLY)

The Extended Project Qualification (EPQ) provides an excellent opportunity to independently research and write a dissertation on a topic of your choice. Throughout the project you will keep a log to plan and review your work. At the end of the project you will deliver a presentation. Your teacher will advise and mentor you, as well as help you develop your skills in organisation, research, presentation and reflection.

- You can pursue your topic interest in depth, perhaps in an area related to your higher education direction.
- The EPQ is graded A\*-E and is worth the equivalent of half an A Level (up to 28 UCAS points).
- Some universities will give lower offers to students taking the EPQ; others will provide additional funding.
- Employers see the EPQ as evidence of maturity and the ability to self-manage.

"The EPQ was the highlight of my time at Varndean. I valued the opportunity to research and produce a university-style essay on a topic I wanted. This enhanced my essay writing skills and helped with the transition from college to university. The EPQ was the perfect course for me to learn these skills thanks to the support of the EPQ staff. The one-to-one sessions helped me organise my research and I really appreciated the level of personal support provided." **Milo Wheeler, former student, now studying Geography at the University of Manchester.**

BEYOND YOUR LESSONS

# VARNDEAN VALUES ENRICHMENT PROGRAMME

Enrichment is at the heart of the community at Varndean College. It is an essential part of the teaching and learning journey for all students and an overall contributor to your experience at College.

Enrichment plays an essential role in allowing you the opportunity to develop transferable skills, access learning beyond the curriculum and contribute to the College community. In addition, enrichment provides you with the opportunity to build social links outside of the classroom and a platform to enjoyable and supported activities.

When you enrol at Varndean College, you will select an enrichment which will be added to your timetable. You are welcome to choose an enrichment that supports your subject choices or try something completely different, the choice is yours! Some of the enrichment courses have a qualification attached and allow you the opportunity to access this alongside your studies. Other enrichments are focused on development outside of structured lessons / assessment aims. Whichever you choose will be a compulsory part of your timetable as it will not only benefit you during your time at College, but also be a valuable asset ahead of interviews, university applications and progression opportunities.

The Enrichment programme at Varndean College is called 'Varndean Values - Enrichment'. 'Varndean Values - Enrichment' offers a bespoke extra-curricular experience for every student. Enrichments are categorised via the following headings to help you focus on your individual pathway.

Along with the above selection of enrichments students can launch their own societies and groups. All students are invited to set up their own enrichment after October Half Term. Students who are interested in this write a proposal and submit this for authorisation. Student Enrichment Leads to develop organisation, communication and leadership skills.

VARNDEAN ACTIVE

VARNDEAN COMMUNITY

VARNDEAN CREATIVE

VARNDEAN PERSONAL DEVELOPMENT

VARNDEAN PROGRESS



The overall enrichment programme adjusts annually to reflect student interests and therefore some of the enrichments offered below may be subject to change. Some of our typical enrichment courses are featured opposite.





### VARNDEAN ACTIVE

- Basketball
- Duke of Edinburgh
- Gym
- Football
- Netball
- Rugby
- Sport Social
- Sport Leagues
- Yoga



### VARNDEAN CREATIVE

- Building Creative Careers
- Ceramics
- Crochet
- Creative Writing
- Digital Illustration
- Drama Society
- Funk Band
- Introduction to DJing
- Introduction to 3D Modeling
- Stage Production Workshop



### VARNDEAN PROGRESS

- ASPIRE - Oxbridge Support
- Art - Visualising Your Future
- Dance Audition Toolkit
- Employability Skills
- Engineering: Design & Build
- Maths Club
- Medicine / Veterinary Science / Dentistry Support



### VARNDEAN COMMUNITY

- Board Games Club
- Carbon Literacy Qualification
- Citizens UK
- Climate & Environment Action Group
- Ethnicity & Identity Discussion Group
- Law Society
- Philosophy Society
- Politics Society
- Pride (LGBTQ+ Group)
- Student Union
- Videogame Club



### VARNDEAN PERSONAL DEVELOPMENT

- Journaling For Calm
- Meditation
- Peer & Academic Mentors
- Reading Challenge
- PAUSE For New Possibility
- Your Wellbeing Matters
- Youth Enterprise Scheme



RECOGNISED BY OFSTED  
AS OUTSTANDING



## BEYOND YOUR LESSONS

# VARNDEAN FOOTBALL ACADEMY

From September 2024, as part of its enrichment programme, the College will be running its own new Varndean Football Academy programme. This programme will provide high quality football coaching, with timetabled training sessions and match fixtures. Successful students will have two scheduled training sessions incorporated into their timetable, alongside Wednesday afternoon fixtures for both 1st and 2nd team squads. All Sports Academy students will also be able to access the College Fitness Suite outside of their curriculum timetable throughout the week.

# DUKE OF EDINBURGH AT VARNDEAN

At Varndean College, we are proud to offer the DofE Gold Award to students. No matter whether you are a complete novice or have already completed Bronze and Silver, we welcome all students keen to complete the requisite period of engagement in the different sections (Skills, Volunteering, Physical and Residential) as well as providing training and supervision for the expedition section of the Award.

We run the practice element of the expedition in the Brecon Beacons, usually at the end of March, with the assessed portion in Dartmoor at the end of May. Participants receive tailor-made training during their enrichment lessons by a qualified and experienced tutor, who organises and supervises all elements of the expedition. Along with expert training, participants are provided with kits (tents, cooking stove, emergency equipment) to help them complete their expedition. Whilst they are required to provide their own personal kit, there are also financial options available as well as personal kit for hire.



Assistance and mentoring is also available for participants as they progress through the other sections of the Award and students can choose a separate enrichment activity that will directly count towards their skill, physical or volunteering sections.

## BEYOND YOUR LESSONS

# VARNDEAN COLLEGE STUDENT UNION LEADERSHIP

### MAKING YOUR VOICE HEARD ...

**The Varndean College Student Union Leadership team represents students' views and ideas in order to be an effective and legitimate voice of the student body at Varndean College, putting forward any suggestions that students would like to see implemented. The team of officers meets regularly and gets involved in ...**

- Student-led events at College
- Student Council
- Wellbeing and Welfare
- Campaigns and charities
- Environmental issues
- Enrichment
- Working with Citizens UK Alliance and their national campaigns
- Working collaborative with College teams and Senior Leadership
- Freshers' Fair
- New Students' Day and Induction
- Leavers' Event
- Basically, anything related to students and college life!

### JOINING THE SU LEADERSHIP TEAM.

Students have the opportunity to represent their peers and help bring about any changes they would like to see. The SU Leadership ensures that the College maintains its strong student voice. It teaches students many transferable skills, such as democracy, communication and teamwork, and is valuable life experience to gain and include on a CV, UCAS personal statement, or a job application.

All students are members of the Student Alliance when enrolled at Varndean College and everyone is welcomed and encouraged to participate in the annual student elections. This is not only to gain the position of a Student Union Officer, but also because participating in the campaign is an enriching experience and fun!

You can follow the Student Union on Instagram [@varndean\\_su](https://www.instagram.com/varndean_su)



# HERE TO HELP YOU

Moving on to college is an exciting but sometimes challenging time. At Varndean College, we have an experienced team of staff to help you manage this change and guide you through your journey whilst at college.



## HEALTH & WELLBEING SERVICE

The Health & Well-being Service will help direct you to the most appropriate support, including:

- 'Our Well-being Matters' offers a calm, quiet room at ALL times - a place to P.A.U.S.E. Through a variety of well-being strategies, learning can be enhanced, anxious thoughts alleviated and a student's ability to build more resilience boosted. They can offer, check-in, drop-in, or 1:1 support. Students can refer themselves by emailing [wellbeingzone@varndean.ac.uk](mailto:wellbeingzone@varndean.ac.uk).
- Wellbeing Enrichment Groups offered include: PAUSE for Possibility, Wellbeing for Academic Study and Exam Destress, Developing Emotional Confidence and Practicing Assertive Communication. We also offer a medical profile for those students with a medical condition.
- Therapy Team - Our Therapy team consists of qualified therapists offering short term counselling and therapeutic work. The team's Mental Health Practitioner can also liaise with external agencies such as CAMHS to help support students. The Therapy Team also offer check-ins for students on the counselling waiting list or those who may need non-counselling support. All the team are experienced at working with students in

confidential 1:1 sessions. We even have a therapy dog, Wilfred, who can befriend students during check-ins too!

- Peer Mentoring/Study Skills Mentoring - Mentors are students who have been trained to provide one-to-one support to other students. Students who may be feeling overwhelmed, lonely or would just like to talk to other students can request to meet a Peer Mentor. Students who need support with their studies can request a Study Skills Mentor to support them with their learning. Mentors have been trained in listening skills and can provide information about where students can access further support.
- Mental Health Champions - These are students who take part in the Mental Health Champions project with the YMCA Right Here and Brighton & Hove City Council. The project is student led action and students aim to develop bespoke anti-stigma mental health campaigns to promote positive mental health at college.

If necessary, our Well-being Coordinator can also direct you to other specialist support services which are available both inside and outside of college.



### PERSONAL TUTORS & PERSONAL DEVELOPMENT PROGRAMME

At Varndean College, you will have a Personal Tutor to guide and support you throughout your journey here. Tutorial sessions happen on a regular basis including group sessions, individual 1:1s and allocated independent personal development time. It is a compulsory and essential part of your studies and is designed to help you develop as a person, student and a citizen. The programme is focused on five parts (study, society, self, success and safety) and has been created to help you make the most of your time at college and ensure you are equipped for life after college.

Your Personal Tutor will monitor your progress holistically and ensure you are aware of opportunities within college and in the community. Your Personal Tutor can signpost you to further support and ensure you have every opportunity to meet your academic potential.

The Tutorial Curriculum includes visits from external speakers, trips and opportunities to engage with additional courses which provide qualifications (such as the Climate Literacy Qualification and Extended Project Qualification) to help you develop skills, gain knowledge and experience.

In your first year, your Tutor will support you in the transition from school to college and help you to fully integrate into the Varndean College Community. Your Tutor will support your progress throughout your journey and advise you on support for your progression plans to ensure you are able to access your chosen destination.

### WELFARE SERVICE

The Welfare Service, based in the tutorial block and our safeguarding office, offers a supportive information service to help you with finance, health, housing, travel and any other practical issues that could affect your study. If necessary, our Welfare Officer can also direct you to other specialist support services which are available both inside and outside of college. We run regular canteen Welfare Pop-up sessions with local support services offering information and raising awareness of their support, including Sussex Police, Brighton Youth team, Sexual Health and Drug Awareness Teams.

More information on our Welfare services can be found on our website [www.varndean.ac.uk/welfare/](http://www.varndean.ac.uk/welfare/)



## ADDITIONAL SUPPORT

Please let us know on your application form if you have Additional Needs. We will then work with you to create an individual support plan. We provide a range of support that is tailored to suit the needs of the individual student and provides a quiet and friendly atmosphere for students to work in.

Varndean College is committed to inclusive education and seeks to ensure that every student is given the opportunity to achieve their potential. The Additional Support team works with subject teachers to ensure that the individual learning needs of all students are identified and met. Support for students with Special Educational Needs/Disability (SEND) includes support for students with additional needs, such as Dyslexia, Dyspraxia, Autism, ADHD/ADD, physical and sensory needs and other neuro-diverse and mental health needs. Our goal is to support students to become as independent as possible and give them the tools they need to succeed at college and in life.

### SUPPORTED STUDY SESSIONS

The aim of Supported Study Sessions is to enhance independent learning and develop study skills. Students can bring their coursework and work independently with access to a support tutor. Support can include help with essay writing, effective note-taking, study skills and organisational skills. The sessions are small, with a maximum of ten students and are available every day in the Additional Support Department.

### EXAM ARRANGEMENTS

Students with significant and persistent learning needs who need access arrangements in exams should disclose their need on their application form. Where appropriate, and subject to the timely disclosure of need, they will be invited to an assessment session in the Additional Support Department in good time for their exams. Students will be allocated access arrangements in line with current JCQ regulations and guidance.

### EHCPs

In-class support and 1:1 support sessions are sometimes provided to students who have EHCPs. This support will be fully discussed, agreed and reviewed with students on an individual basis. Local Authority Consultation is undertaken to plan support for students with Education, Health and Care Plans (EHCPs).



**RECOGNISED BY OFSTED AS OUTSTANDING.**

**“STUDENTS VALUE DEEPLY THE EXTENSIVE SUPPORT AND CARE STAFF PROVIDE FOR THEIR MENTAL HEALTH AND WELL-BEING.” OFSTED 2024**



# CAREERS AND PROGRESSION

“STUDENTS DEVELOP VALUABLE EMPLOYABILITY SKILLS IN WORK EXPERIENCE AND THROUGH THE COURSES THEY UNDERTAKE” OFSTED 2024

**Vardean College prides itself in its excellent progression rate and offers extensive support to students by an experienced, professional team who work in accordance with the DfE Guidance for Further Education and Sixth Form Colleges and using the 8 Gatsby Benchmarks to develop our careers progression.**

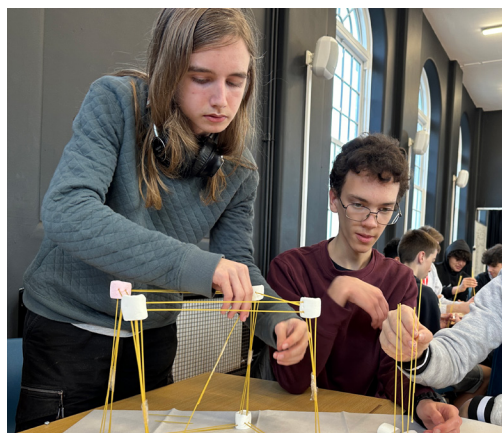
Throughout their time at Vardean, students will receive careers related support which is delivered through their weekly tutorial sessions. All students are also able to book an appointment to see a Level 6 qualified Careers Adviser for 1:1 help. Information, advice and guidance is given to help students make choices about their next steps whether that be applying for an apprenticeship, university or planning a structured ‘gap year’. Materials are updated annually and students are able to provide feedback to ensure the Careers team are meeting their needs.

The Careers Department also provides support to students, parents, staff and employers who choose to partner with the college by supporting our curriculum areas with employer-led activities. Through the ‘Careers Spotlight’ programme, all curriculum areas invite employers in to talk to students about their field of work and provide information on what it is like to be employed in that occupational sector. This is then directly linked to the subjects the students are studying, helping them see the relevance of what they are studying to the workplace and helps them identify the transferable skills their subject provides them. Speakers have included a liver transplant specialist, fashion designer, oncologist nurse, a play therapist, marine engineer, book publisher, tv production company, Bank of England economist, games developer, Sussex Police and The Army.

Throughout the year, the Careers team organise a diverse range of events for students, including the annual Apprenticeship Fair, UCAS Fair, Personal Statement Writing Day, the Vardean Internship Programme (VIP) and the HE Information Day, held at the University of Sussex.

The team also provide help and guidance to students at results days in August and through the UCAS clearing process if needed.

In its 2024 Ofsted inspection, Vardean College received accolades for its excellent student outcomes, with Ofsted recognising the college’s success in helping students achieve strong academic results and progress to higher education or employment.





## STUDENT PROGRESSION

- We are in the top 10% of UK schools and sixth form colleges for 'value added', which means students achieve higher grades than were predicted based on the GCSE results they came to us with. In 2023 our A level students achieved higher levels of academic improvement than students in 90% of other UK schools and colleges.
- Our students go on to study at a wide range of top UK universities, including Oxford and Cambridge, Birmingham, Bristol, Durham, Exeter, Imperial College, King's College London, Leeds, Manchester, Nottingham, Sheffield, UCL, Warwick and York.
- Recent HESA (Higher Education Statistics Agency) statistics show that in 2022, 94.8% of our students studying at Russell Group universities graduated with a First or Upper Second-Class honours degree, higher than those students from the independent sector.
- Many of our students choose to move straight into an apprenticeship or employment.

## OUR AWARD-WINNING CAREERS TEAM

In 2023, the Careers Team were awarded 'Careers Champions 2023' by The Careers and Enterprise Company for making the most significant contribution to developing links between education and the workplace, and for developing creative methods to enable skills development in young people and meeting the needs of the Local Skills Improvement Plan.



RECOGNISED BY OFSTED  
AS OUTSTANDING

# WHERE ARE THEY NOW?

Take a look at where some of our past students are now and the interesting and diverse career paths they are following.

## MAGDALENA LECH

Magdalena studied the International Baccalaureate Diploma and went on to study a Bachelors in Medicine and Surgery at the University of Southampton, during which time she carried out clinical placements at the University of Nebraska Medical Centre in the US.



In 2021, she successfully completed her dissertation in anaesthetics and critical care entitled 'Perioperative Anaemia Management in Elective Orthopaedic Patients in University Hospital Southampton in 2018 and 2019'. Her work achieved an equivalent grade of a First.

From Sept 2021 – May 2022, Magdalena achieved a First in her Intercollegiate BSc in Pharmacology from King's College London. Her dissertation focused on 'The impact of mitotane therapy on serum free proteins in patients with adrenocortical carcinoma' which has since been published in 'Endocrine Connections'.

Magdalena returned to Vardean earlier this year to assist students with their medical entrance interviews and more recently to deliver a clinical skills session on cranial nerve examination. The session proved informative and valuable in helping potential candidates hone their skills in how to examine patients as well as crucial anatomy and physiology of the cranial nerves.

Magdalena says: "I am enthusiastic about giving back to the community that had contributed to my journey into medical school and now looking forward to initiating a new chapter in my life as a qualified doctor from August 2024 at University Hospitals Sussex NHS Foundation Trust."

### FORMER SCHOOL:

Bedes

### STUDIED:

International Baccalaureate Diploma (2016-18)

### PROGRESSION

Medicine & Surgery, University of Southampton (2018-24)

## BILLIE JO BECKER

Billie-Jo is currently working as a journalist for ITV News based in Jersey, Channel Islands. Previously she worked with ITV News Meridian covering the South and South East of England. She is responsible for a combination of producing, news research, planning and digital.

Billie-Jo says: "Vardean College was fantastic and I developed lots of skills throughout my time there which help me in my job now. I particularly enjoyed Sociology as we touched on lots of important topics. These now help me to fulfil my role as a journalist when I am covering human interest stories."

### FORMER SCHOOL:

Patcham High

### STUDIED:

English Language, English Literature, Sociology (2015-17)

### PROGRESSION

BA Politics & International Relations, University of Kent (2018-21)

MA Broadcast Journalism, City University of London (2022-23)





## BARNEY RUDKINS-STOW

Barney chose these subjects as he originally wanted to go on to study Physics at degree level. However, after acquiring a place to study Physics with Astronomy at university, he realised that the course and university life was not for him so he left and spent the next year working. He then applied to the British and Irish Modern Music Institute (BIMM) in Brighton to study a BA in Music Production and is now pursuing a career in the music industry. He has had multiple tracks signed to major publishers (BMG) and was nominated for Best Folk Production Music Track at the 2023 Production Music Awards.



Barney says: "I have such fond memories of my time at Vardean College. My tutors were so genuine and supportive and I felt I was doing them proud with every step of the progress I made. There was so much support available and I'm glad I made good use of it. To students choosing their courses, it's a good idea to pick courses that will provide opportunities relevant to you, but it's more important that you'll actually enjoy studying those courses. Don't be afraid of making mistakes or asking for help - sometimes you have to fail to realise how good it feels to succeed."

### FORMER SCHOOL:

Vardean School

### STUDIED:

Maths, Further Maths, Physics, AS Philosophy (2015-17)

### PROGRESSION

BA Music Production, BIMM (2019-22)

## DANIEL COX

Daniel attended the University of Bath, completing a placement year at University of Iowa at the Carver College of Medicine within the Department of Biophysics and Molecular Physiology. Finishing university with a first-class degree, he began working as a Life Science Research Consultant for Carmichael Fisher Executive Search and The RSA Group. He then returned to his studies undertaking a PhD at King's College London whilst working for the pharmaceutical company GSK. At GSK he works in the Vector Process Development team as part of the Cell & Gene therapy group. He also worked with the NHS dealing with Covid vaccines and helped in longitudinal studies. He is due to complete his PhD in 2024.



Daniel says: "I loved my time spent at Vardean College and it 100% set me up for my goals in life. I fondly remember all the teachers who helped me get this far. Special shout out to Chemistry tutor, John Luton, who I sometimes come back and see. The teachers helped me thrive and be my best."

### FORMER SCHOOL:

Dorothy Stringer

### STUDIED:

Biology, Chemistry, Maths + EPQ (2013-15)

### PROGRESSION

BSc Biochemistry, University of Bath (2015-19) (2022-23)

## OLIVE CARR

Olive gained a First in her degree in Animal Behaviour and Welfare. She won the award for top dissertation at her university with her work on captive Dalmatian pelican behaviour. She now works as an Animal Care Assistant at a Sussex rescue centre, and has spent three months working at a rhino conservation reserve in South Africa and spent time volunteering at a vulture sanctuary and in wildlife rescue.

Olive says: "Vardean College was a great place to study; the teachers supported me throughout and helped me build important valuable skills which I have taken with me in my career journey. I would really recommend my combination of A levels if you are interested in going into any career in the natural world/with animals, as they allowed me to build my knowledge of science through Biology and Geography, with Art complementing the creativity in my learning."

### FORMER SCHOOL:

Lewes Priory

### STUDIED:


Biology, Geography, Art (2018-20)

### PROGRESSION


BSc Animal Behaviour & Welfare, Plumpton College (2020-23) (2022-23)




# GETTING TO VARNDEAN


 Varndean College is served by the 5B bus service which stops directly outside the main entrance and operates a very frequent service. You can either take the direct 5B bus service or alternatively most other bus routes will take you into Brighton town centre where you can then change onto the 5B service from there.

## FROM HOVE/HANGLETON


 **5B** A frequent service from Hangleton, via Hove and Brighton, directly to Surrenden Road where it stops outside the College.

## FROM MILE OAK/PORTSLADE


 **1/1A** Run from Mile Oak, via Portslade to Brighton town centre where you can change onto the 5B.

 **55** Runs from Mile Oak and Hangleton to Hollingbury, stopping outside the College. However, this is a limited service, only departing Mile Oak between 6.40am – 7.17am. There is also only one return service leaving Varndean at 4.28pm to Churchill Square only.



## FROM SOUTHWICK

 **46** Runs from Southwick, via Portslade, Hove and Brighton town centre up to Ditchling Road.


## FROM KEMP TOWN AND QUEENS PARK

 **94** School bus service operating in early morning and in afternoon only between Queens Park district and Dorothy Stringer School (Loder Road). Or alternatively take a bus into Brighton town centre and change.

## FROM NEWHAVEN/SEAFORD

 **12**  **12A** Runs via Peacehaven, Saltdean and Rottingdean into central Brighton. You can then change onto the 5B bus from there.

## FROM FURTHER AFIELD

 For those students who travel from further afield, the journey is easily manageable due to the wide range of connecting bus services or rail services available.

The closest train station to the College is Preston Park Station, which is approximately a 15-minute walk away. Various services stop at this station, some of which are direct services.

## FROM THE WEST

From Worthing, there is an hourly direct service to Preston Park via Lancing, Shoreham, Portslade and Hove with the journey time from Worthing taking only 20 minutes. There are also many additional services via changing at Brighton Station.

## FROM THE NORTH

From Haywards Heath, there are direct trains calling at Wivelsfield, Burgess Hill and Hassocks. The journey time from Haywards Heath is approximately 16 minutes.

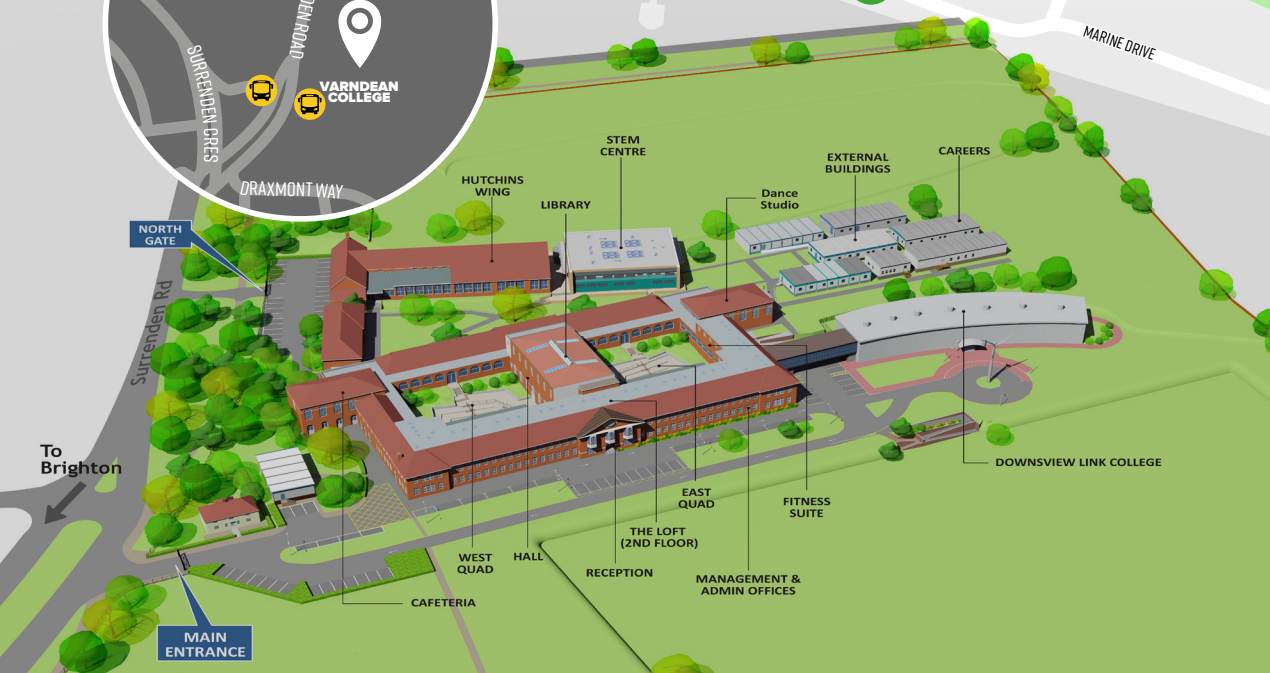
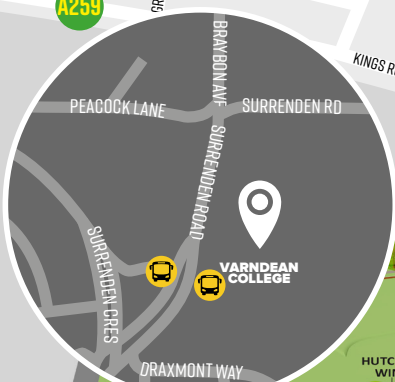
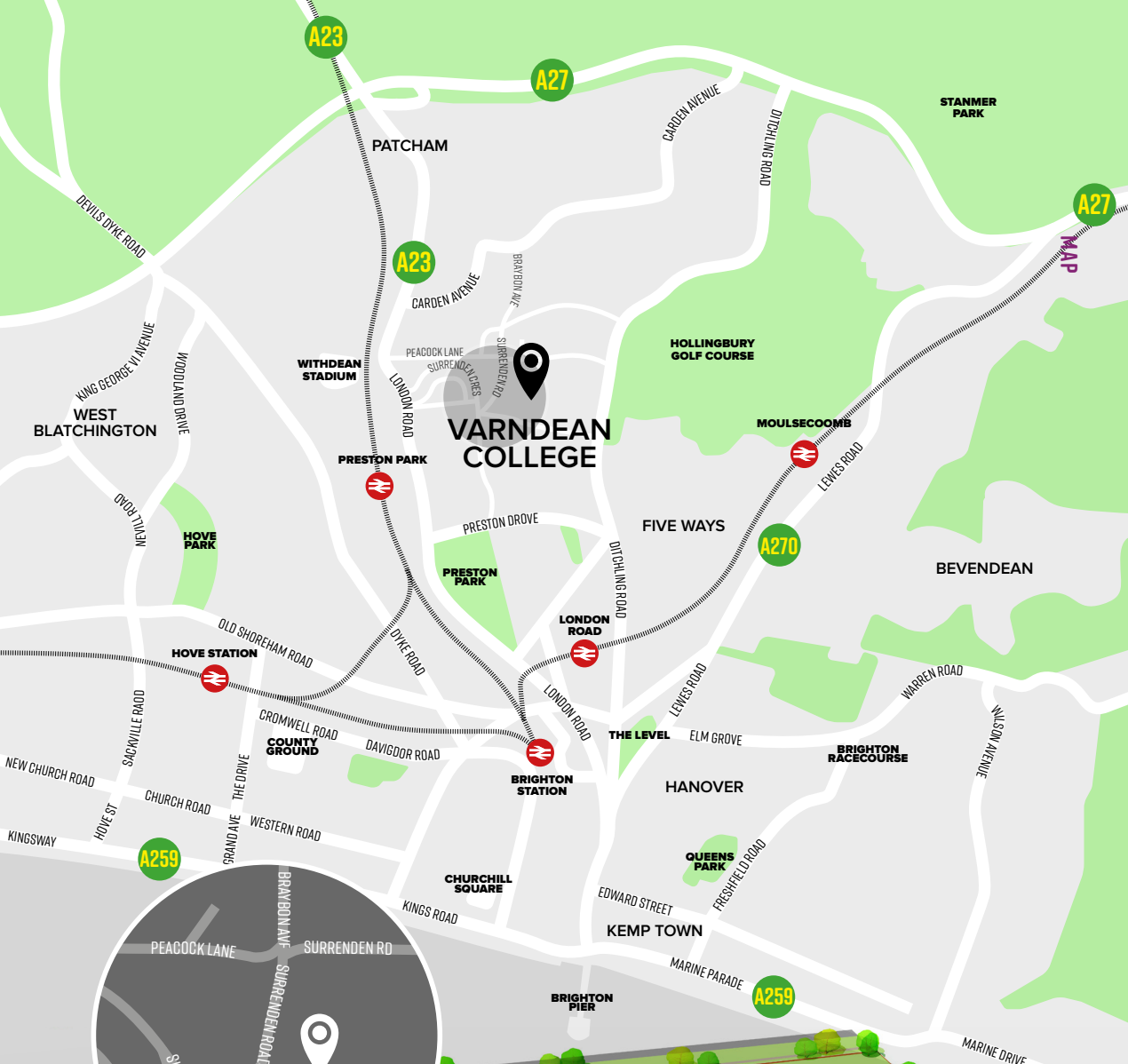
## FROM THE EAST

From Lewes, trains into Brighton stop at London Road station. London Road station is close to bus services to the college, or a 20-minute walk should you prefer.

## PLEASE CHECK THE FOLLOWING TRAVEL WEBSITES FOR EXACT TIMES AND LATEST INFORMATION:

[www.buses.co.uk](http://www.buses.co.uk)  
[www.nationalrail.co.uk](http://www.nationalrail.co.uk)  
[www.southernrailway.com](http://www.southernrailway.com)  
[www.thameslinkrailway.com](http://www.thameslinkrailway.com)





- STEM CENTRE
- EXTERNAL BUILDINGS
- CAREERS
- Dance Studio
- HUTCHINS WING
- LIBRARY
- DOWNSVIEW LINK COLLEGE
- EAST QUAD
- FITNESS SUITE
- THE LOFT (2ND FLOOR)
- RECEPTION
- MANAGEMENT & ADMIN OFFICES
- HALL
- WEST QUAD
- CAFETERIA
- NORTH GATE
- MAIN ENTRANCE



# INDEX

3D Design	21
Additional Support	68
Alumni	72-73
Application Process	9
Art (Fine Art)	21
Art (GCSE)	58
Aspire Programme	12
Biology	23
Biology (Applied Human Biology)	23
Business Studies	24
Business (Foundation Level)	60
Carbon Literacy Qualification	62
Careers and Progression	70-71
Caring for Children (Foundation Level)	60
Chemistry	26
Classical Civilisation	26
Computer Games Development	27
Computer Science	27
Criminology	28
Dance	28
Drama & Theatre Studies	29
Duke of Edinburgh	66
Economics	29
Education & Childcare	30
Engineering	30
English (GCSE)	58
English Language	32
English Literature	32
English Language & Literature	34
Enrichment Programme	64-65
Entry Requirements	8
Environmental Science	34
ESOL	63
Extended Project Qualification	63
Film Production	35
Film Production (Foundation Level)	60
Film Studies	35
Financial Assistance	69
Forensic Science & Criminal Investigation	36
French	36
Further Maths	47
Geography	37
German	37
Graphic Design	38
Gym Instructing	55

# INDEX

Health & Social Care	38
Health & Social Care (Foundation Level)	60
History - Early Modern	39
History - Modern	39
History of Art	41
Information Technology	41
International Baccalaureate	42-45
International Students	11
Law	46
Law (Applied)	46
Maths (A Level)	47
Maths (GCSE)	59
Media Studies	47
Medicine, Veterinary Science & Dentistry	13
Music Production	48
Open Events	3
Performing Arts	48
Philosophy	49
Photography (GCSE)	59
Photography	49
Physical Education	50
Physics	50
Politics	51
Protective Services (Foundation Level)	61
Protective Services	51
Psychology	52
Psychology (Applied)	52
Science (GCSE)	59
Sociology (GCSE)	59
Sociology	53
Spanish	53
Sport (Foundation Level)	61
Sport	54
Sport & Exercise Science	54
Sports Leaders	55
STEM	14
Student Union	67
Textiles	56
Timetables	10
Travel & Tourism	56
Value Added	5, 70
Varndean Football Academy	66
Welfare	69
Well Being	68



Education  
& Child Care

TODAY!  
THE  
ATTEND



Varndean College  
Surrenden Road  
Brighton, BN1 6WQ

Tel: 01273 508011

[information@varndean.ac.uk](mailto:information@varndean.ac.uk)  
[www.varndean.ac.uk](http://www.varndean.ac.uk)

 **Varndean College**

 **@varndeancollege**

 **Varndean College**

 **@varndean**

