

## What do psychologists actually do?

Psychology as a general degree can lead to careers in business, personnel, media, teaching etc.

To become a professional psychologist, postgraduate training is required. For more information visit [www.bps.org](http://www.bps.org).

## Why do Psychology?

It is a fun and interesting subject, which students enjoy. Lessons are made up of debates, videos, simulated court cases and mini experiments. The courses are supported by a number of trips. There is also an exciting Psychology Society where students have the opportunity to listen to outside speakers, watch films with a strong psychological basis and to debate with students and staff.

Psychology is the most popular single subject in this College. There are currently 450 students enrolled on one of our Psychology courses (IB, A Level and Applied), so you will be part of a vibrant community.

Psychology is one of the most popular subjects taken at university it is also very respected by employers. It develops transferable skills, such as communication, I.T. numeracy, analysis, evaluation and application. Psychology is also one of the very few subjects seen as a bridge between the arts and the sciences - it is accepted as a required A Level for a Medicine degree, yet it also seen as a valuable subject for those doing a Performing Arts course. Consequently it will keep your future career options open.

The tutors are friendly, very supportive of individual student needs and committed to your success.

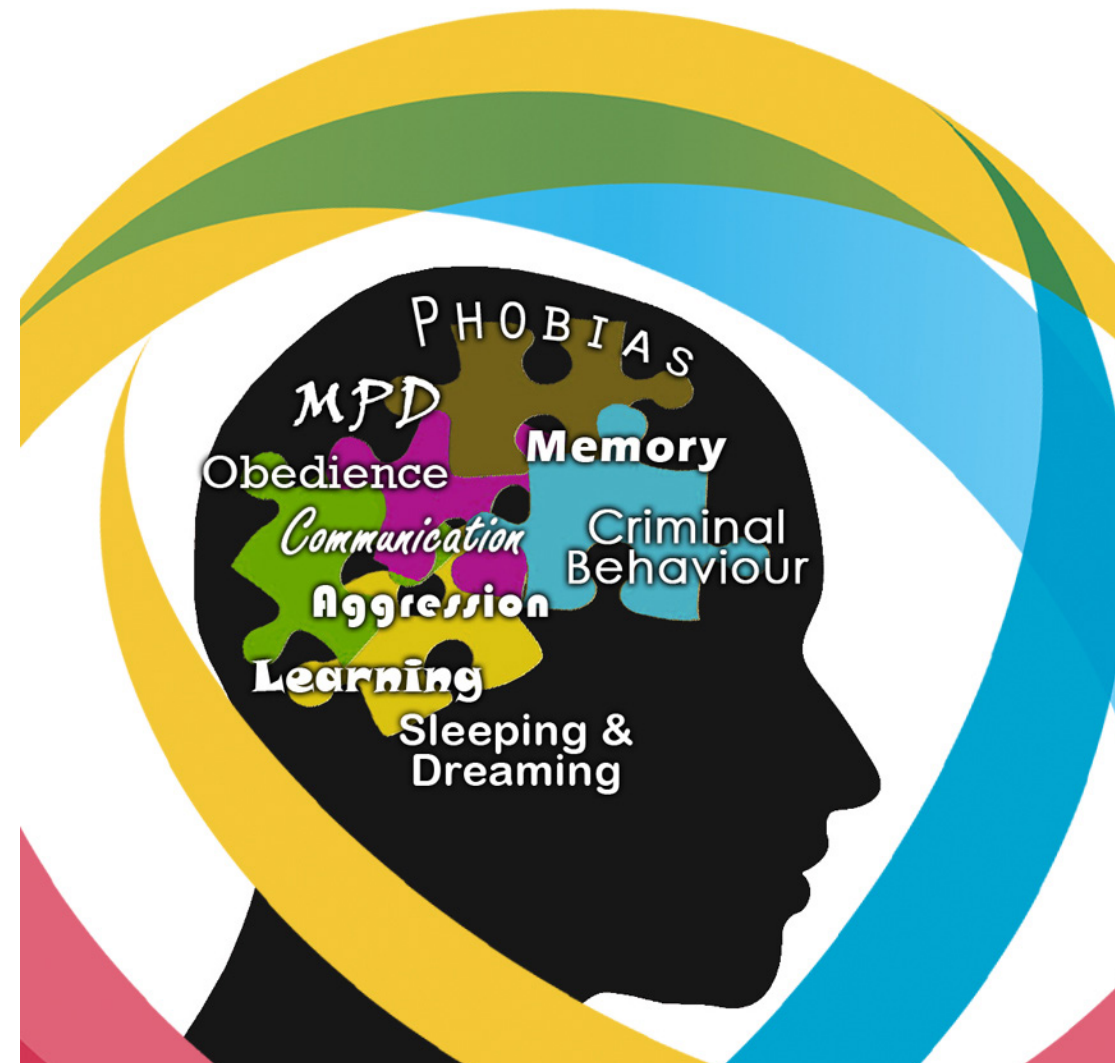
A Grade 4 or higher in both Maths, English and Science is an essential requirement for enrolling on this course.

For more information please contact:

Jasbinder Badesha  
(Programme Leader)



# A Level Psychology



The Vardean Psychology courses - A Level and Applied, will encourage you to be inspired, motivated and challenged by following a broad, coherent, practical and worthwhile course of study. The specification provides insight into, and experience of, how psychology works, stimulating curiosity and encouraging you to engage with psychology in your everyday lives, enabling you to make informed choices about further study and about career choices.

### Unit 1 Research Methods (30%)

The Unit will assess knowledge and understanding of research methods; provide an opportunity to plan, conduct, analyse and report psychological research across a range of experimental and non-experimental methodologies and techniques.

### Unit 2 Psychological themes through Core Studies (35%)

This Unit aims to develop the critical thinking and independent learning skills that are essential to the scientific study of Psychology. It introduces some of the central areas of investigation in psychology organised in key themes. Each key theme is represented by a classic and a contemporary core study.

<b>Social</b>	Responses to people in need	Responses to people in authority
<b>Cognitive</b>	Attention	Memory
<b>Developmental</b>	External influences on children's behaviour	Moral Development
<b>Biological</b>	Regions of the Brain	Brain plasticity
<b>Individual Differences</b>	Understanding disorders	Measuring Differences

### Unit 3 Applied Psychology (35%)

This unit consists of one compulsory section on issues in mental health and two applied options: Criminal psychology and Sports and exercise psychology. The question format means an active, thinking response which should be exciting and engaging rather than passive. There is also an application focus to allow assessment to take the form of a response to novel situations.

#### Issues in Mental Health

The historical context of mental health  
The medical model  
Alternatives to the medical model

#### Criminal Psychology

What makes a criminal?  
The collection and processing of forensic evidence  
Collection of evidence



#### Psychology and the courtroom

Crime prevention  
Effect of imprisonment

#### Sport and Exercise Psychology

Arousal and anxiety  
Exercise and mental health  
Motivation  
Personality  
Performing with others  
Audience effects

Students will be expected to complete 5 hours of independent study per week. This usually consists of reading, completing worksheets and past questions, writing essays, conducting and writing up practical investigations. Students will be given the opportunity to go on trips and visits (relevant cinema and theatre visits, a local zoo and conferences).

#### Mode of Assessment

100% exam which will consist of three units which are all taken at the end of the second year.

No prior knowledge of Psychology is required.